

# Envel PANEL SYSTEM PROMOTIONAL DETAILS

MANUFACTURER'S SPECIFICATION AND DETAILS SUBJECT TO CHANGE WITHOUT NOTICE



TITLE:

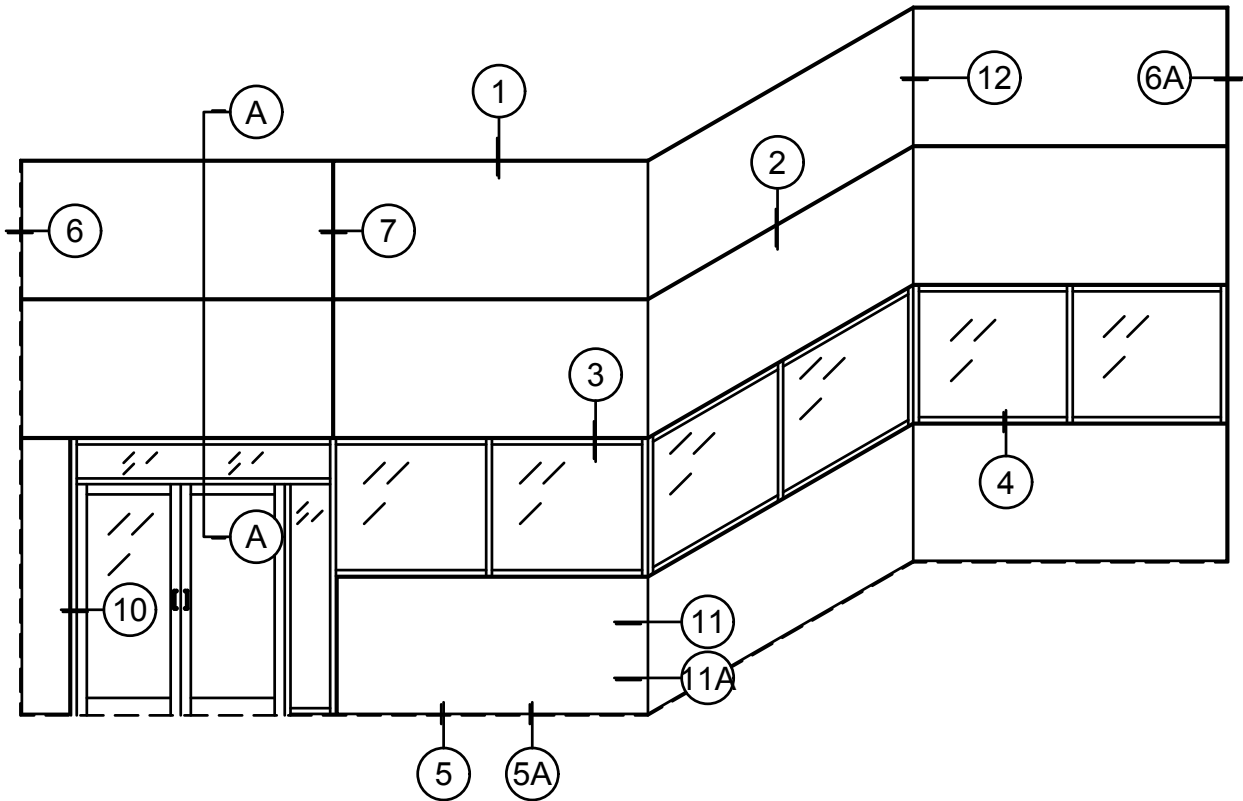
Envel PANEL SYSTEM S2

DRAWN BY:  
SS

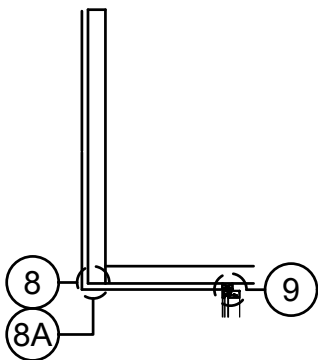
DATE:  
4/11/16

REV.

SCALE:  
FULL



## ELEVATION



SECTION A-A



TITLE:

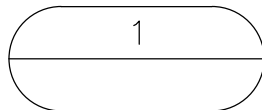
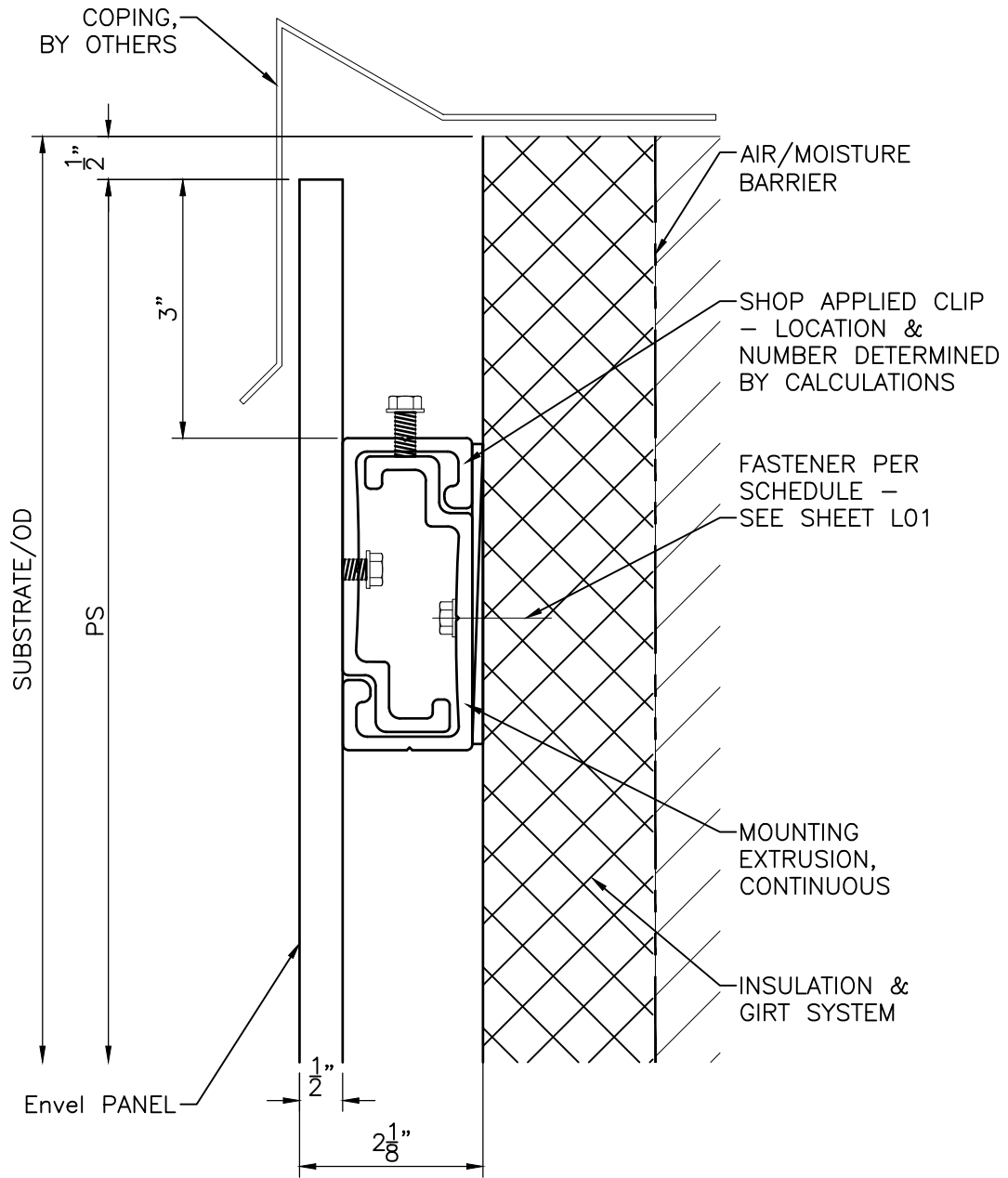
**Envel PANEL SYSTEM S2**

DRAWN BY:  
SS

DATE:  
4/11/16

REV.

SCALE:  
3/16" = 1'-0"



## TYPICAL UPPER TERMINATION



TITLE:

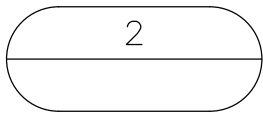
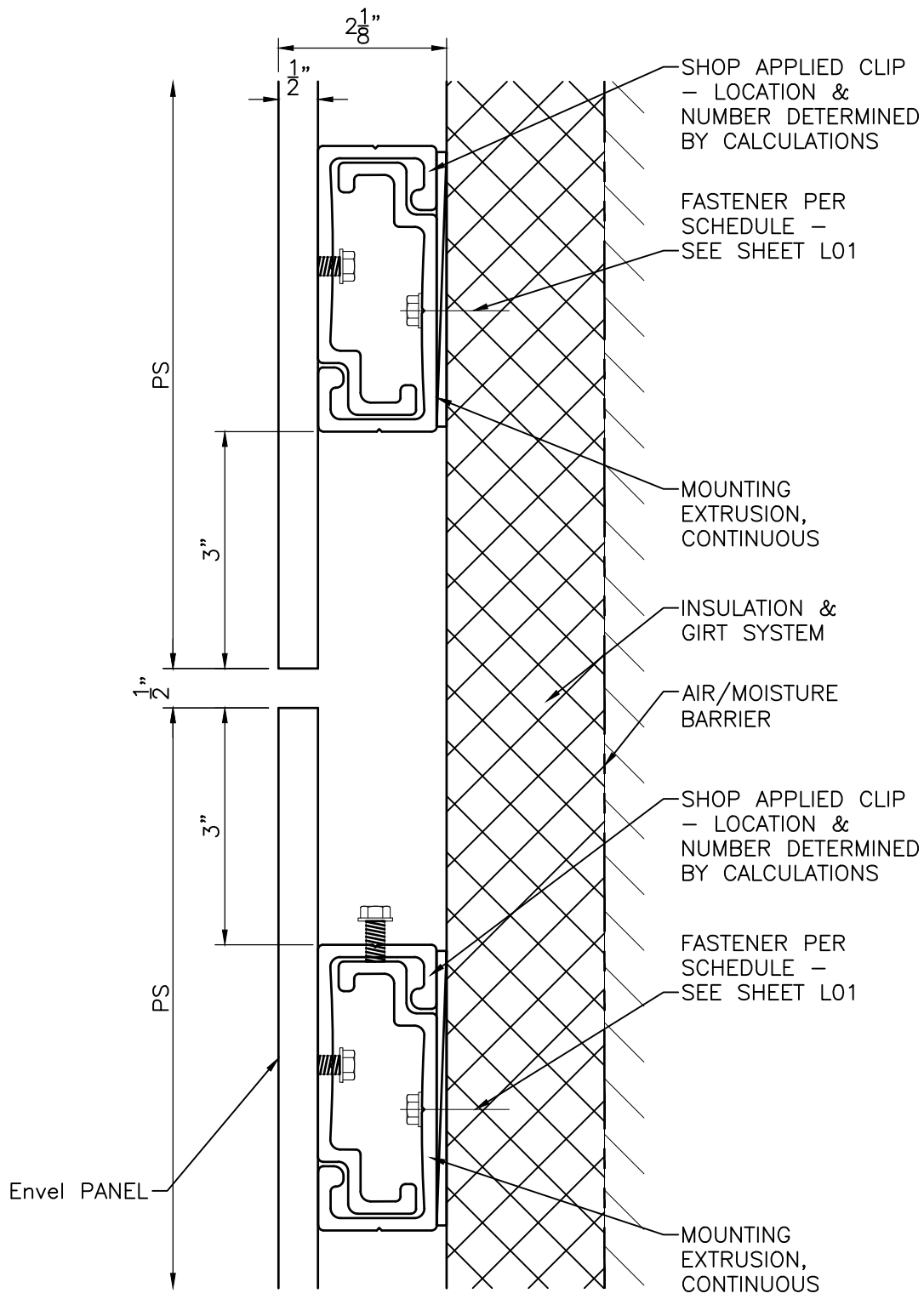
**Envel PANEL SYSTEM S2**

DRAWN BY:  
SS

DATE:  
4/11/16

REV.

SCALE:  
1:2



## TYPICAL HORIZONTAL JOINT



TITLE:

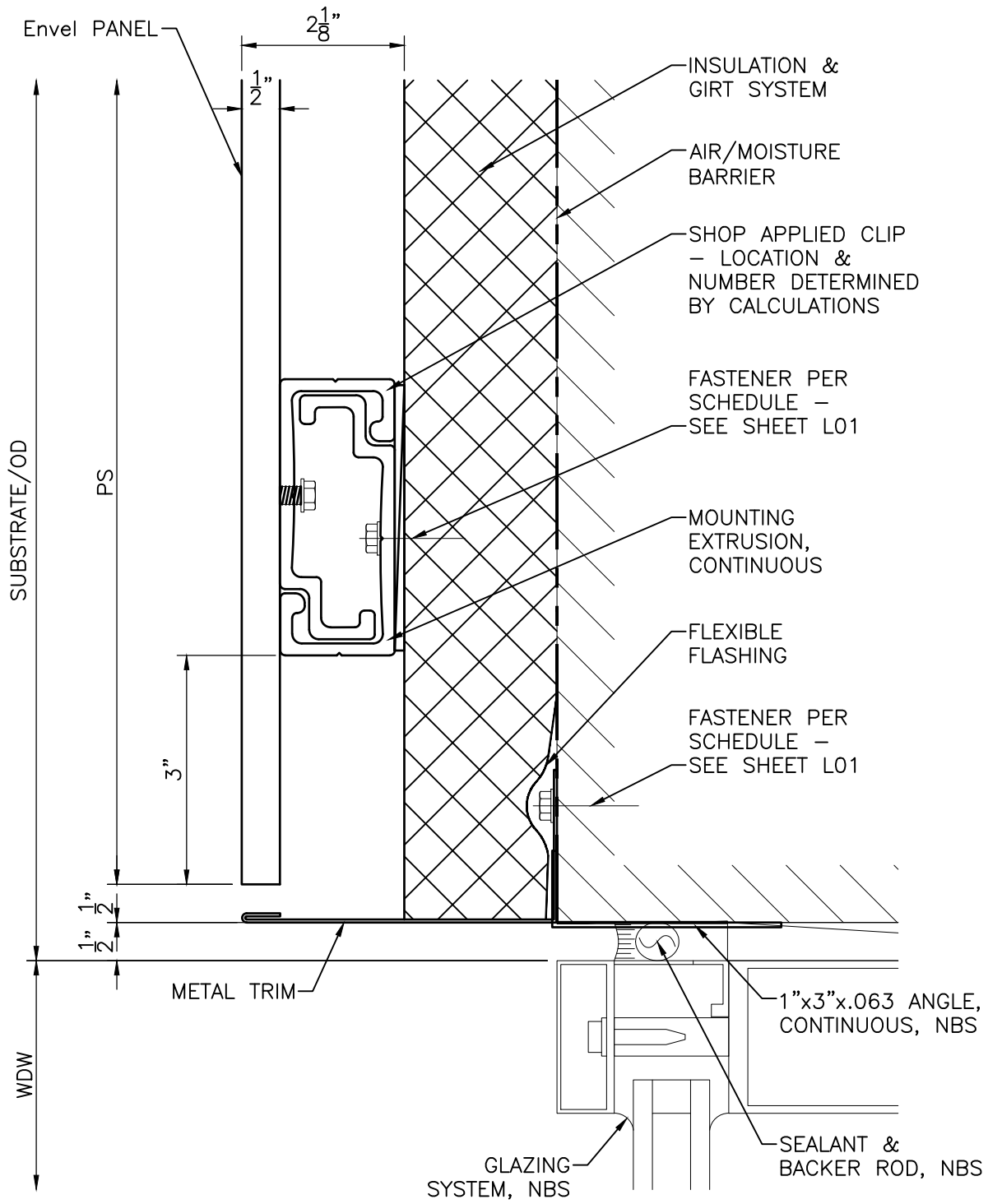
**Envel PANEL SYSTEM S2**

DRAWN BY:  
SS

DATE:  
4/11/16

REV.

SCALE:  
1:2

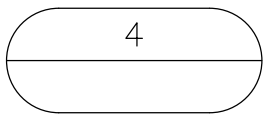
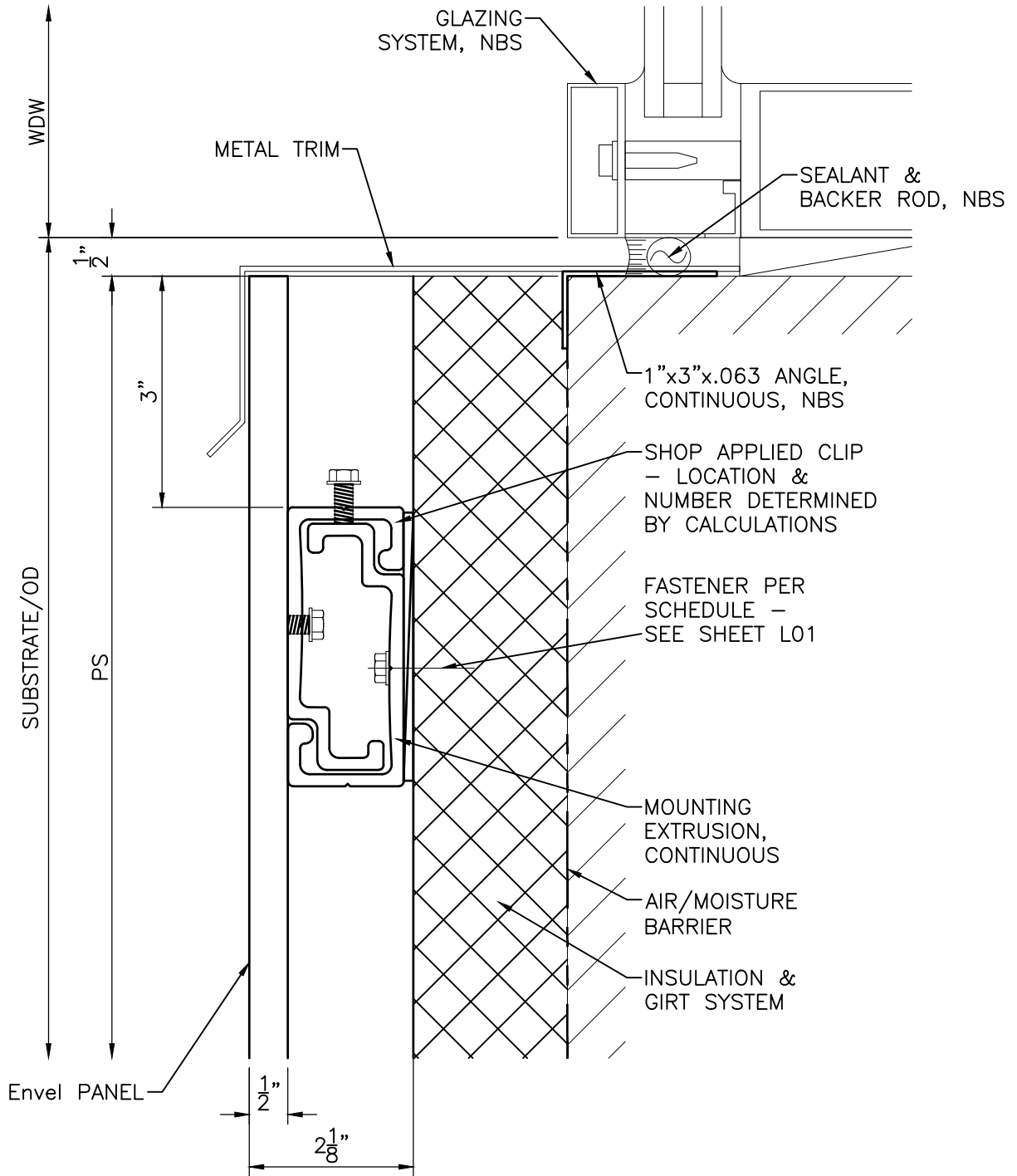


# TYPICAL GLAZING HEAD



TITLE:  
**Envel PANEL SYSTEM S2**

DRAWN BY: SS	DATE: 4/11/16	REV.	SCALE: 1:2
-----------------	------------------	------	---------------

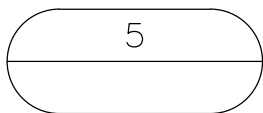
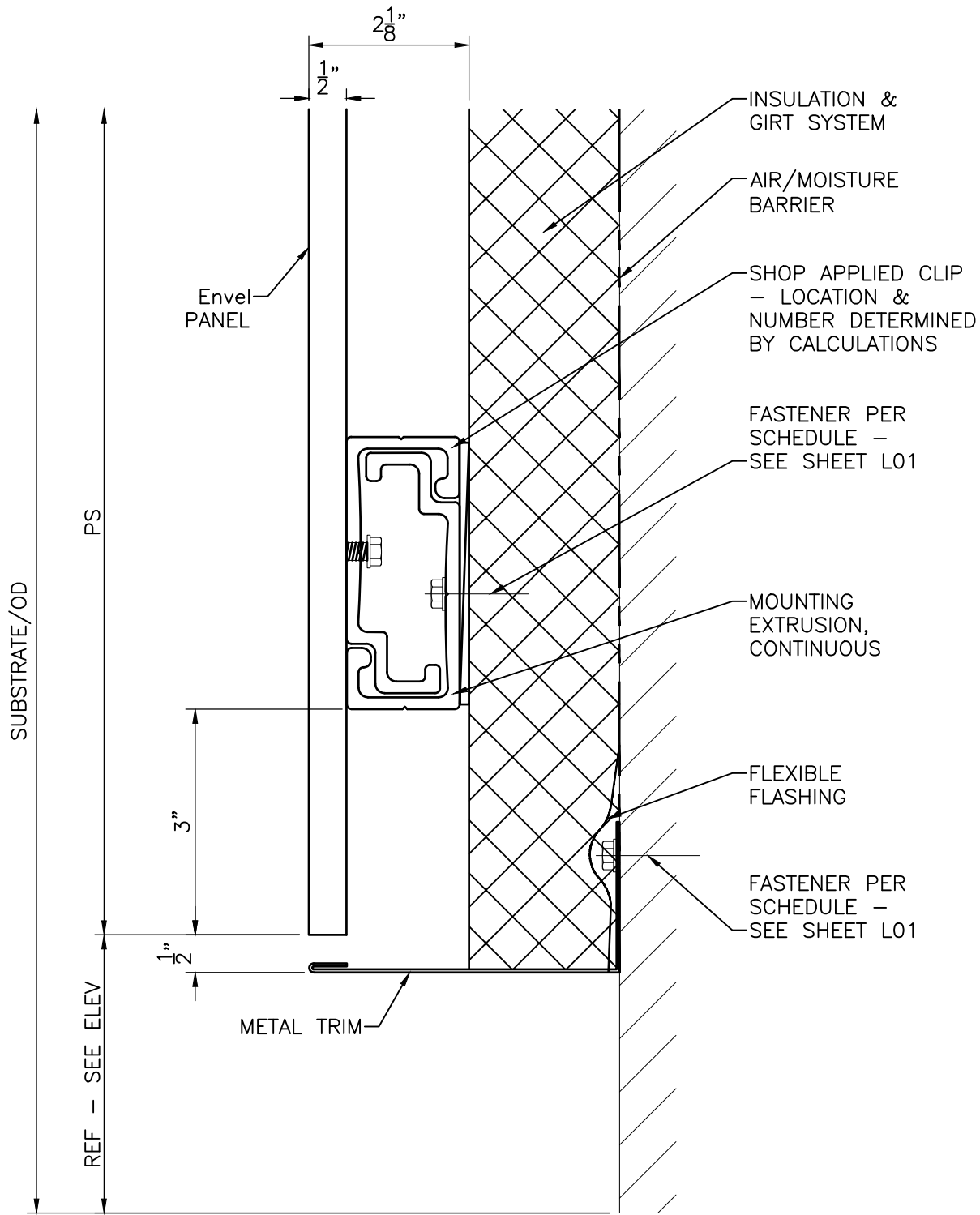


# TYPICAL GLAZING SILL



TITLE:  
**Envel PANEL SYSTEM S2**

DRAWN BY: SS	DATE: 4/11/16	REV.	SCALE: 1:2
-----------------	------------------	------	---------------



## TYPICAL SILL (EXPOSED)



TITLE:

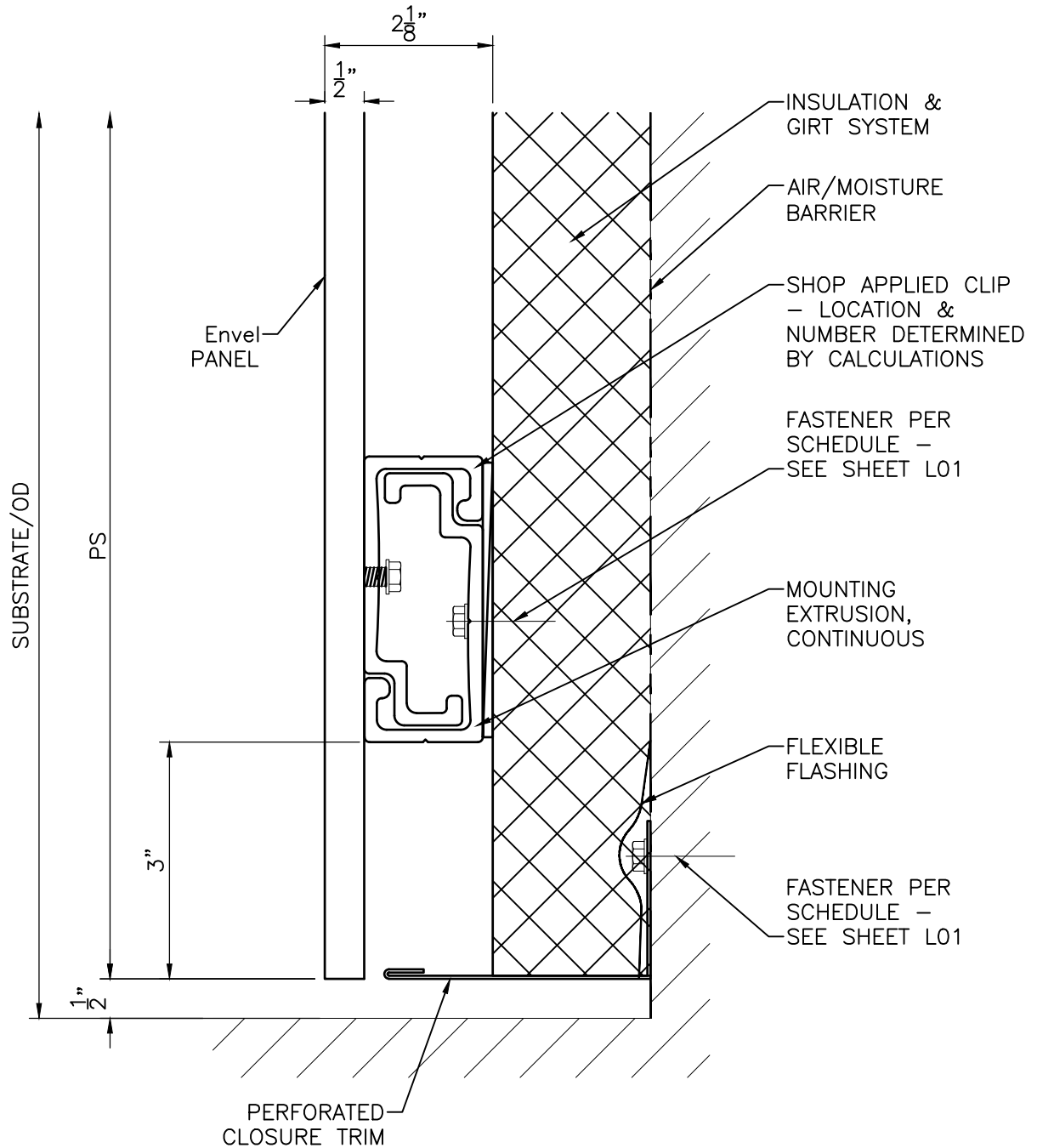
**Envel PANEL SYSTEM S2**

DRAWN BY:  
SS

DATE:  
4/11/16

REV.

SCALE:  
1:2



5A

# TYPICAL PANEL BASE



TITLE:  
**Envel PANEL SYSTEM S2**

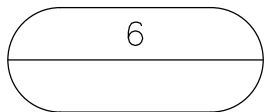
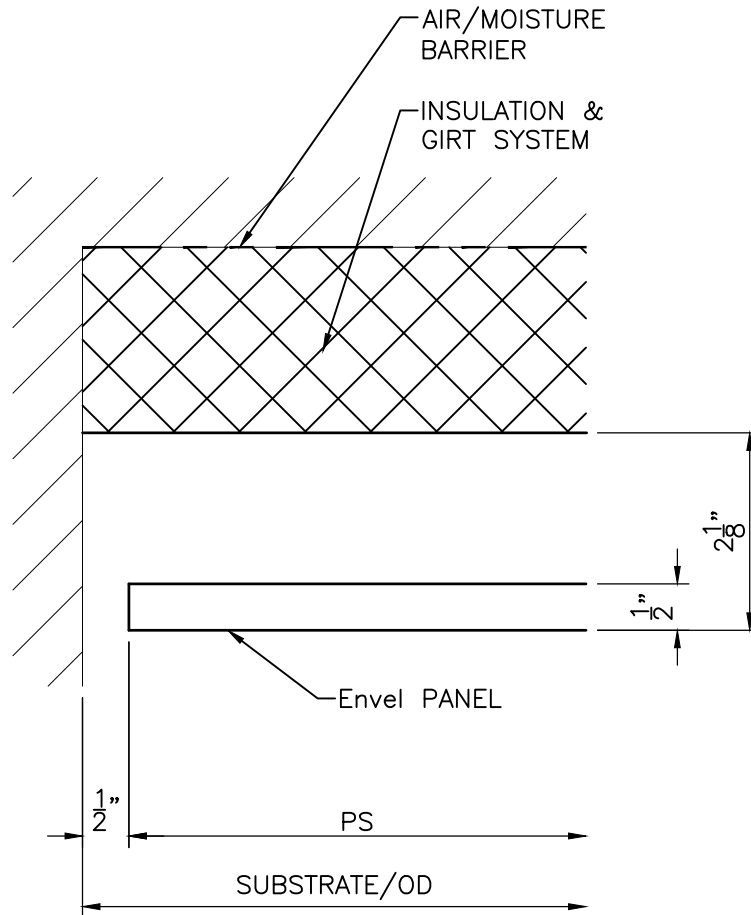
DRAWN BY:  
SS

DATE:  
4/11/16

REV.

SCALE:  
1:2





# JAMB TERMINATION



TITLE:

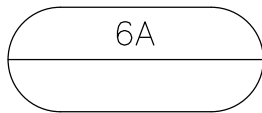
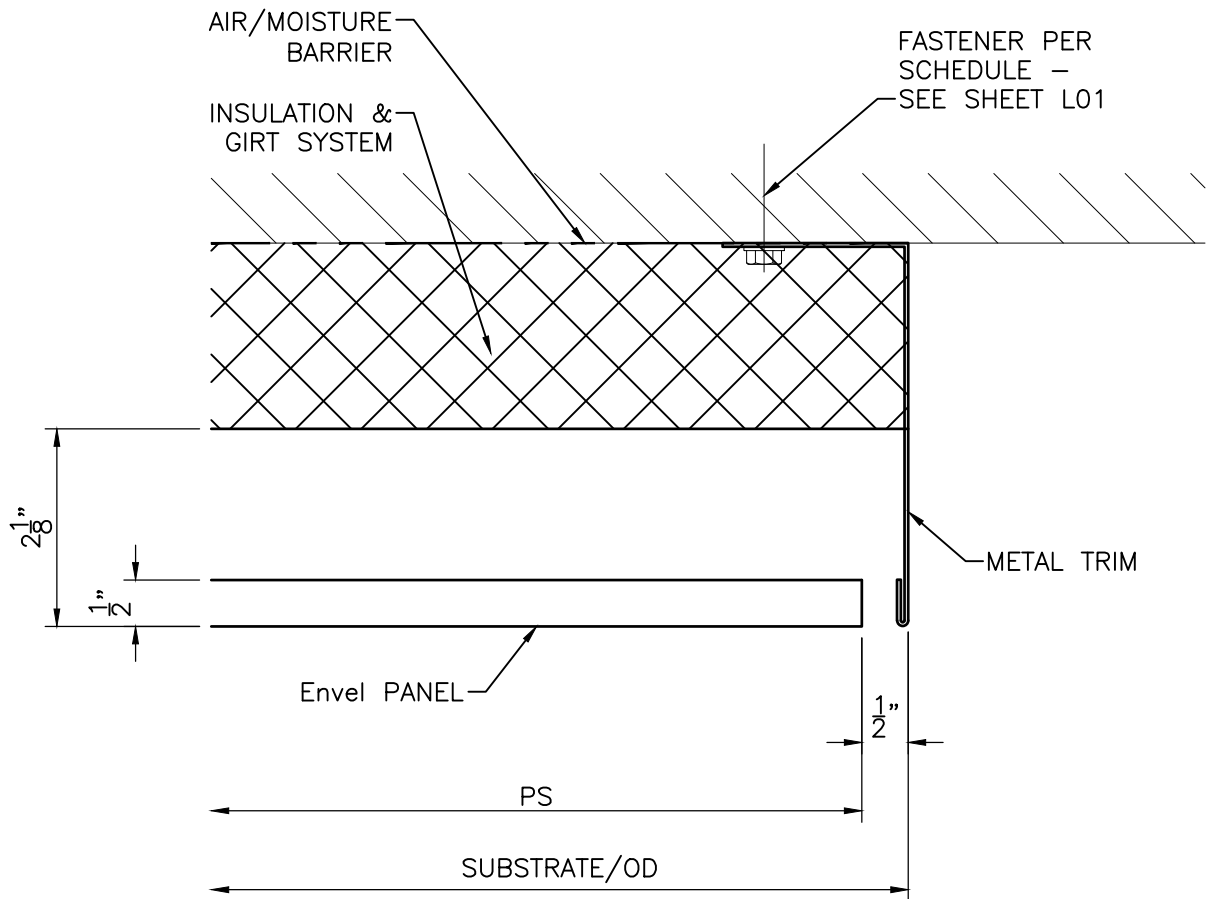
**Envel PANEL SYSTEM S2**

DRAWN BY:  
SS

DATE:  
4/11/16

REV.

SCALE:  
1:2



# JAMB TERMINATION



TITLE:

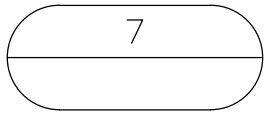
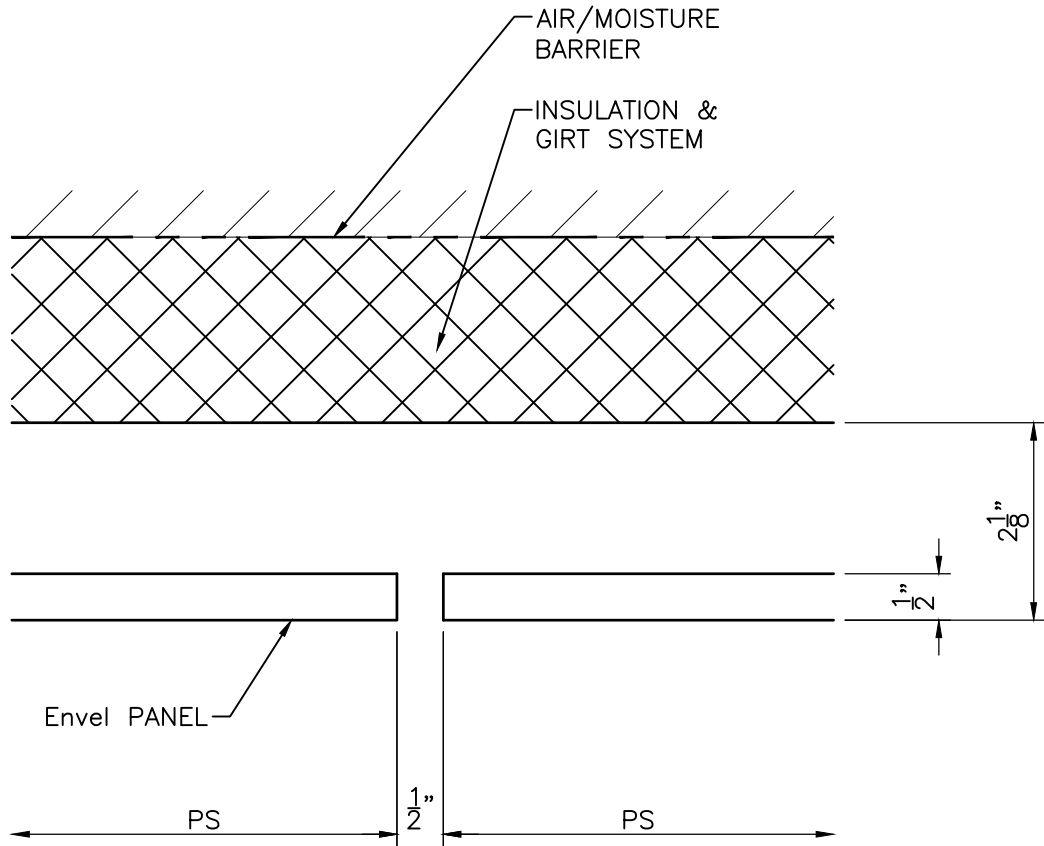
**Envel PANEL SYSTEM S2**

DRAWN BY:  
SS

DATE:  
4/11/16

REV.

SCALE:  
1:2



## VERTICAL JOINT



TITLE:

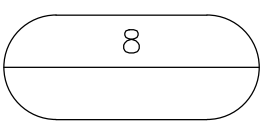
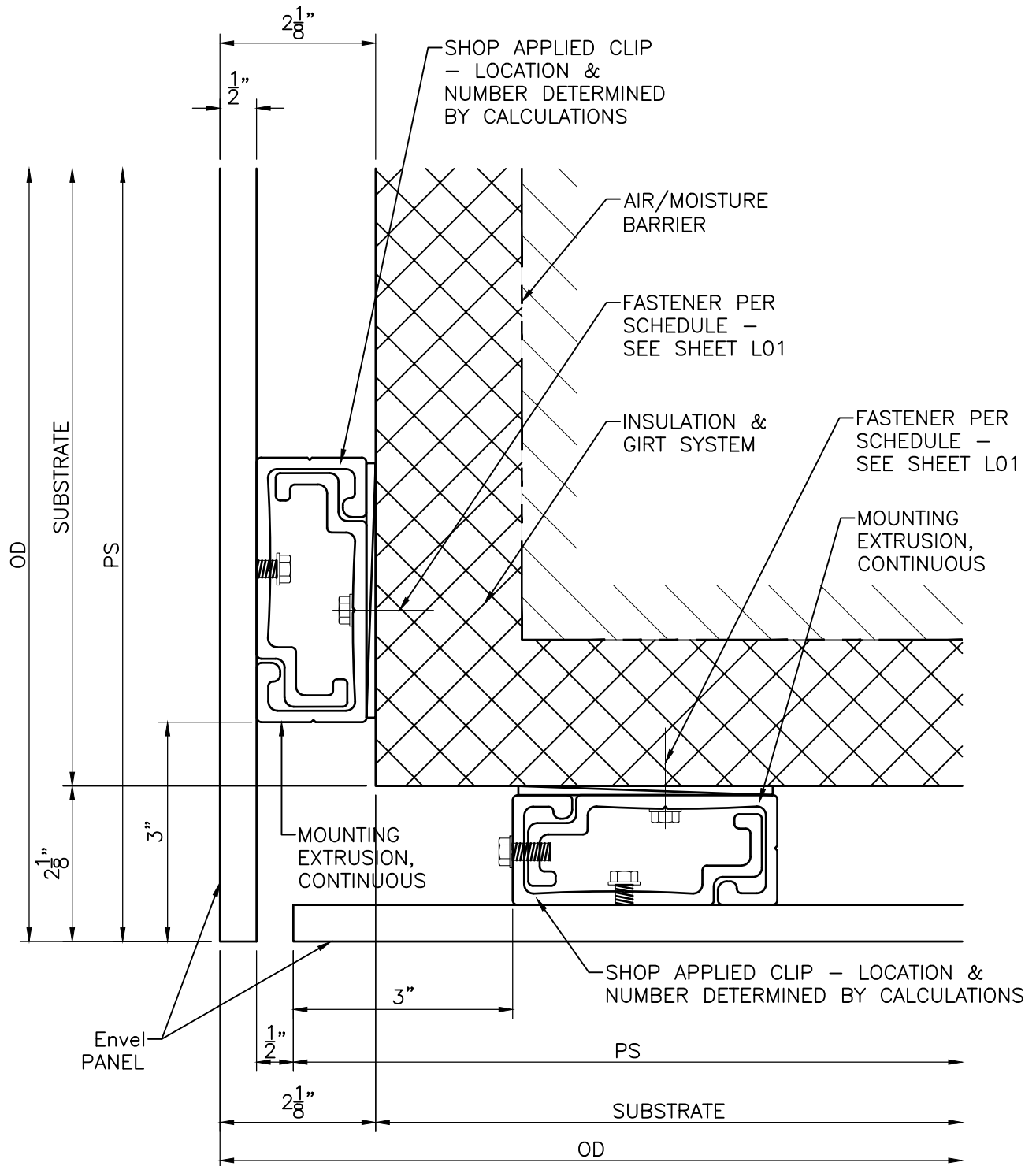
**Envel PANEL SYSTEM S2**

DRAWN BY:  
SS

DATE:  
4/11/16

REV.

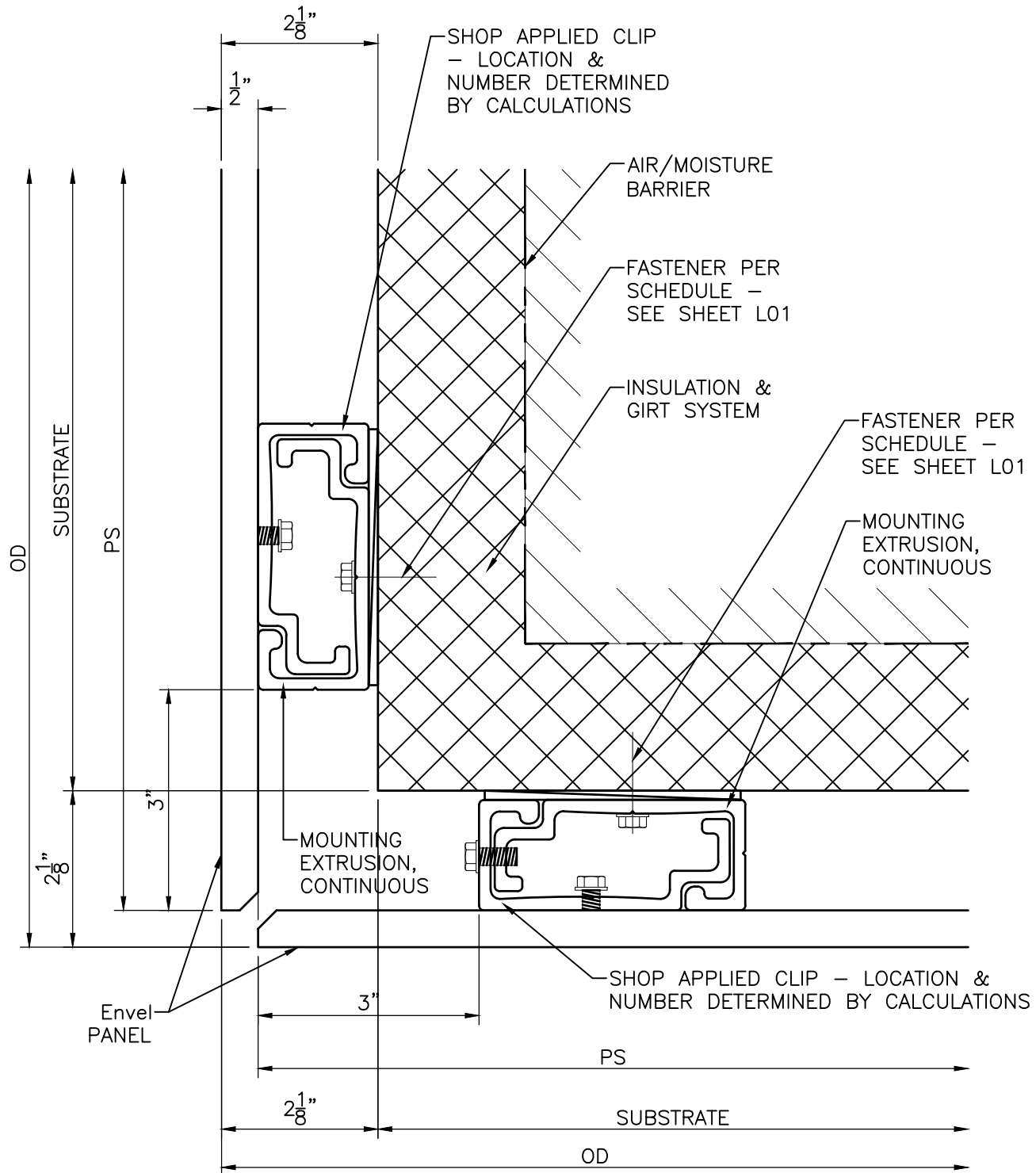
SCALE:  
1:2



# SOFFIT RETURN



TITLE: <b>Envel PANEL SYSTEM S2</b>			
DRAWN BY: SS	DATE: 4/11/16	REV.	SCALE: 1:2



8A

# SOFFIT RETURN



TITLE:  
**Envel PANEL SYSTEM S2**

DRAWN BY: SS	DATE: 4/11/16	REV.	SCALE: 1:2
-----------------	------------------	------	---------------

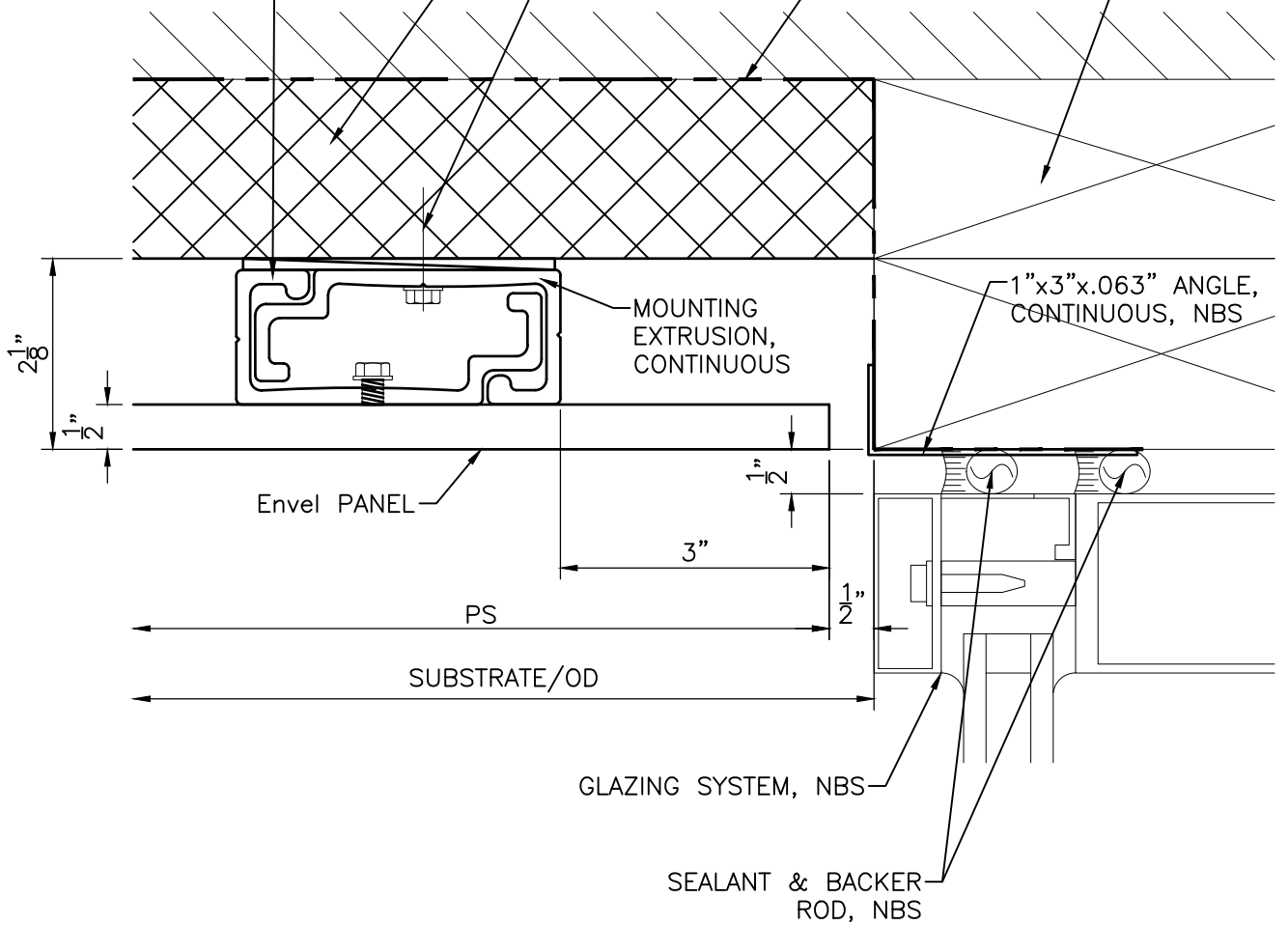
SHOP APPLIED CLIP  
 - LOCATION &  
 NUMBER DETERMINED  
 BY CALCULATIONS

INSULATION &  
 GIRT SYSTEM

AIR/MOISTURE  
 BARRIER

FASTENER PER  
 SCHEDULE -  
 SEE SHEET L01

BLOCKING,  
 NBS



2 1/8"

1/2"

Envel PANEL

MOUNTING  
 EXTRUSION,  
 CONTINUOUS

1"x3"x.063" ANGLE,  
 CONTINUOUS, NBS

1/2"

3"

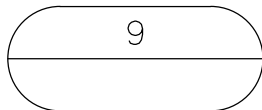
PS

1/2"

SUBSTRATE/OD

GLAZING SYSTEM, NBS

SEALANT & BACKER  
 ROD, NBS



# SOFFIT RETURN TO GLAZING HEAD



TITLE:

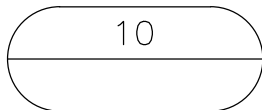
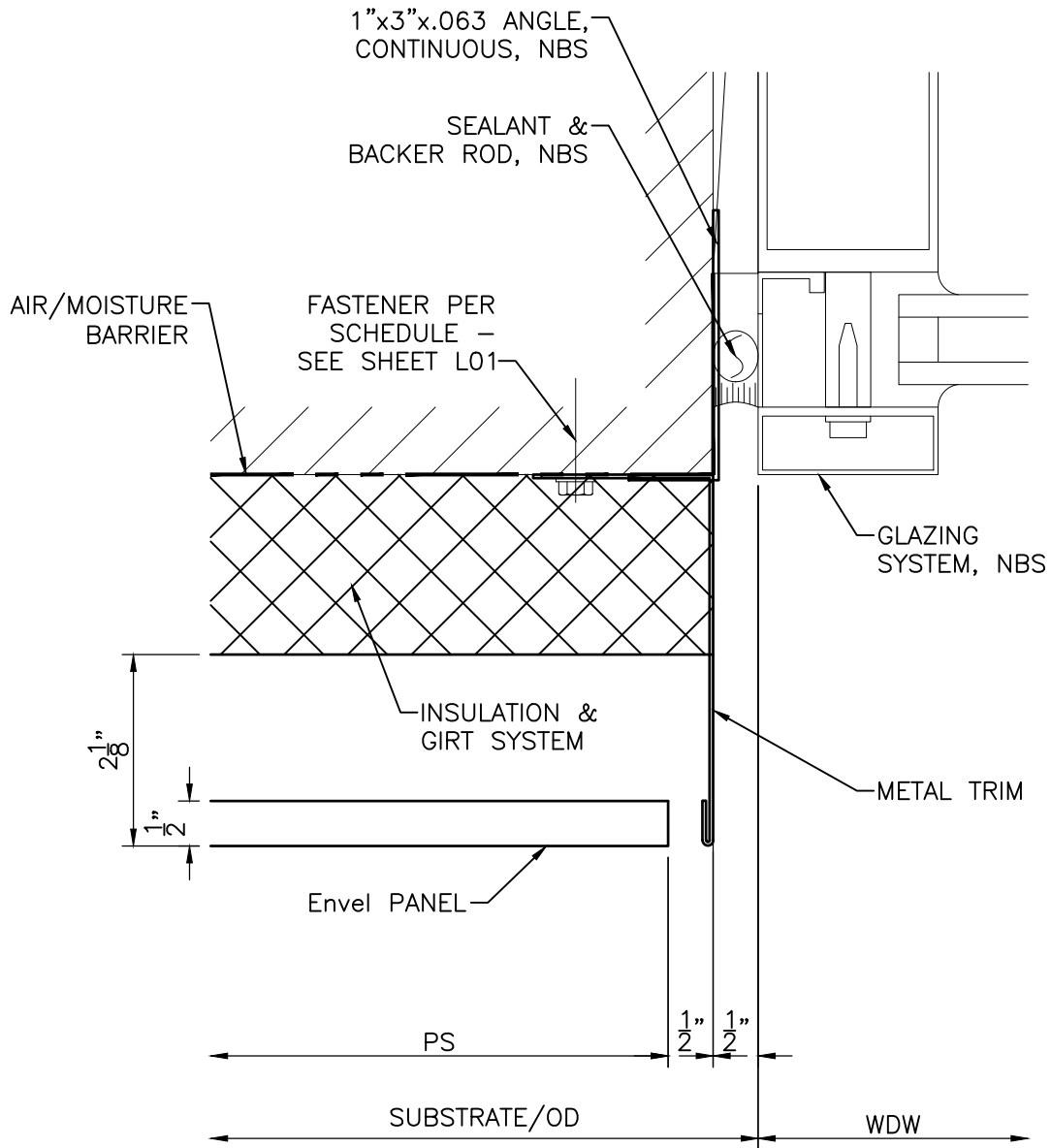
**Envel PANEL SYSTEM S2**

DRAWN BY:  
 SS

DATE:  
 4/11/16

REV.

SCALE:  
 1:2



## TYPICAL GLAZING JAMB



TITLE:

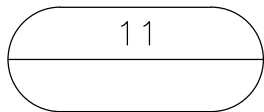
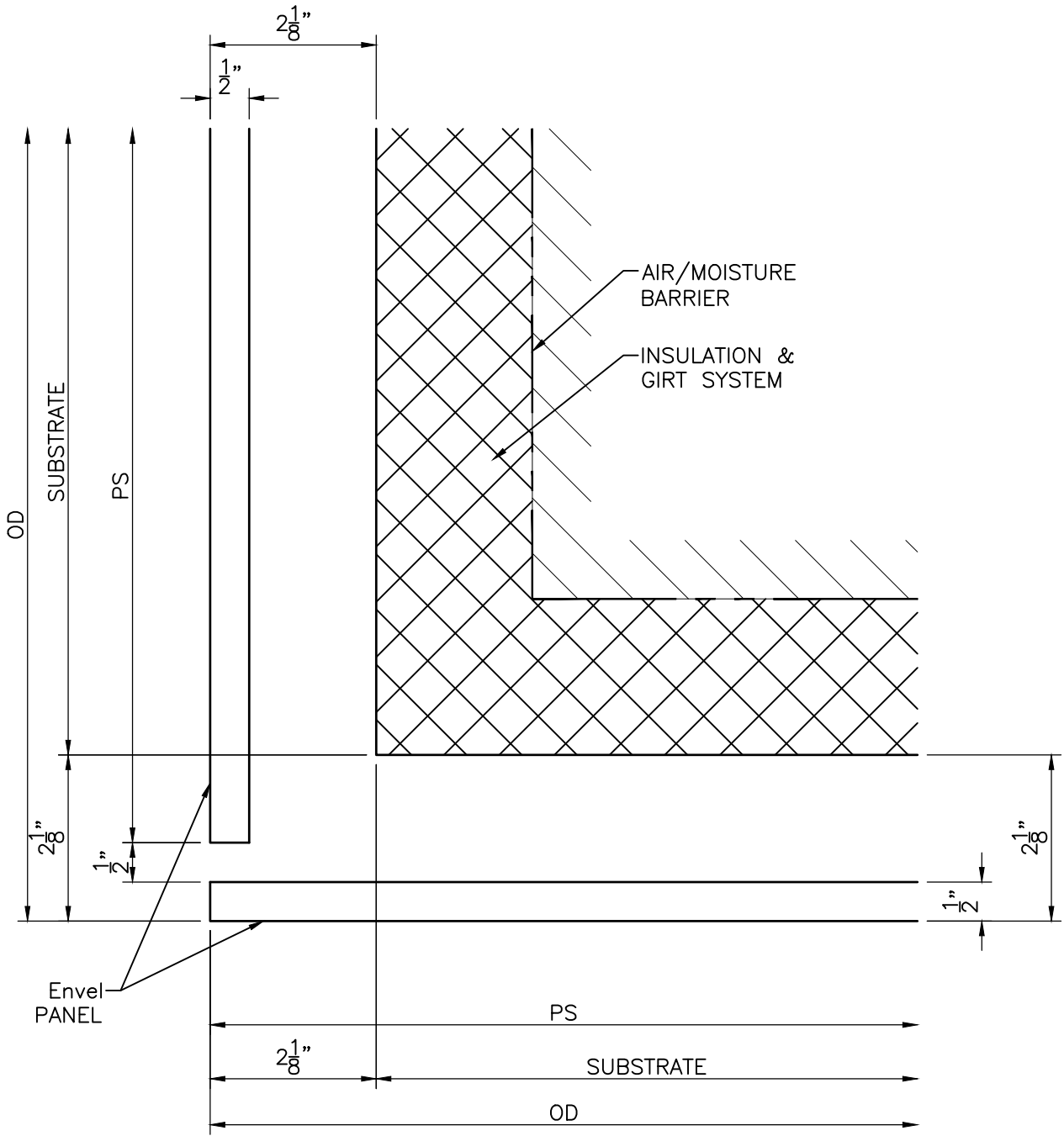
**Envel PANEL SYSTEM S2**

DRAWN BY:  
SS

DATE:  
4/11/16

REV.

SCALE:  
1:2



## OUTSIDE CORNER (PLAN VIEW)



TITLE:

**Envel PANEL SYSTEM S2**

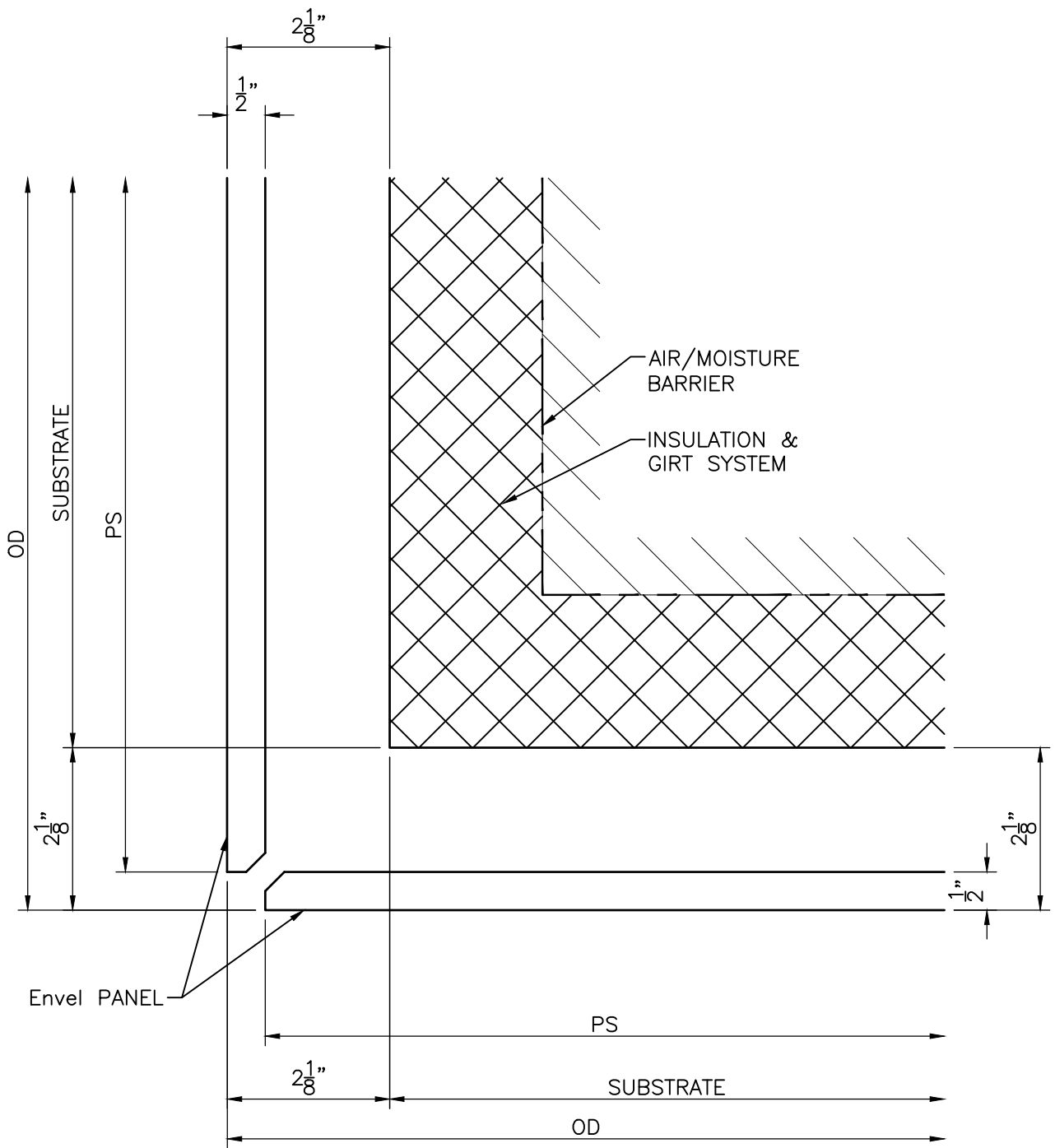
DRAWN BY:  
SS

DATE:  
4/11/16

REV.

SCALE:  
1:2





11A

# OUTSIDE CORNER (PLAN VIEW)



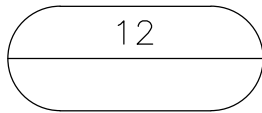
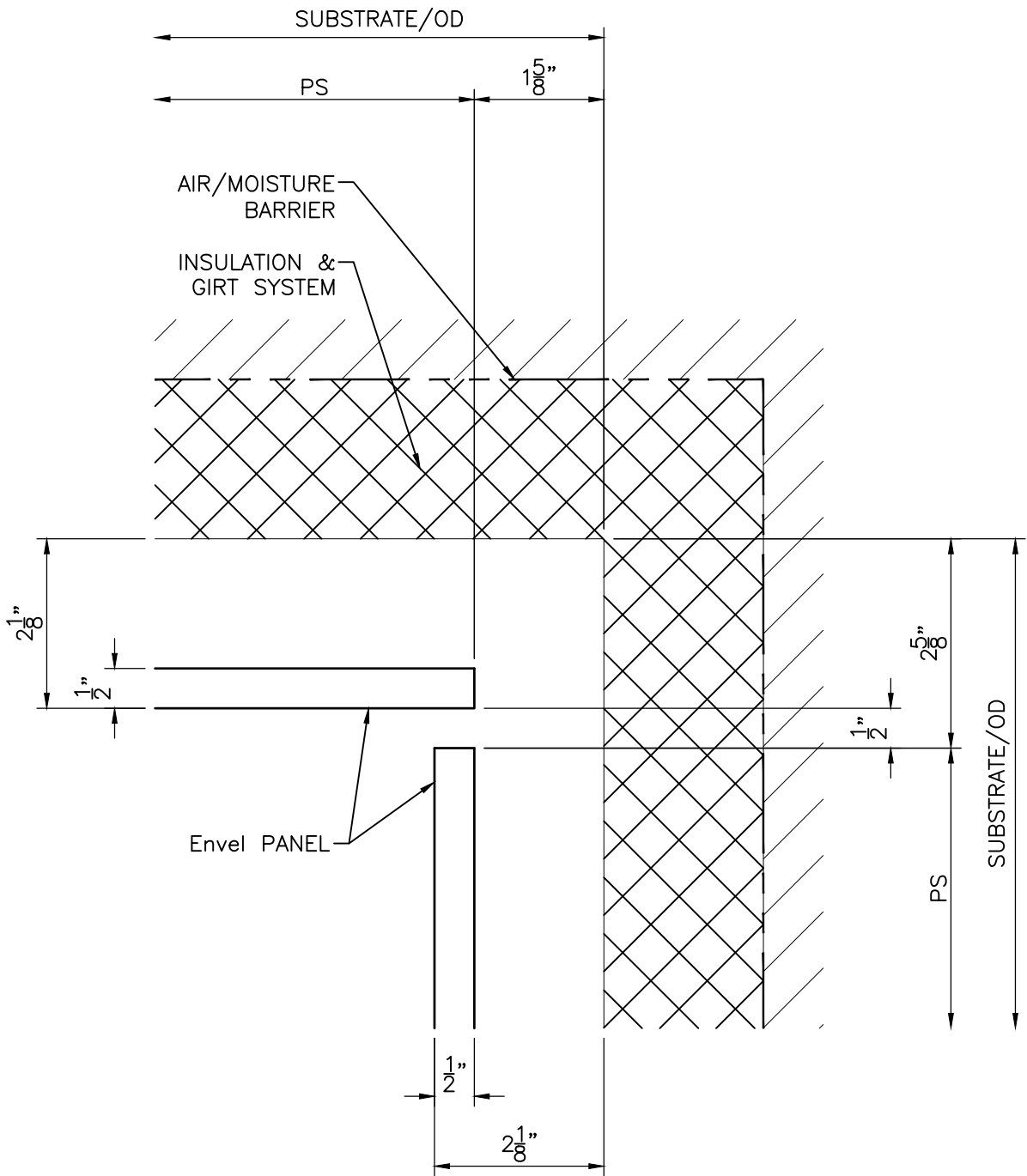
TITLE:  
**Envel PANEL SYSTEM S2**

DRAWN BY:  
SS

DATE:  
4/11/16

REV.

SCALE:  
1:2



# INSIDE CORNER (PLAN VIEW)



TITLE:

**Envel PANEL SYSTEM S2**

DRAWN BY:  
SS

DATE:  
4/11/16

REV.

SCALE:  
1:2