

Envel Panel System

PROMOTIONAL DETAILS

SHEET INDEX

L01	Cover Sheet
F01	Fastener Schedule
E01	Mock Elevation
D01	Typical Upper Termination
D02	Typical Horizontal Joint
D03	Typical Glazing Head
D04	Typical Glazing Sill
D05	Typical Sill (Exposed)
D05A	Typical Panel Base
D06	Jamb Termination
D06A	Jamb Termination (Exposed)
D07	Typical Vertical Joint
D08	Soffit Return
D08A	Soffit Return (Quirk Mitered Edge)
D09	Soffit Return To Glazing Head
D10	Typical Glazing Jamb
D11	Outside Corner - Plan View
D11A	Outside Corner - Plan View (Quirk Mitered Edge)
D12	Inside Corner - Plan View

System:

SYSTEM: CONCEALED FASTENER
CLADDING: ENVEL UHPC RAINSCREEN

ENVEL UHPC RAINSCREEN
Concealed Fastener


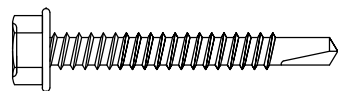
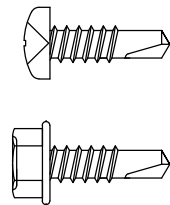
Sheet Title: Cover Sheet	
Issue Date: 4/7/20	File Name: 000-L01
Scale: Full	Sheet: L01

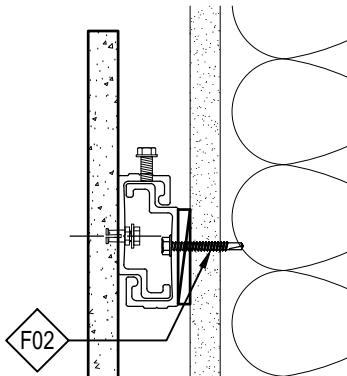


<http://www.envelfacade.com>

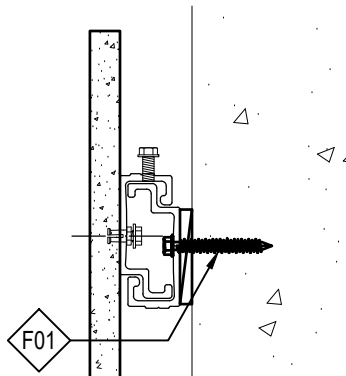
sales@envelfacade.com

ENVEL TYPICAL FASTENER SCHEDULE

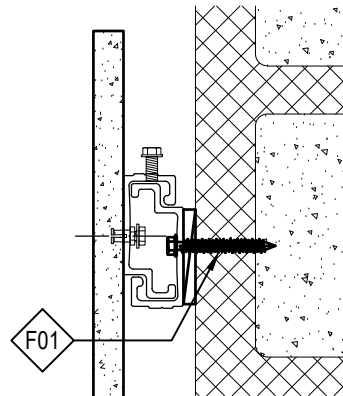
F01	#12 Tapcon		Use when fastening into concrete or masonry conditions. Minimum of $1\frac{3}{4}$ " embedment and minimum of 2" from any edge to avoid structural blowout.
F02	10-16x $1\frac{1}{2}$ " HWH #3 12-14x $1\frac{1}{2}$ " HWH #2		Use when fastening into structural steel and metal studs with different substrate faces (i.e., gypsum or plywood). Minimum of 2 threads must penetrate back face of structural member.
F03	10-16x $\frac{5}{8}$ " Pan #3 10-24x $\frac{5}{8}$ " HWH #2		Use when fastening into structural steel and metal studs with no substrate faces. Minimum of 2 threads must penetrate back face of structural member.



STEEL STUD



CONCRETE



CMU BLOCK

System:

SYSTEM: CONCEALED FASTENER
CLADDING: ENVEL UHPC RAINSCREEN

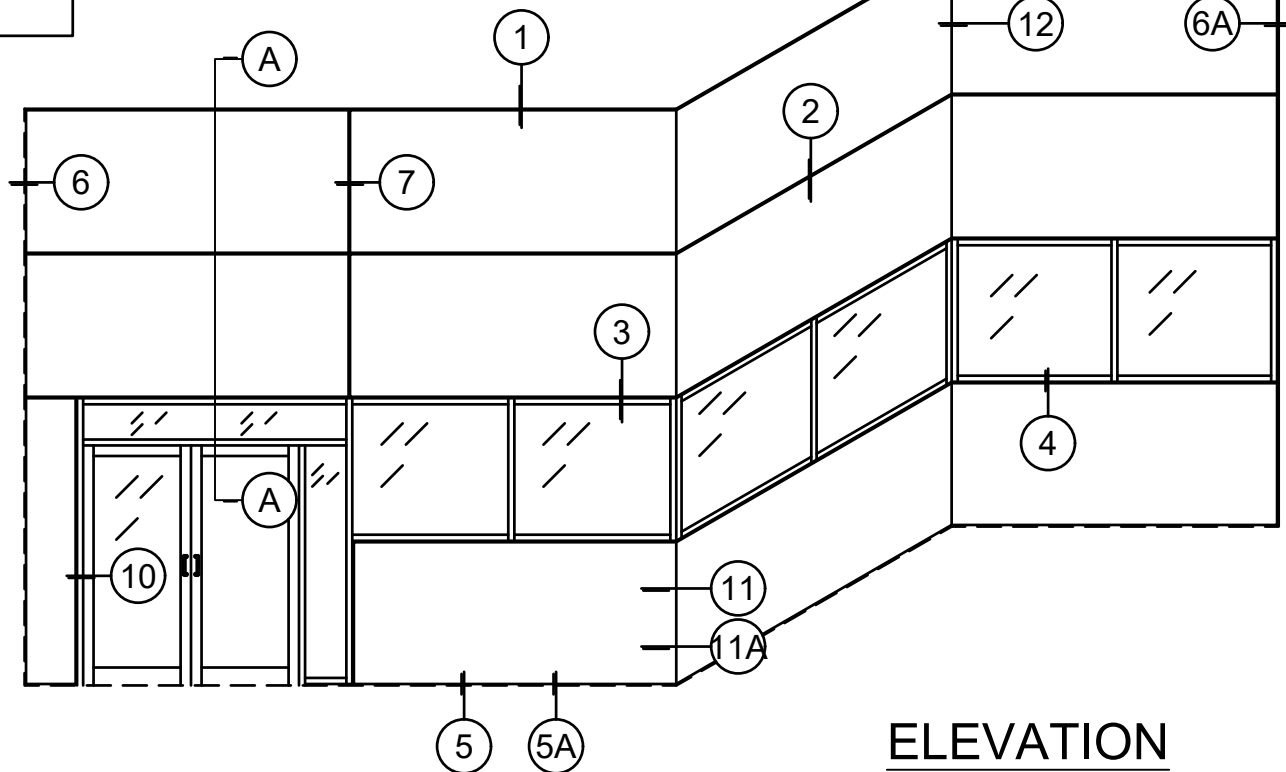
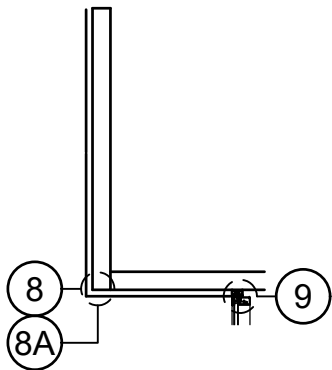
ENVEL UHPC RAINSCREEN
Concealed Fastener

Sheet Title: Fastener Schedule	Issue Date: 4/7/20	File Name: 000-F01
Scale: Full	Sheet: F01	



<http://www.envelfacade.com>

sales@envelfacade.com



System:

SYSTEM: CONCEALED FASTENER
CLADDING: ENVEL UHPC RAINSCREEN

ENVEL UHPC RAINSCREEN

Concealed Fastener

Sheet Title:	Mock Elevation	
Issue Date:	4/7/20	File Name: 000-E01
Scale:	NTS	Sheet: E01



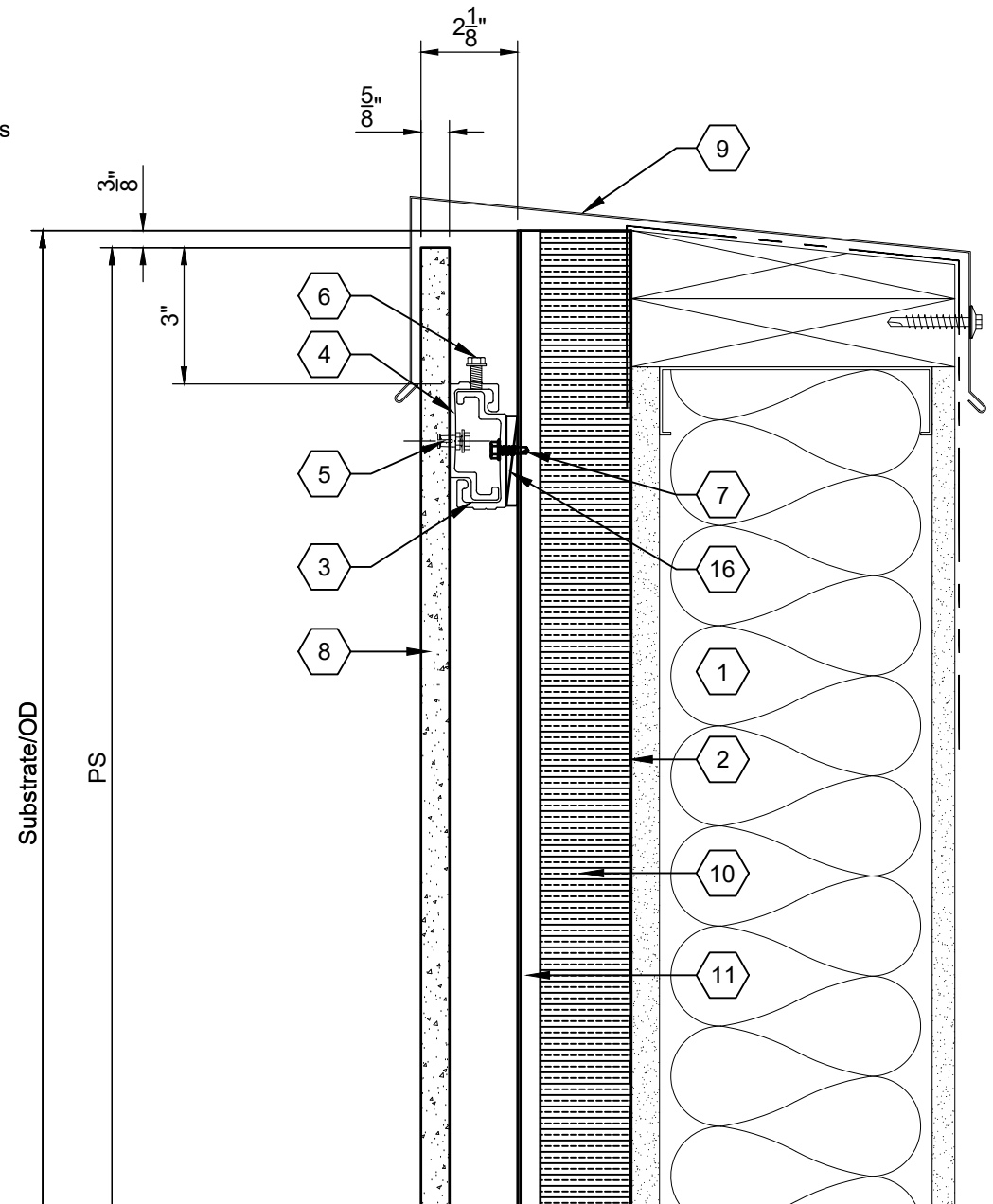
<http://www.envelfacade.com>

sales@envelfacade.com



DRAWING KEYNOTES

1. Stud Framed Wall Assembly, Per Arch.
2. Weather & Air Barrier, Per Arch.
3. Envel Mounting Extrusion, Continuous
4. Envel Shop Applied Clip - Location & Number Determined By Calculations
5. Clip Attachment Anchor
6. Leveling Bolt/Fixing Anchor - Fix (1) Clip Per Panel In Bed Of Sealant
7. Fastener Per Schedule - See Sheet F01
8. 5/8" Envel Panel, Flat Or Textured Finish
9. Sheet Metal Coping, By Others
10. Insulation, Thickness & Type Per Arch.
11. Vertical Aluminum Sub-girt
12. n/a
13. n/a
14. n/a
15. n/a
16. 1/4" Shim



System:

SYSTEM: CONCEALED FASTENER
CLADDING: ENVEL UHPC RAINSCREEN

ENVEL UHPC RAINSCREEN

Concealed Fastener

Sheet Title:

Typical Upper Termination

Issue Date:

4/7/20

File Name:

000-D01

Scale:

3" = 1'-0"

Sheet:

D01



<http://www.envelfacade.com>

sales@envelfacade.com



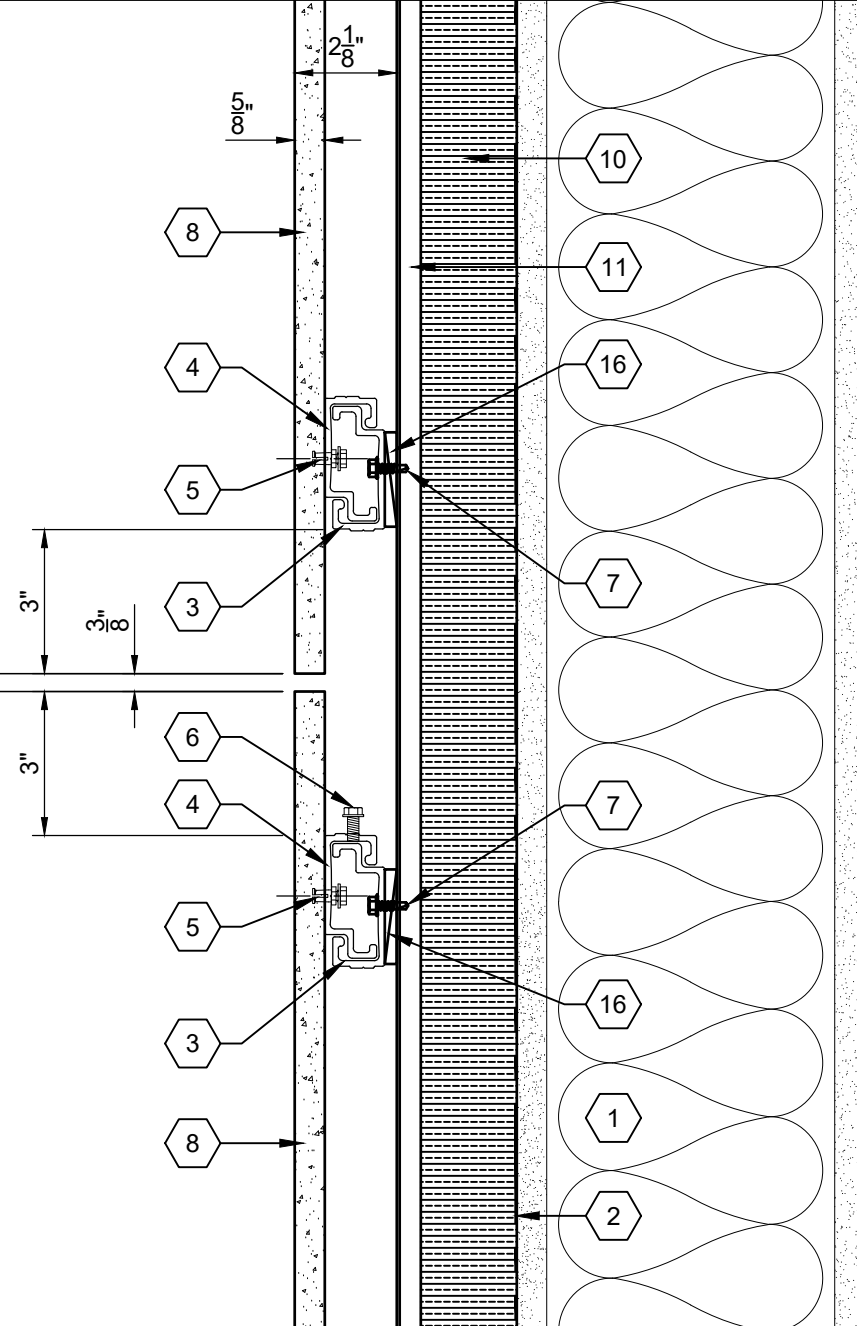
DRAWING KEYNOTES

1. Stud Framed Wall Assembly, Per Arch.
2. Weather & Air Barrier, Per Arch.
3. Envel Mounting Extrusion, Continuous
4. Envel Shop Applied Clip - Location & Number Determined By Calculations
5. Clip Attachment Anchor
6. Leveling Bolt/Fixing Anchor - Fix (1) Clip Per Panel In Bed Of Sealant
7. Fastener Per Schedule - See Sheet F01
8. 5/8" Envel Panel, Flat Or Textured Finish
9. n/a
10. Insulation, Thickness & Type Per Arch.
11. Vertical Aluminum Sub-girt
12. n/a
13. n/a
14. n/a
15. n/a
16. 1/4" Shim

Substrate/OD

PS

PS



System:

SYSTEM: CONCEALED FASTENER
CLADDING: ENVEL UHPC RAINSCREEN

ENVEL UHPC RAINSCREEN

Concealed Fastener

Sheet Title:

Typical Horizontal Joint

Issue Date:

4/7/20

File Name:

000-D02

Scale:

3" = 1'-0"

Sheet:

D02



<http://www.envelfacade.com>

sales@envelfacade.com



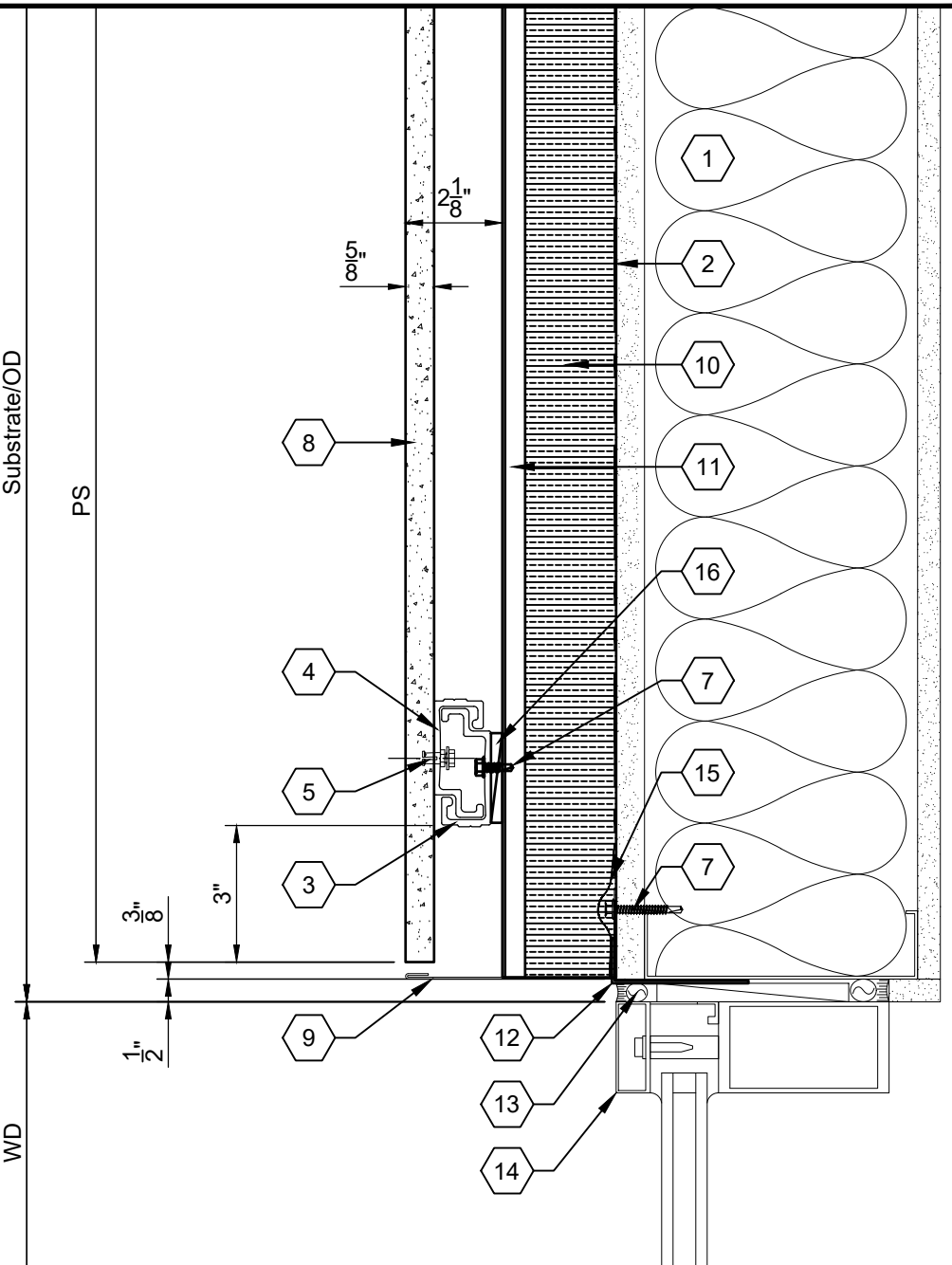
DRAWING KEYNOTES

1. Stud Framed Wall Assembly, Per Arch.
2. Weather & Air Barrier, Per Arch.
3. Envel Mounting Extrusion, Continuous
4. Envel Shop Applied Clip - Location & Number Determined By Calculations
5. Clip Attachment Anchor
6. n/a
7. Fastener Per Schedule - See Sheet F01
8. 5/8" Envel Panel, Flat Or Textured Finish
9. Sheet Metal Trim/Flashing, By Others
10. Insulation, Thickness & Type Per Arch.
11. Vertical Aluminum Sub-girt
12. 1"x3"x.063 Angle, Continuous, By Others
13. Sealant & Backer Rod, By Others
14. Glazing System, By Others
15. Flexible Flashing
16. 1/4" Shim

Substrate/OD

PS

WD



System:

SYSTEM: CONCEALED FASTENER
CLADDING: ENVEL UHPC RAINSCREEN

ENVEL UHPC RAINSCREEN

Concealed Fastener

Sheet Title:

Typical Glazing Head

Issue Date:

4/7/20

File Name:

000-D03

Scale:

3" = 1'-0"

Sheet:

D03



<http://www.envelfacade.com>

sales@envelfacade.com

DRAWING KEYNOTES

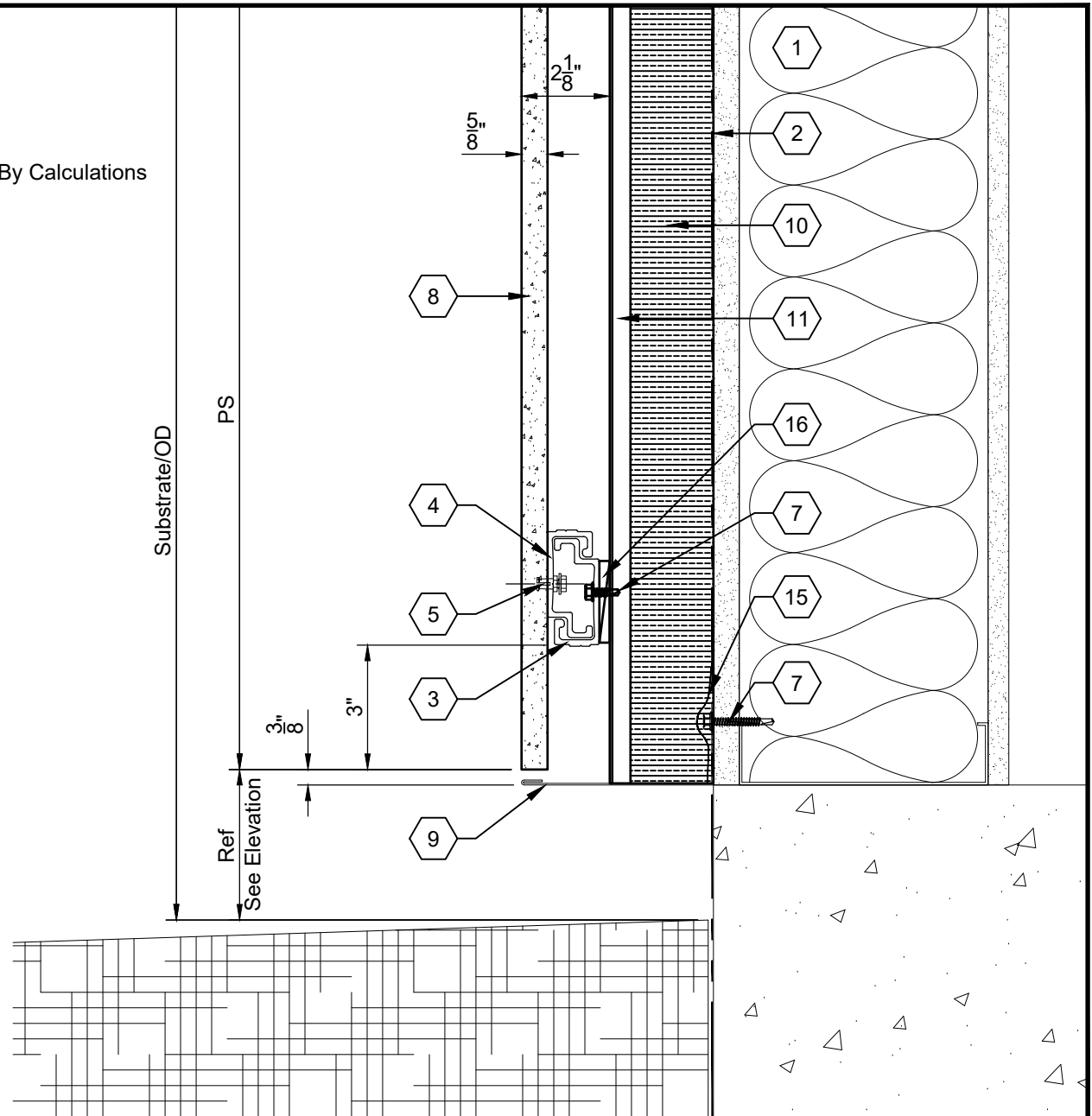
-





DRAWING KEYNOTES

1. Stud Framed Wall Assembly, Per Arch.
2. Weather & Air Barrier, Per Arch.
3. Envel Mounting Extrusion, Continuous
4. Envel Shop Applied Clip - Location & Number Determined By Calculations
5. Clip Attachment Anchor
6. n/a
7. Fastener Per Schedule - See Sheet F01
8. 5/8" Envel Panel, Flat Or Textured Finish
9. Sheet Metal Trim/Flashing, By Others
10. Insulation, Thickness & Type Per Arch.
11. Vertical Aluminum Sub-girt
12. n/a
13. n/a
14. n/a
15. Flexible Flashing
16. 1/4" Shim



System:

SYSTEM: CONCEALED FASTENER
CLADDING: ENVEL UHPC RAINSCREEN

ENVEL UHPC RAINSCREEN

Concealed Fastener

Sheet Title: Typical Sill (Exposed)		
Issue Date:	4/7/20	File Name: 000-D05
Scale:	3" = 1'-0"	Sheet: D05



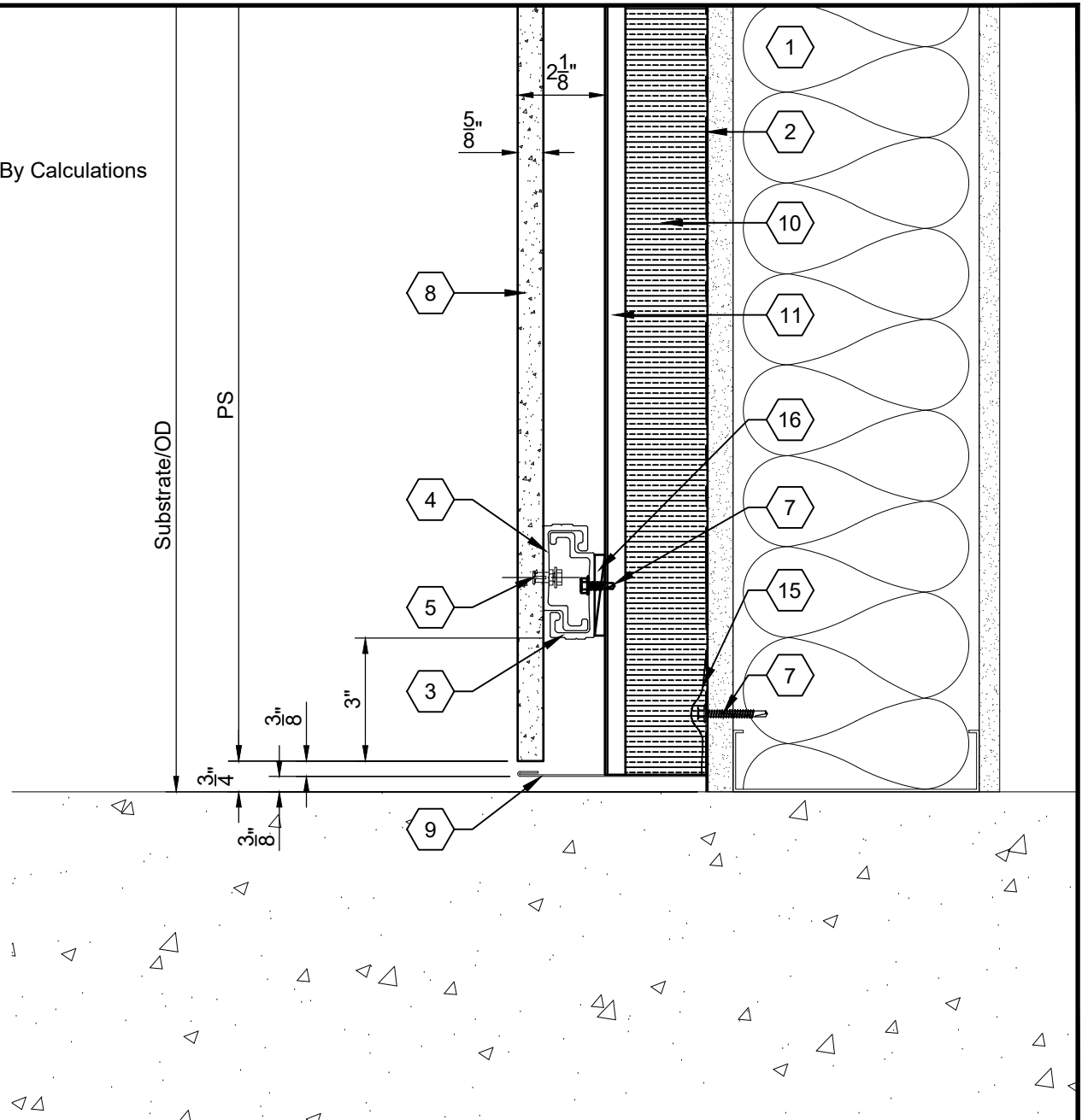
<http://www.envelfacade.com>

sales@envelfacade.com



DRAWING KEYNOTES

1. Stud Framed Wall Assembly, Per Arch.
2. Weather & Air Barrier, Per Arch.
3. Envel Mounting Extrusion, Continuous
4. Envel Shop Applied Clip - Location & Number Determined By Calculations
5. Clip Attachment Anchor
6. n/a
7. Fastener Per Schedule - See Sheet F01
8. 5/8" Envel Panel, Flat Or Textured Finish
9. Sheet Metal Trim/Flashing, By Others
10. Insulation, Thickness & Type Per Arch.
11. Vertical Aluminum Sub-girt
12. n/a
13. n/a
14. n/a
15. Flexible Flashing
16. 1/4" Shim



System:

SYSTEM: CONCEALED FASTENER
CLADDING: ENVEL UHPC RAINSCREEN

ENVEL UHPC RAINSCREEN

Concealed Fastener

Sheet Title: Typical Panel Base		
Issue Date:	4/7/20	File Name: 000-D05A
Scale:	3" = 1'-0"	Sheet: D05A



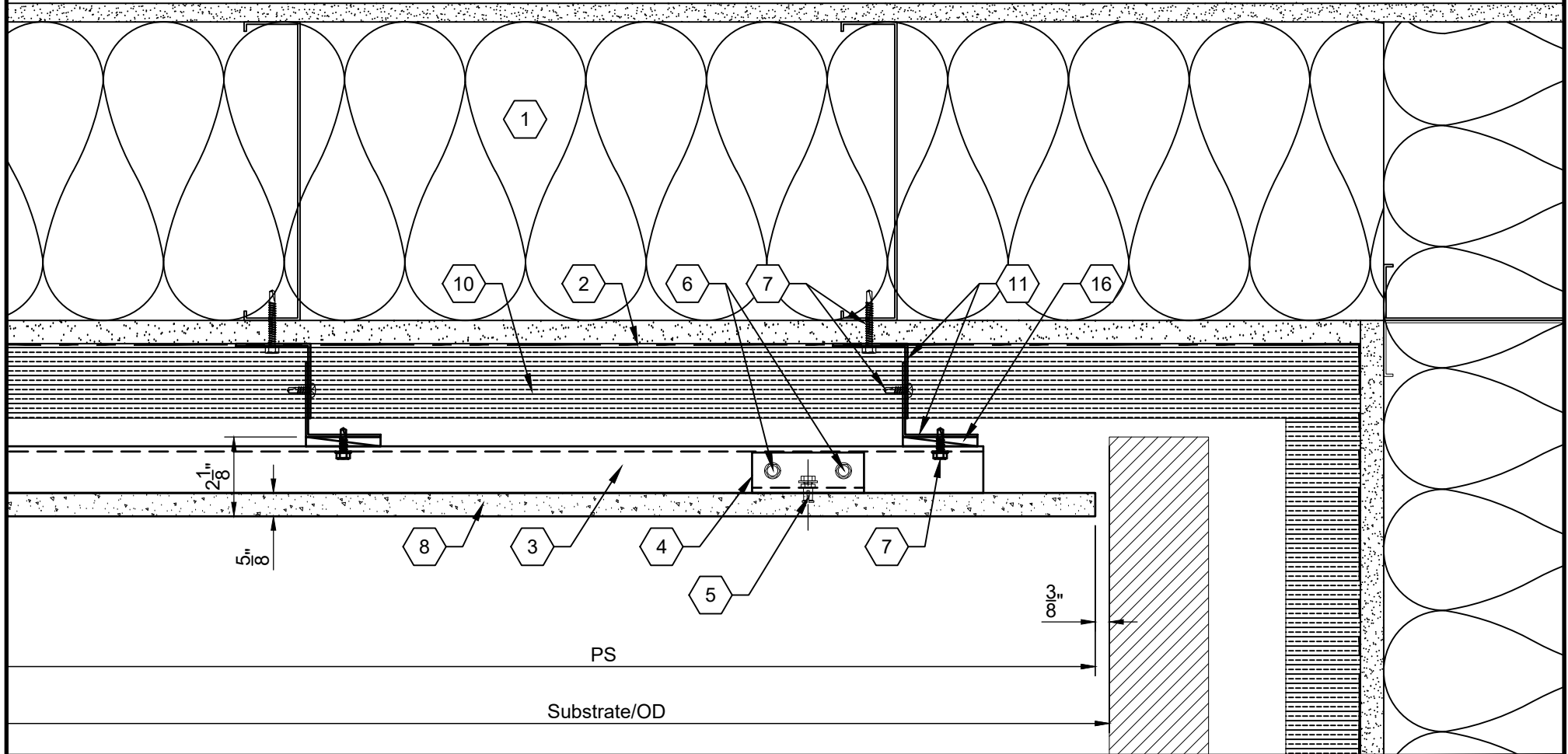
<http://www.envelfacade.com>

sales@envelfacade.com



DRAWING KEYNOTES

1. Stud Framed Wall Assembly, Per Arch.
2. Weather & Air Barrier, Per Arch.
3. Envel Mounting Extrusion, Continuous
4. Envel Shop Applied Clip - Location & Number Determined By Calculations
5. n/a
6. n/a
7. Fastener Per Schedule - See Sheet F01
8. 5/8" Envel Panel, Flat Or Textured Finish
9. n/a
10. Insulation, Thickness & Type Per Arch.
11. Vertical Aluminum Sub-girt
12. n/a
13. n/a
14. n/a
15. n/a
16. 1/4" Shim



System:

SYSTEM: CONCEALED FASTENER
CLADDING: ENVEL UHPC RAINSCREEN

ENVEL UHPC RAINSCREEN

Concealed Fastener

Sheet Title:

Jamb Termination

Issue Date:

4/7/20

File Name:

000-D06

Scale:

3" = 1'-0"

Sheet:

D06



<http://www.envelfacade.com>

sales@envelfacade.com

DRAWING KEYNOTES

-
- This technical cross-section diagram illustrates a multi-layered assembly. The top layer features a repeating pattern of teardrop shapes, labeled with a hexagon containing the number 1. Below this is a thin, stippled layer. The main body of the assembly consists of several horizontal layers. A central layer is filled with horizontal hatching and is labeled with a hexagon containing the number 2. Below this is a layer with a dashed line, labeled with a hexagon containing the number 3. Further down is a layer with a stippled pattern, labeled with a hexagon containing the number 4. The bottom-most layer is labeled with a hexagon containing the number 5. The assembly is supported by a base labeled 'Substrate/OD'. Various components and features are labeled with hexagons containing numbers 1 through 16. Dimensions are indicated with arrows and text: $1\frac{1}{8}"$, $2\frac{1}{8}"$, $5\frac{1}{8}"$, $3\frac{3}{8}"$, and 'PS'. The diagram shows a complex arrangement of layers, including a hatched layer, a dashed layer, and a stippled layer, all supported by a substrate.

SYSTEM: CONCEALED FASTENER
CLADDING: ENVEL UHPC RAINSCREEN

ENVEL UHPC RAINSCREEN

Concealed Fastener

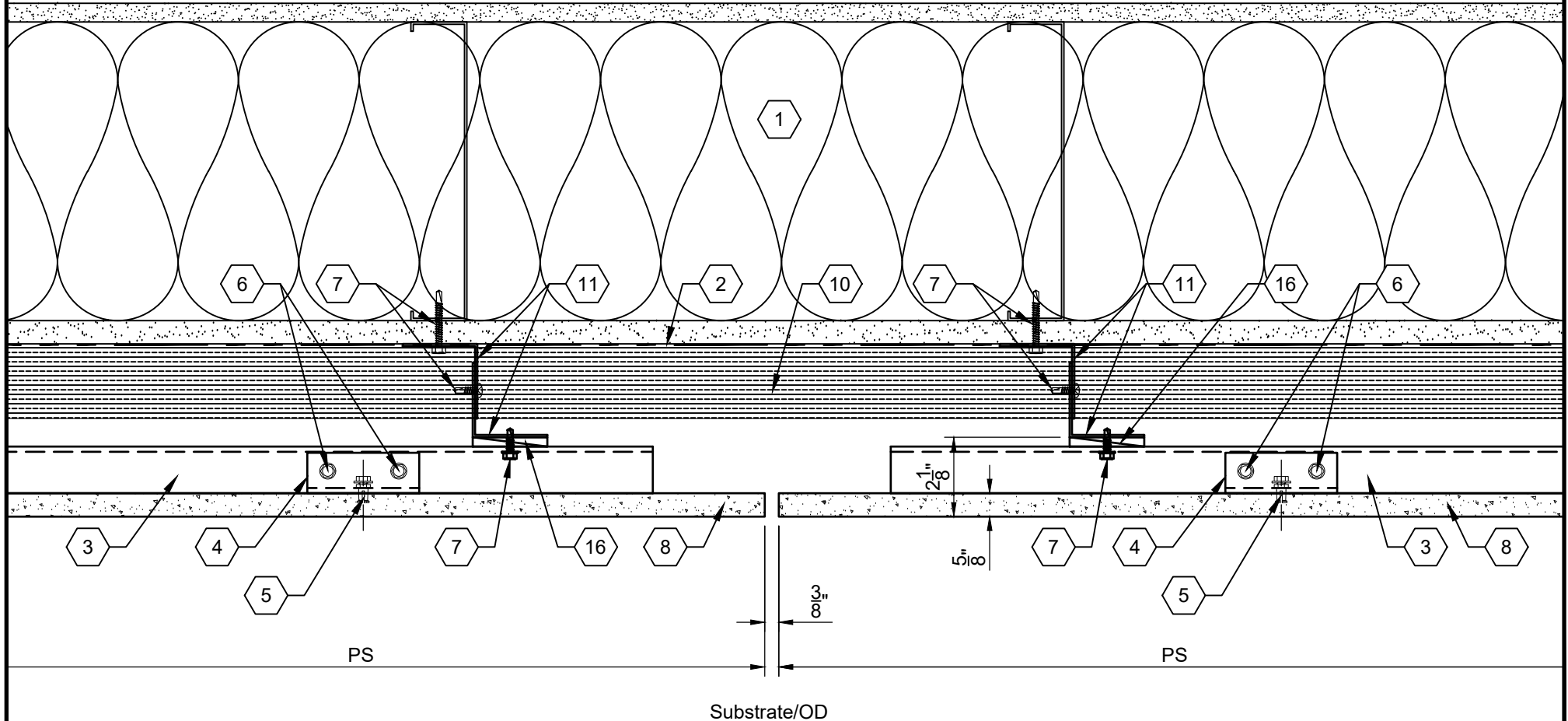
Sheet: **D06A**

sales@envelfacade.com



DRAWING KEYNOTES

1. Stud Framed Wall Assembly, Per Arch.
2. Weather & Air Barrier, Per Arch.
3. Envel Mounting Extrusion, Continuous
4. Envel Shop Applied Clip - Location & Number Determined By Calculations
5. n/a
6. n/a
7. Fastener Per Schedule - See Sheet F01
8. 5/8" Envel Panel, Flat Or Textured Finish
9. n/a
10. Insulation, Thickness & Type Per Arch.
11. Vertical Aluminum Sub-girt
12. n/a
13. n/a
14. n/a
15. n/a
16. 1/4" Shim



System:

SYSTEM: CONCEALED FASTENER
CLADDING: ENVEL UHPC RAINSCREEN

ENVEL UHPC RAINSCREEN

Concealed Fastener

Sheet Title:

Typical Vertical Joint

Issue Date:

4/7/20

File Name:

000-D07

Scale:

3" = 1'-0"

Sheet:

D07



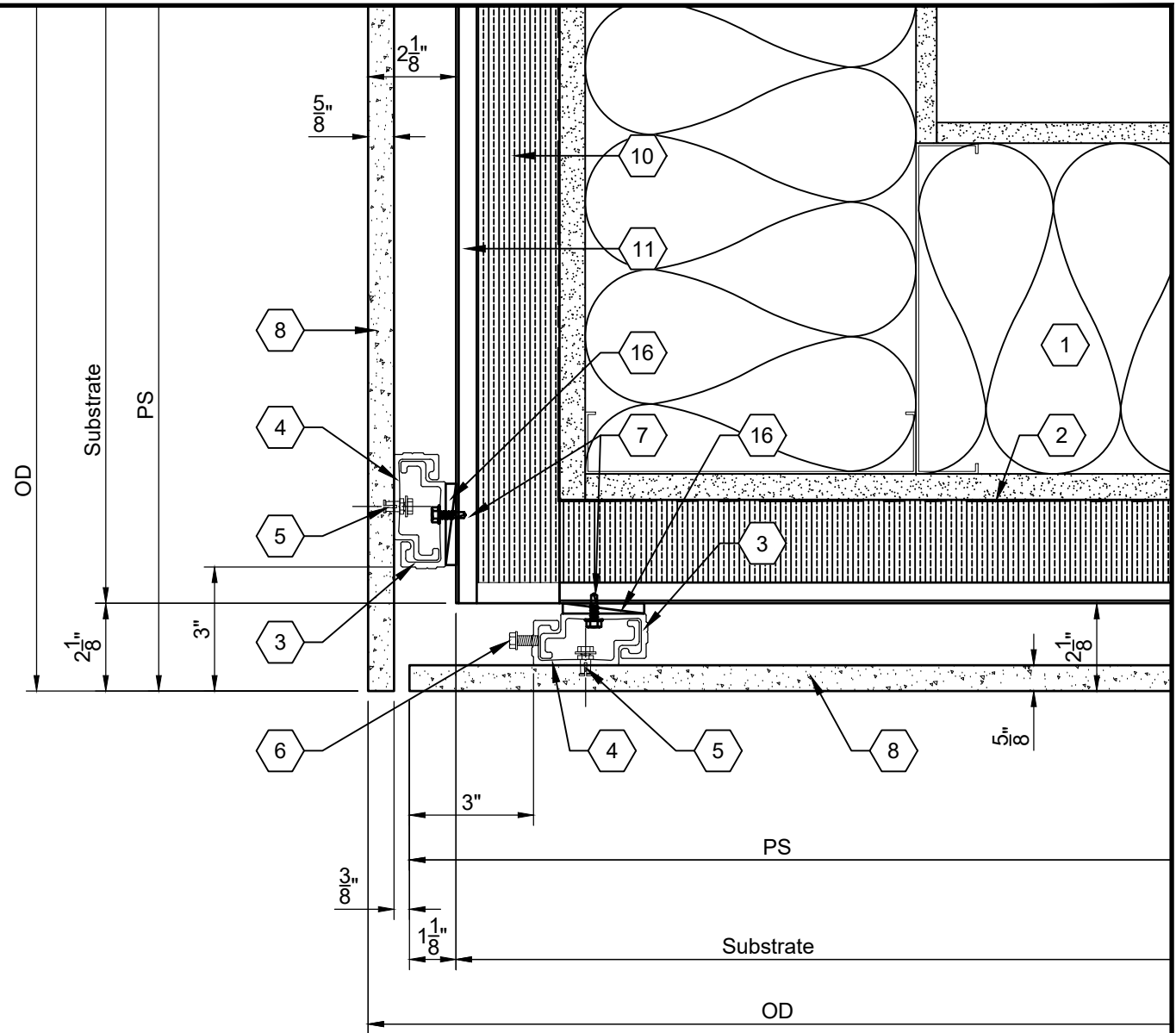
<http://www.envelfacade.com>

sales@envelfacade.com



DRAWING KEYNOTES

1. Stud Framed Wall Assembly, Per Arch.
2. Weather & Air Barrier, Per Arch.
3. Envel Mounting Extrusion, Continuous
4. Envel Shop Applied Clip - Location & Number Determined By Calculations
5. Clip Attachment Anchor
6. Leveling Bolt/Fixing Anchor - Fix (1) Clip Per Panel In Bed Of Sealant
7. Fastener Per Schedule - See Sheet F01
8. 5/8" Envel Panel, Flat Or Textured Finish
9. n/a
10. Insulation, Thickness & Type Per Arch.
11. Vertical Aluminum Sub-girt
12. n/a
13. n/a
14. n/a
15. n/a
16. 1/4" Shim



System:

SYSTEM: CONCEALED FASTENER
CLADDING: ENVEL UHPC RAINSCREEN

ENVEL UHPC RAINSCREEN

Concealed Fastener

Sheet Title: Soffit Return		
Issue Date: 4/7/20	File Name: 000-D08	
Scale: 3" = 1'-0"	Sheet: D08	



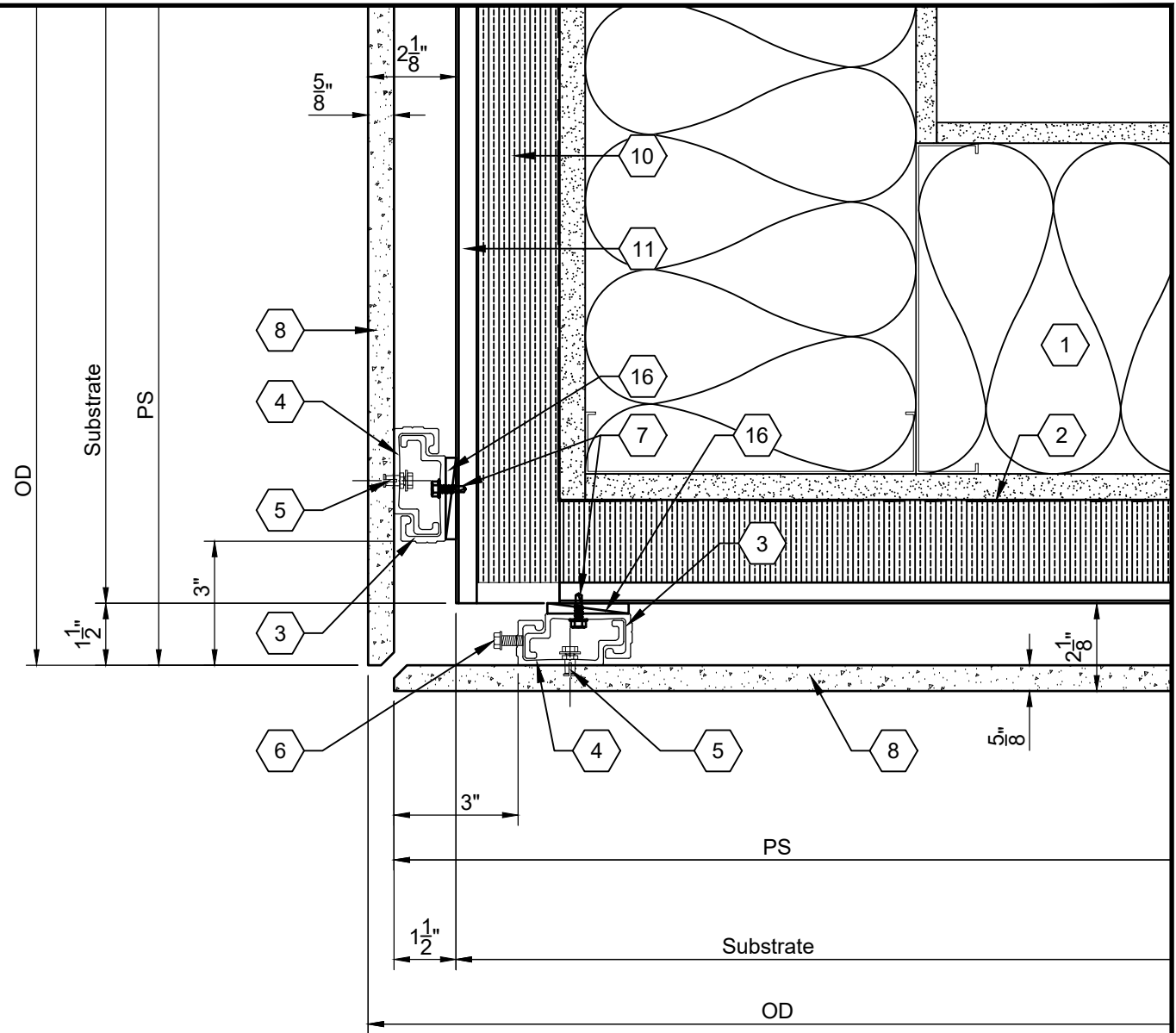
<http://www.envelfacade.com>

sales@envelfacade.com



DRAWING KEYNOTES

1. Stud Framed Wall Assembly, Per Arch.
2. Weather & Air Barrier, Per Arch.
3. Envel Mounting Extrusion, Continuous
4. Envel Shop Applied Clip - Location & Number Determined By Calculations
5. Clip Attachment Anchor
6. Leveling Bolt/Fixing Anchor - Fix (1) Clip Per Panel In Bed Of Sealant
7. Fastener Per Schedule - See Sheet F01
8. 5/8" Envel Panel, Flat Or Textured Finish
9. n/a
10. Insulation, Thickness & Type Per Arch.
11. Vertical Aluminum Sub-girt
12. n/a
13. n/a
14. n/a
15. n/a
16. 1/4" Shim



System:

SYSTEM: CONCEALED FASTENER
CLADDING: ENVEL UHPC RAINSCREEN

ENVEL UHPC RAINSCREEN

Concealed Fastener

Sheet Title: **Soffit Return (Quirk Mitered Corners)**

Issue Date: **4/7/20**

File Name: **000-D08A**

Scale: **3" = 1'-0"**

Sheet: **D08A**



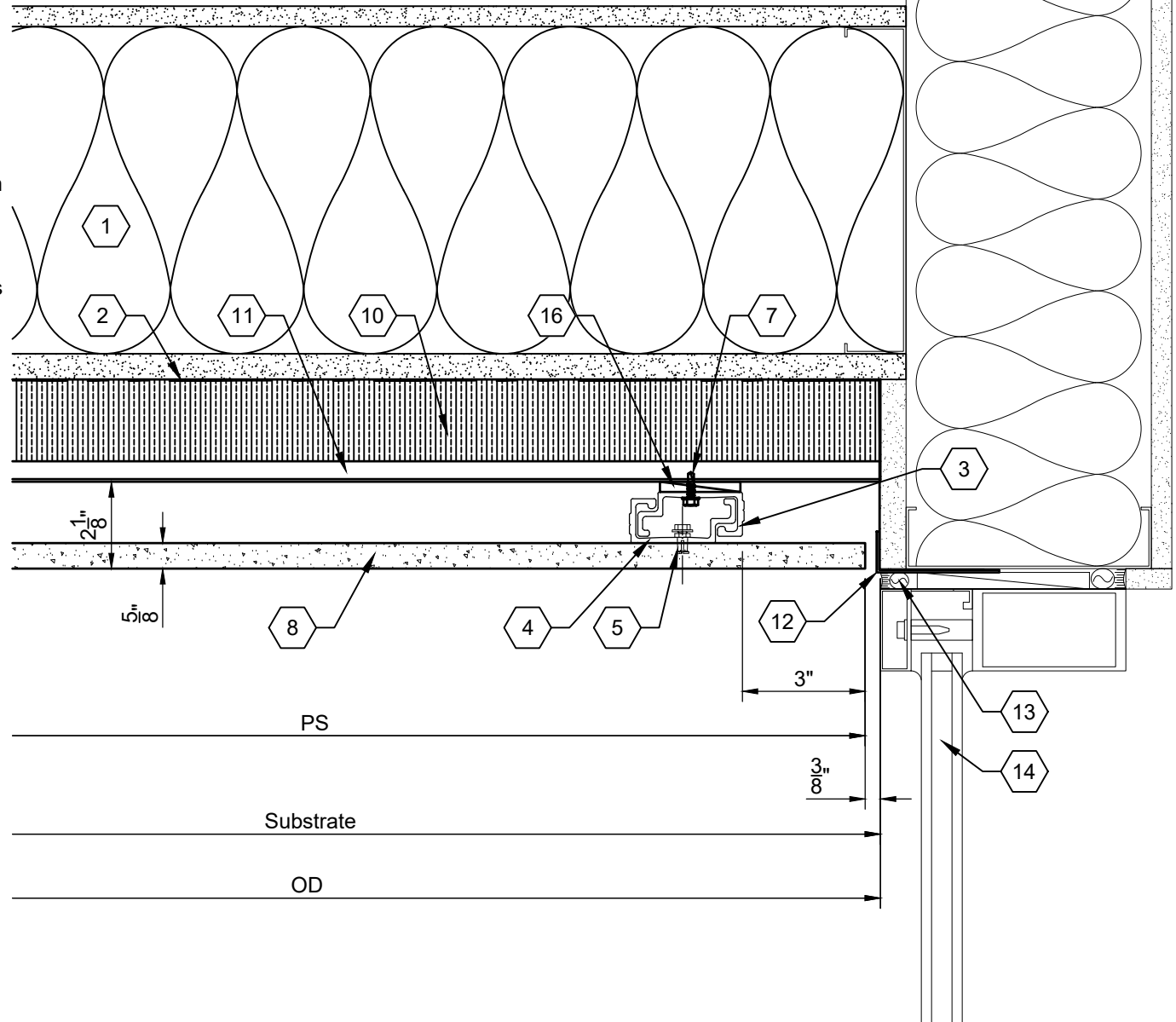
<http://www.envelfacade.com>

sales@envelfacade.com



DRAWING KEYNOTES

1. Stud Framed Wall Assembly, Per Arch.
2. Weather & Air Barrier, Per Arch.
3. Envel Mounting Extrusion, Continuous
4. Envel Shop Applied Clip - Location & Number Determined By Calculations
5. Clip Attachment Anchor
6. n/a
7. Fastener Per Schedule - See Sheet F01
8. 5/8" Envel Panel, Flat Or Textured Finish
9. n/a
10. Insulation, Thickness & Type Per Arch.
11. Vertical Aluminum Sub-girt
12. 1"x3"x.063 Angle, Continuous, By Others
13. Sealant & Backer Rod, By Others
14. Glazing System, By Others
15. n/a
16. 1/4" Shim



System:

SYSTEM: CONCEALED FASTENER
CLADDING: ENVEL UHPC RAINSCREEN

ENVEL UHPC RAINSCREEN

Concealed Fastener

Sheet Title: **Soffit Return To Glazing Head**

Issue Date: **4/7/20**

File Name: **000-D09**

Scale: **3" = 1'-0"**

Sheet: **D09**



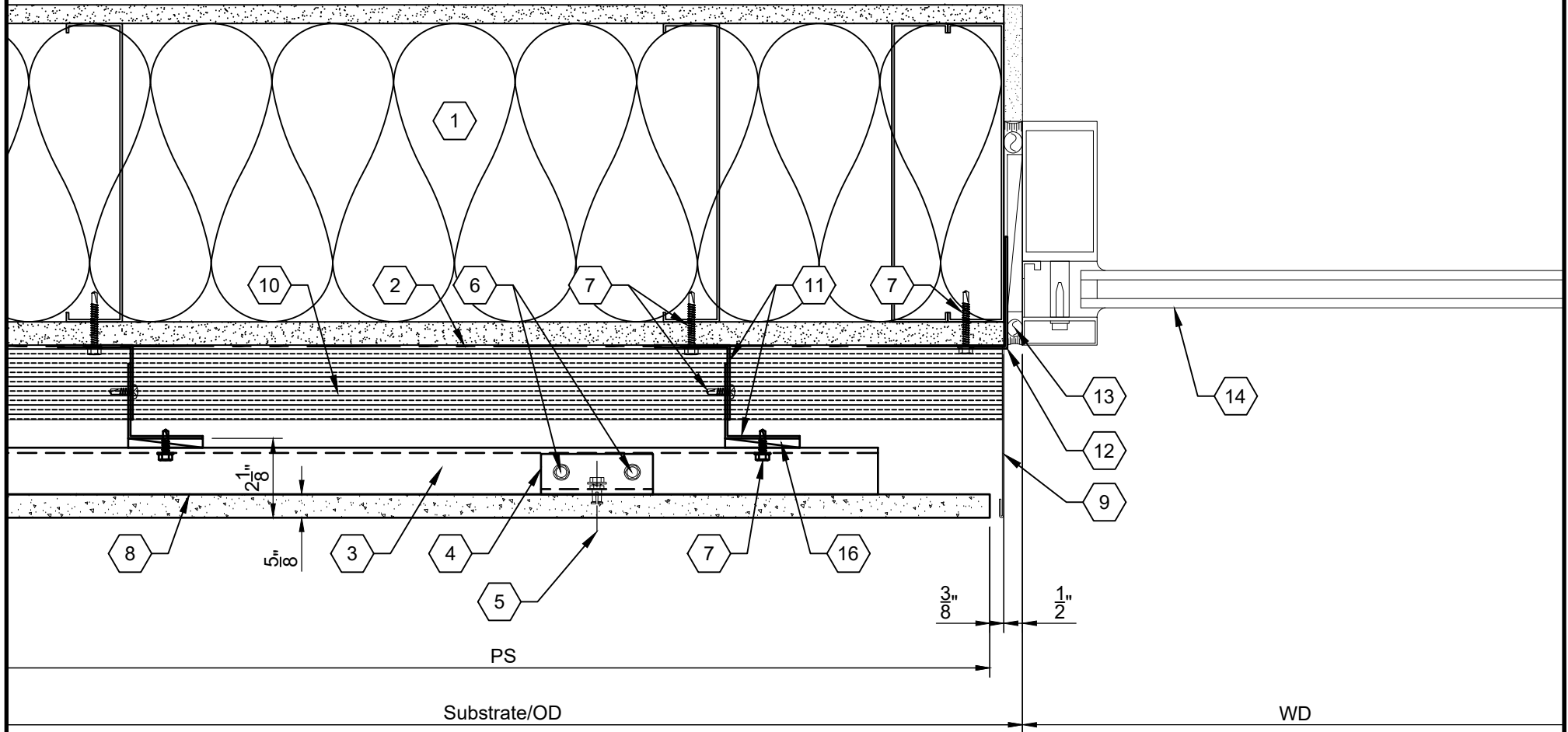
<http://www.envelfacade.com>

sales@envelfacade.com



DRAWING KEYNOTES

1. Stud Framed Wall Assembly, Per Arch.
2. Weather & Air Barrier, Per Arch.
3. Envel Mounting Extrusion, Continuous
4. Envel Shop Applied Clip - Location & Number Determined By Calculations
5. n/a
6. n/a
7. Fastener Per Schedule - See Sheet F01
8. 5/8" Envel Panel, Flat Or Textured Finish
9. Sheet Metal Trim, By Others
10. Insulation, Thickness & Type Per Arch.
11. Vertical Aluminum Sub-girt
12. 1"x3"x.063 Angle, Continuous, By Others
13. Sealant & Backer Rod, By Others
14. Glazing System, By Others
15. n/a
16. 1/4" Shim



System:

SYSTEM: CONCEALED FASTENER
CLADDING: ENVEL UHPC RAINSCREEN

ENVEL UHPC RAINSCREEN

Concealed Fastener

Sheet Title: Typical Glazing Jamb		
Issue Date:	4/7/20	File Name: 000-D10
Scale:	3" = 1'-0"	Sheet: D10



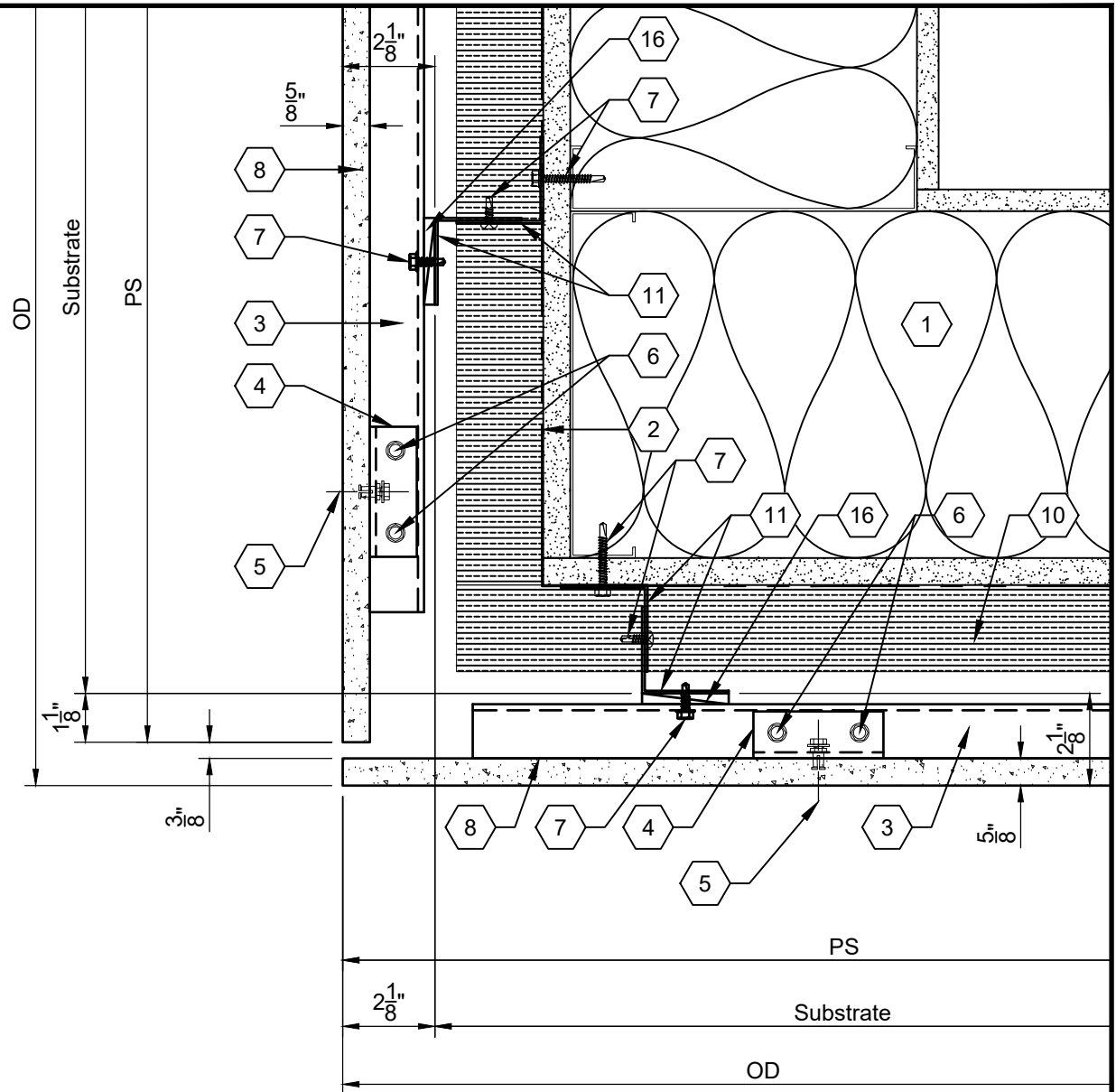
<http://www.envelfacade.com>

sales@envelfacade.com



DRAWING KEYNOTES

1. Stud Framed Wall Assembly, Per Arch.
2. Weather & Air Barrier, Per Arch.
3. Envel Mounting Extrusion, Continuous
4. Envel Shop Applied Clip - Location & Number Determined By Calculations
5. n/a
6. n/a
7. Fastener Per Schedule - See Sheet F01
8. 5/8" Envel Panel, Flat Or Textured Finish
9. n/a
10. Insulation, Thickness & Type Per Arch.
11. Vertical Aluminum Sub-girt
12. n/a
13. n/a
14. n/a
15. n/a
16. 1/4" Shim



System:

SYSTEM: CONCEALED FASTENER
CLADDING: ENVEL UHPC RAINSCREEN

ENVEL UHPC RAINSCREEN

Concealed Fastener

Sheet Title: Outside Corner - Plan View		
Issue Date:	4/7/20	File Name: 000-D11
Scale:	3" = 1'-0"	Sheet: D11



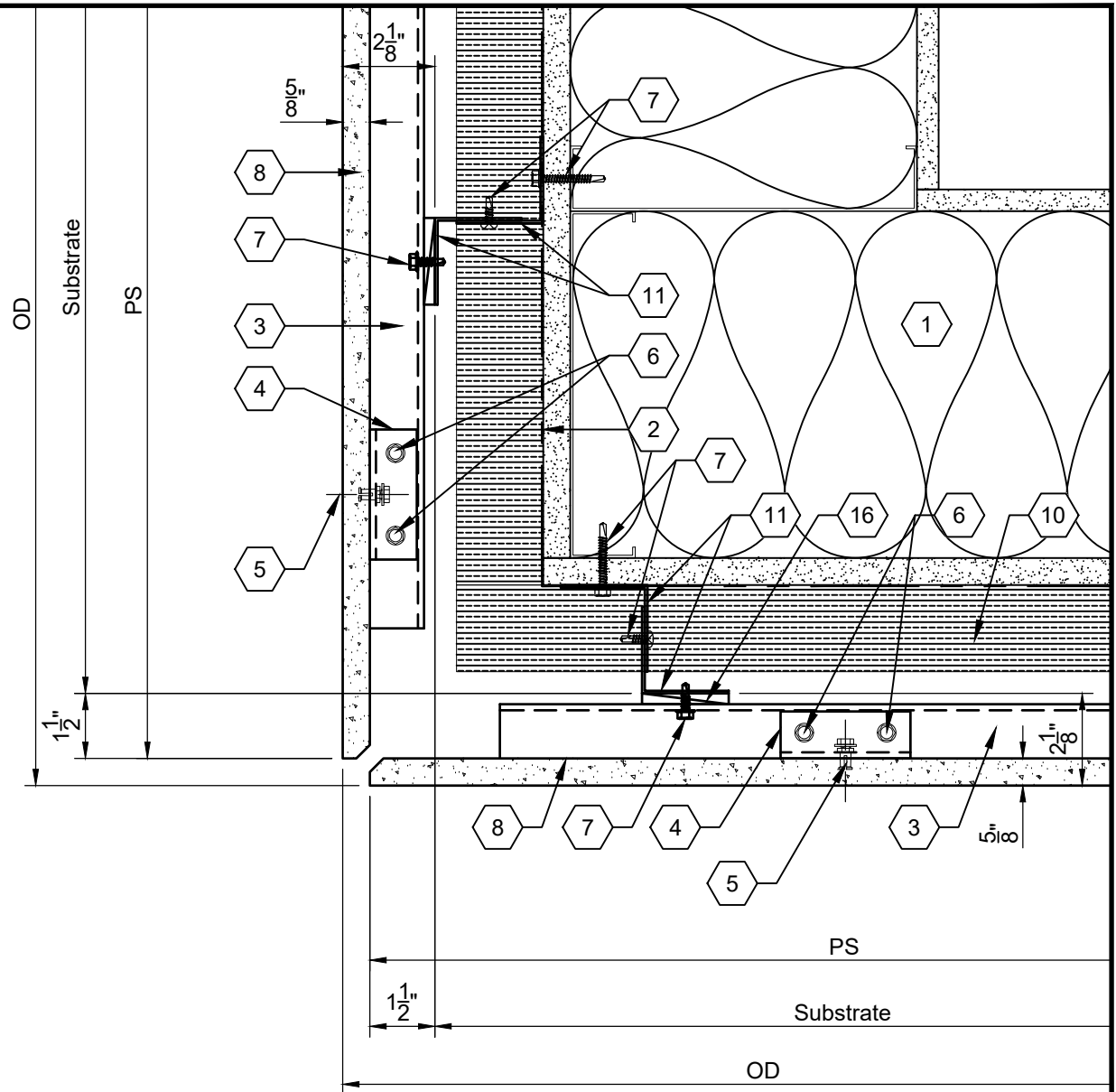
<http://www.envelfacade.com>

sales@envelfacade.com



DRAWING KEYNOTES

1. Stud Framed Wall Assembly, Per Arch.
2. Weather & Air Barrier, Per Arch.
3. Envel Mounting Extrusion, Continuous
4. Envel Shop Applied Clip - Location & Number Determined By Calculations
5. n/a
6. n/a
7. Fastener Per Schedule - See Sheet F01
8. 5/8" Envel Panel, Flat Or Textured Finish
9. n/a
10. Insulation, Thickness & Type Per Arch.
11. Vertical Aluminum Sub-girt
12. n/a
13. n/a
14. n/a
15. n/a
16. 1/4" Shim



System:

SYSTEM: CONCEALED FASTENER
CLADDING: ENVEL UHPC RAINSCREEN

ENVEL UHPC RAINSCREEN

Concealed Fastener

Sheet Title: Outside Corner - Plan View (Quirk Mitered Edge)

Issue Date: 4/7/20

Scale: 3" = 1'-0"

File Name: 000-D11A

Sheet: D11A



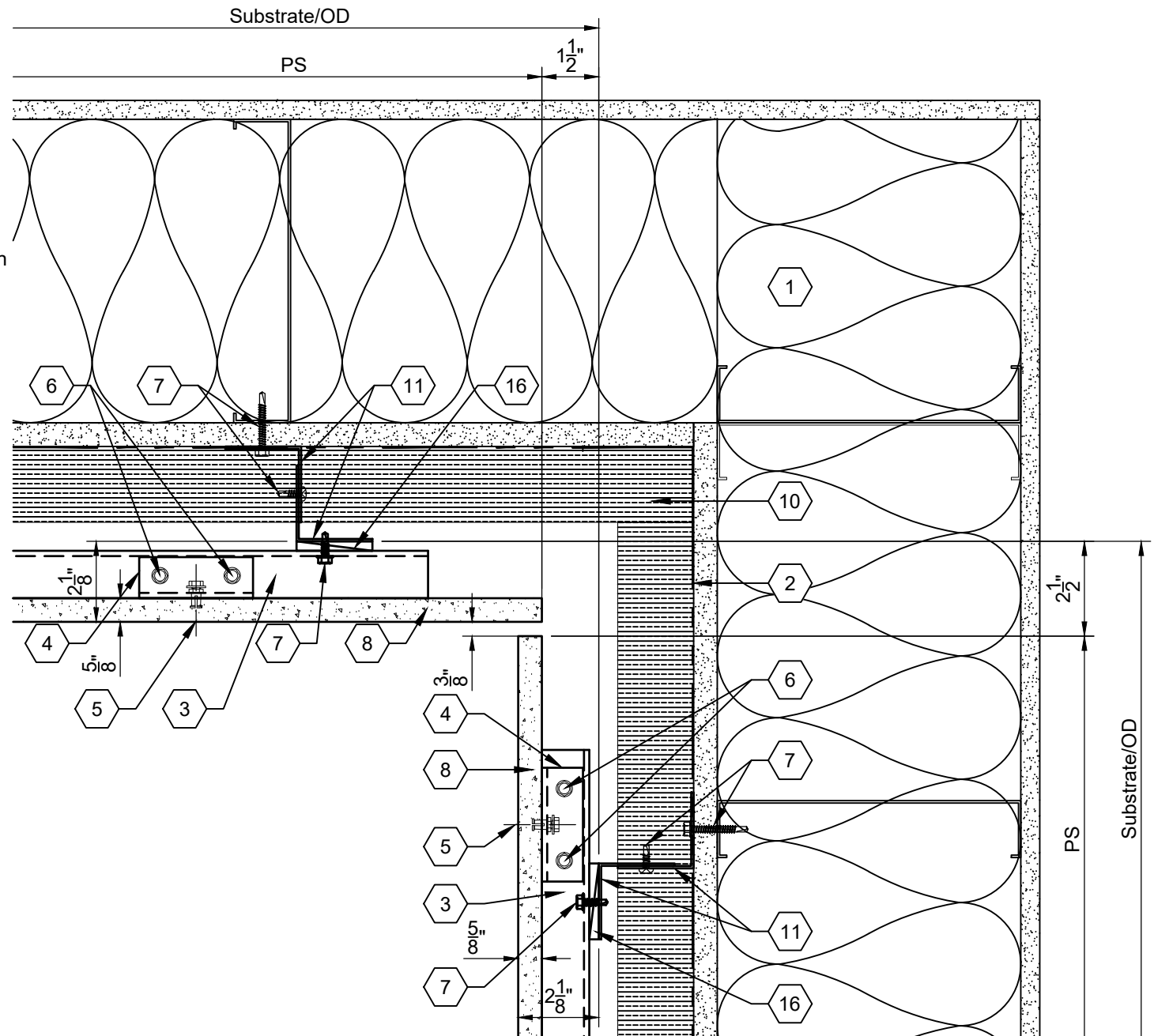
<http://www.envelfacade.com>

sales@envelfacade.com



DRAWING KEYNOTES

1. Stud Framed Wall Assembly, Per Arch.
2. Weather & Air Barrier, Per Arch.
3. Envel Mounting Extrusion, Continuous
4. Envel Shop Applied Clip - Location & Number Determined By Calculations
5. n/a
6. n/a
7. Fastener Per Schedule - See Sheet F01
8. 5/8" Envel Panel, Flat Or Textured Finish
9. n/a
10. Insulation, Thickness & Type Per Arch.
11. Vertical Aluminum Sub-girt
12. n/a
13. n/a
14. n/a
15. n/a
16. 1/4" Shim



System:

SYSTEM: CONCEALED FASTENER
CLADDING: ENVEL UHPC RAINSCREEN

ENVEL UHPC RAINSCREEN

Concealed Fastener

Sheet Title:

Inside Corner - Plan View

Issue Date:

4/7/20

File Name:

000-D12

Scale:

3" = 1'-0"

Sheet:

D12



<http://www.envelfacade.com>

sales@envelfacade.com