

# Envel Panel System

## PROMOTIONAL DETAILS

### SHEET INDEX

L01	Cover Sheet
F01	Fastener Schedule
E01	Mock Elevation
D01	Typical Upper Termination
D01A	Upper Termination @ Coping
D02	Typical Horizontal Joint
D02A	Horizontal (Mid-Panel)
D03	Typical Glazing Head
D04	Typical Glazing Sill
D05	Typical Panel Base (Exposed)
D05A	Typical Panel Base
D06	Jamb Termination
D06A	Jamb Termination (Exposed)
D07	Typical Vertical Joint
D07A	Vertical (Mid-Panel)
D08	Soffit Return
D09	Soffit Return To Glazing Head
D10	Typical Glazing Jamb
D11	Outside Corner - Plan View
D12	Inside Corner - Plan View

System:

SYSTEM: EXPOSED FASTENER  
CLADDING: ENVEL UHPC RAINSCREEN

**ENVEL UHPC RAINSCREEN**  
Exposed Fastener


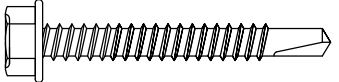
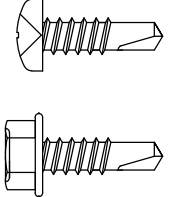
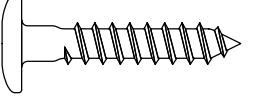
Sheet Title:	Cover Sheet	
Issue Date:	4/7/20	File Name: 000-L01
Scale:	Full	Sheet: L01

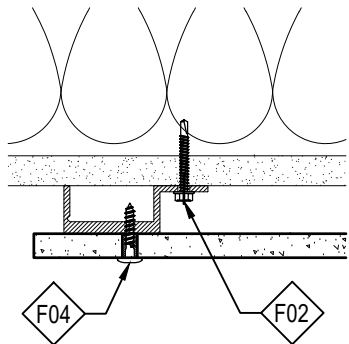


<http://www.envelfacade.com>

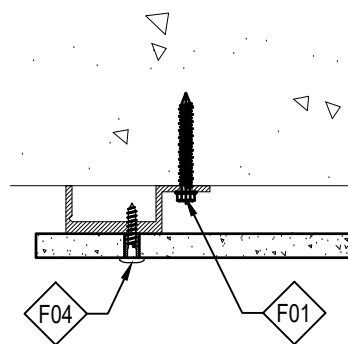
[sales@envelfacade.com](mailto:sales@envelfacade.com)

# ENVEL TYPICAL FASTENER SCHEDULE

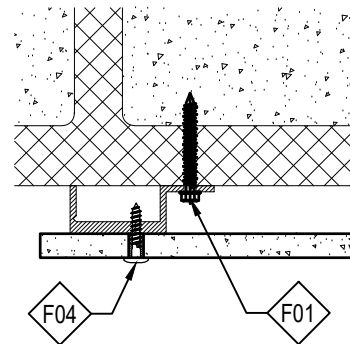
F01	#12 Tapcon		Use when fastening into concrete or masonry conditions. Minimum of $1\frac{3}{4}$ " embedment and minimum of 2" from any edge to avoid structural blowout.
F02	10-16x $1\frac{1}{2}$ " HWH #3 12-14x $1\frac{1}{2}$ " HWH #2		Use when fastening into structural steel and metal studs with different substrate faces (i.e.. gypsum or plywood). Minimum of 2 threads must penetrate back face of structural member.
F03	10-16x $\frac{5}{8}$ " Pan #3 10-24x $\frac{5}{8}$ " HWH #2		Use when fastening into structural steel and metal studs with no substrate faces. Minimum of 2 threads must penetrate back face of structural member.
F04	Painted SS Fastener		



STEEL STUD



CONCRETE



CMU BLOCK

System:

SYSTEM: EXPOSED FASTENER  
CLADDING: ENVEL UHPC RAINSCREEN

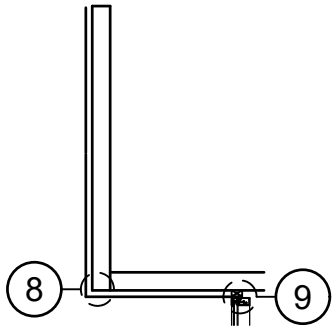
**ENVEL UHPC RAINSCREEN**  
Exposed Fastener

Sheet Title:	Fastener Schedule	
Issue Date:	4/7/20	File Name: 000-F01
Scale:	Full	Sheet: F01

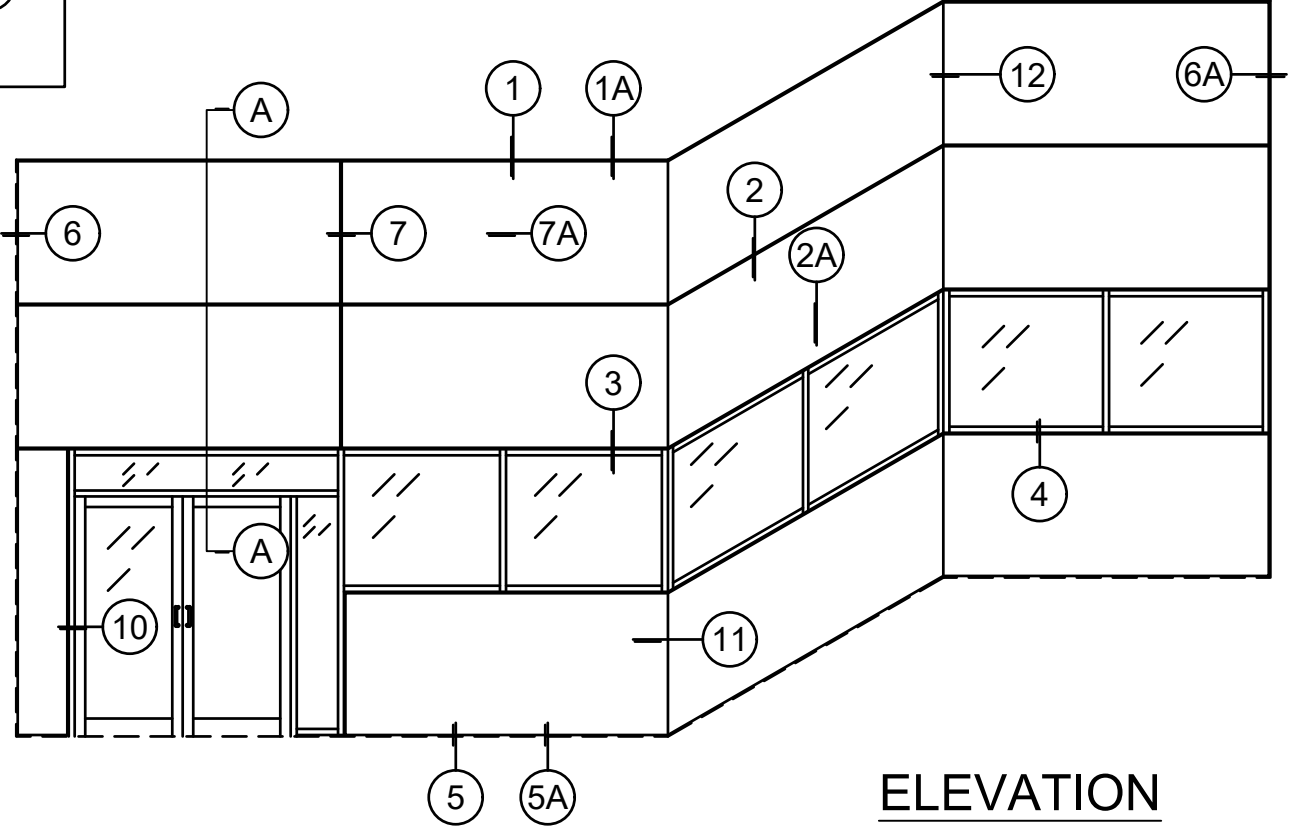


<http://www.envelfacade.com>

[sales@envelfacade.com](mailto:sales@envelfacade.com)



SECTION A-A



ELEVATION

System:  
**SYSTEM: EXPOSED FASTENER**  
**CLADDING: ENVEL UHPC RAINSCREEN**

# **ENVEL UHPC RAINSCREEN** Exposed Fastener

Sheet Title:	Mock Elevation	
Issue Date:	4/7/20	File Name: 000-E01
Scale:	NTS	Sheet: E01



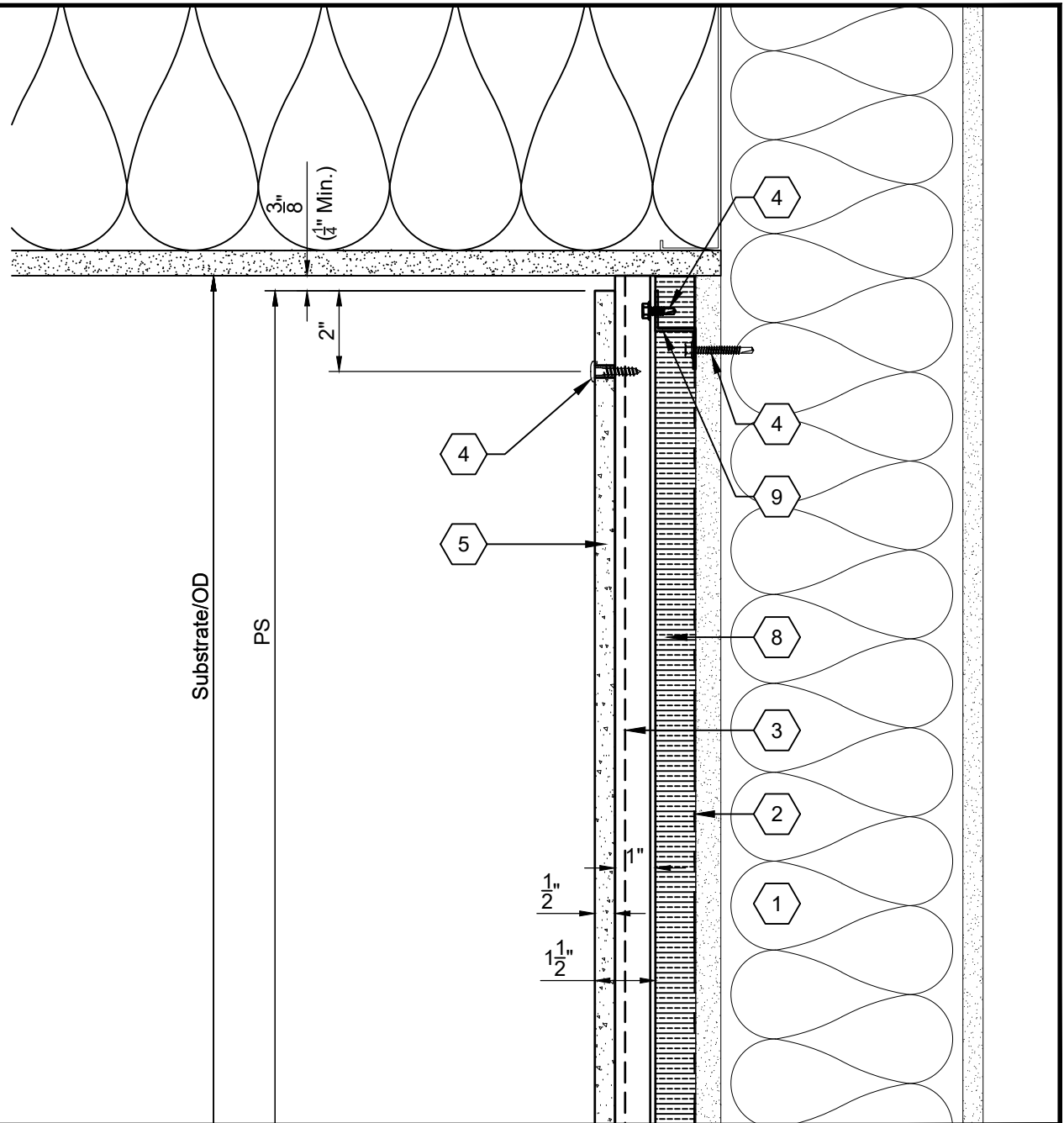
<http://www.envelfacade.com>

[sales@envelfacade.com](mailto:sales@envelfacade.com)



## DRAWING KEYNOTES

1. Stud Framed Wall Assembly, Per Arch.
2. Weather & Air Barrier, Per Arch.
3. J-Channel
4. Fastener Per Schedule - See Sheet F01
5.  $\frac{1}{2}$ " Envel Panel, Flat Or Textured Finish
6. n/a
7. n/a
8. Insulation, Thickness & Type Per Arch.
9. Thermally Broken Insulation Girt



System:

SYSTEM: EXPOSED FASTENER  
CLADDING: ENVEL UHPC RAINSCREEN

## ENVEL UHPC RAINSCREEN

Exposed Fastener

Sheet Title: Typical Upper Termination

Issue Date: 4/7/20

Scale: 3" = 1'-0"

File Name: 000-D01

Sheet: D01



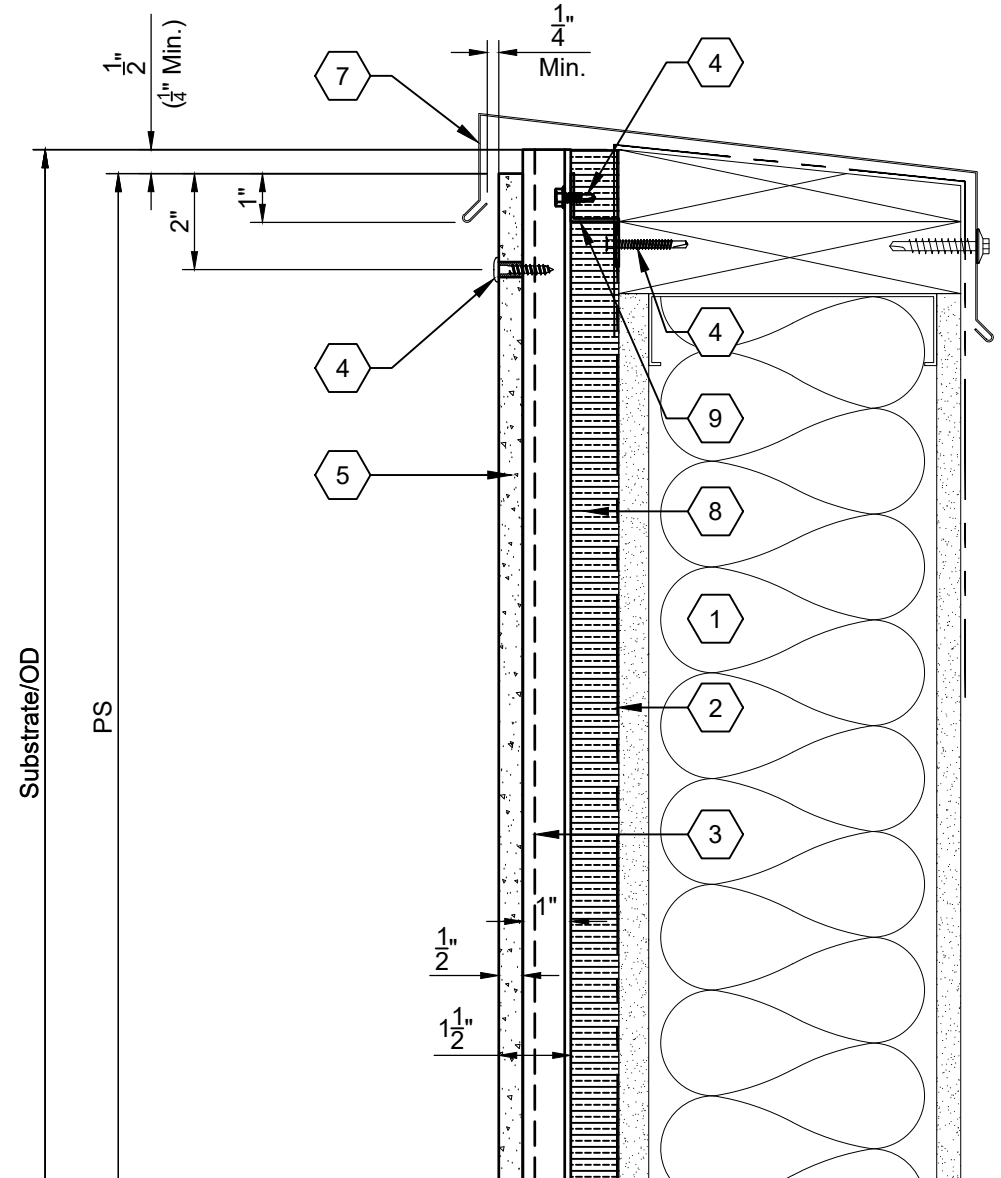
<http://www.envelfacade.com>

[sales@envelfacade.com](mailto:sales@envelfacade.com)



## DRAWING KEYNOTES

1. Stud Framed Wall Assembly, Per Arch.
2. Weather & Air Barrier, Per Arch.
3. J-Channel
4. Fastener Per Schedule - See Sheet F01
5.  $\frac{1}{2}$ " Envel Panel, Flat Or Textured Finish
6. n/a
7. Sheet Metal Coping, By Others
8. Insulation, Thickness & Type Per Arch.
9. Thermally Broken Insulation Girt



System:

SYSTEM: EXPOSED FASTENER  
CLADDING: ENVEL UHPC RAINSCREEN

## ENVEL UHPC RAINSCREEN

Exposed Fastener

Sheet Title: Upper Termination @ Coping

Issue Date: 4/7/20

File Name: 000-D01A

Scale: 3" = 1'-0"

Sheet: D01A

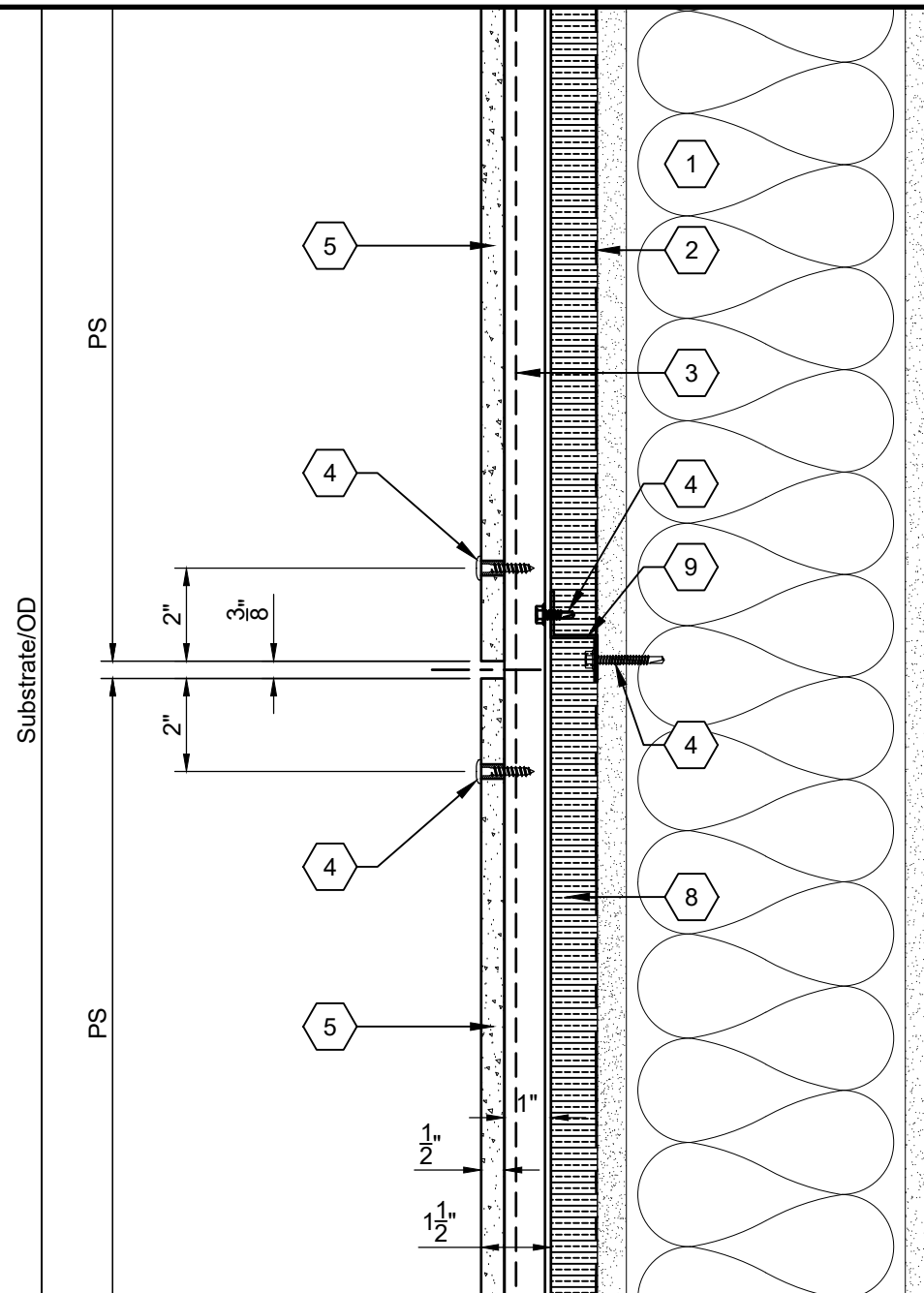


<http://www.envelfacade.com>

[sales@envelfacade.com](mailto:sales@envelfacade.com)



1. Stud Framed Wall Assembly, Per Arch.
2. Weather & Air Barrier, Per Arch.
3. J-Channel
4. Fastener Per Schedule - See Sheet F01
5.  $\frac{1}{2}$ " Envel Panel, Flat Or Textured Finish
6. n/a
7. n/a
8. Insulation, Thickness & Type Per Arch.
9. Thermally Broken Insulation Girt



SYSTEM: EXPOSED FASTENER  
CLADDING: ENVEL UHPC RAINSCREEN

## ENVEL UHPC RAINSCREEN

### Exposed Fastener

Sheet Title: **Typical Horizontal Joint**

Issue Date: **4/7/20**

File Name: 000-D02

Scale: **3" = 1'-0"**

Sheet: **D02**



<http://www.envelfacade.com>

[sales@envelfacade.com](mailto:sales@envelfacade.com)

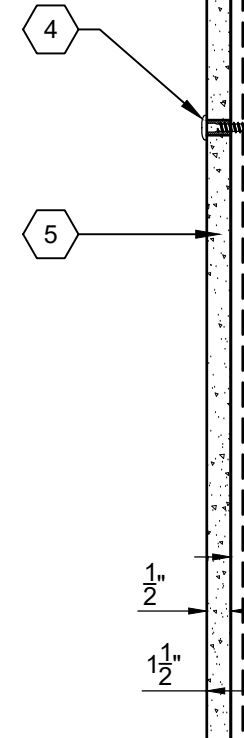


## DRAWING KEYNOTES

1. Stud Framed Wall Assembly, Per Arch.
2. Weather & Air Barrier, Per Arch.
3. J-Channel
4. Fastener Per Schedule - See Sheet F01
5.  $\frac{1}{2}$ " Envel Panel, Flat Or Textured Finish
6. n/a
7. n/a
8. Insulation, Thickness & Type Per Arch.
9. Thermally Broken Insulation Girt

Substrate/OD

PS



System:

SYSTEM: EXPOSED FASTENER  
CLADDING: ENVEL UHPC RAINSCREEN

## ENVEL UHPC RAINSCREEN

Exposed Fastener

Sheet Title:

Horizontal (Mid-Panel)

Issue Date:

4/7/20

File Name:

000-D02A

Scale:

3" = 1'-0"

Sheet:

D02A



<http://www.envelfacade.com>

[sales@envelfacade.com](mailto:sales@envelfacade.com)



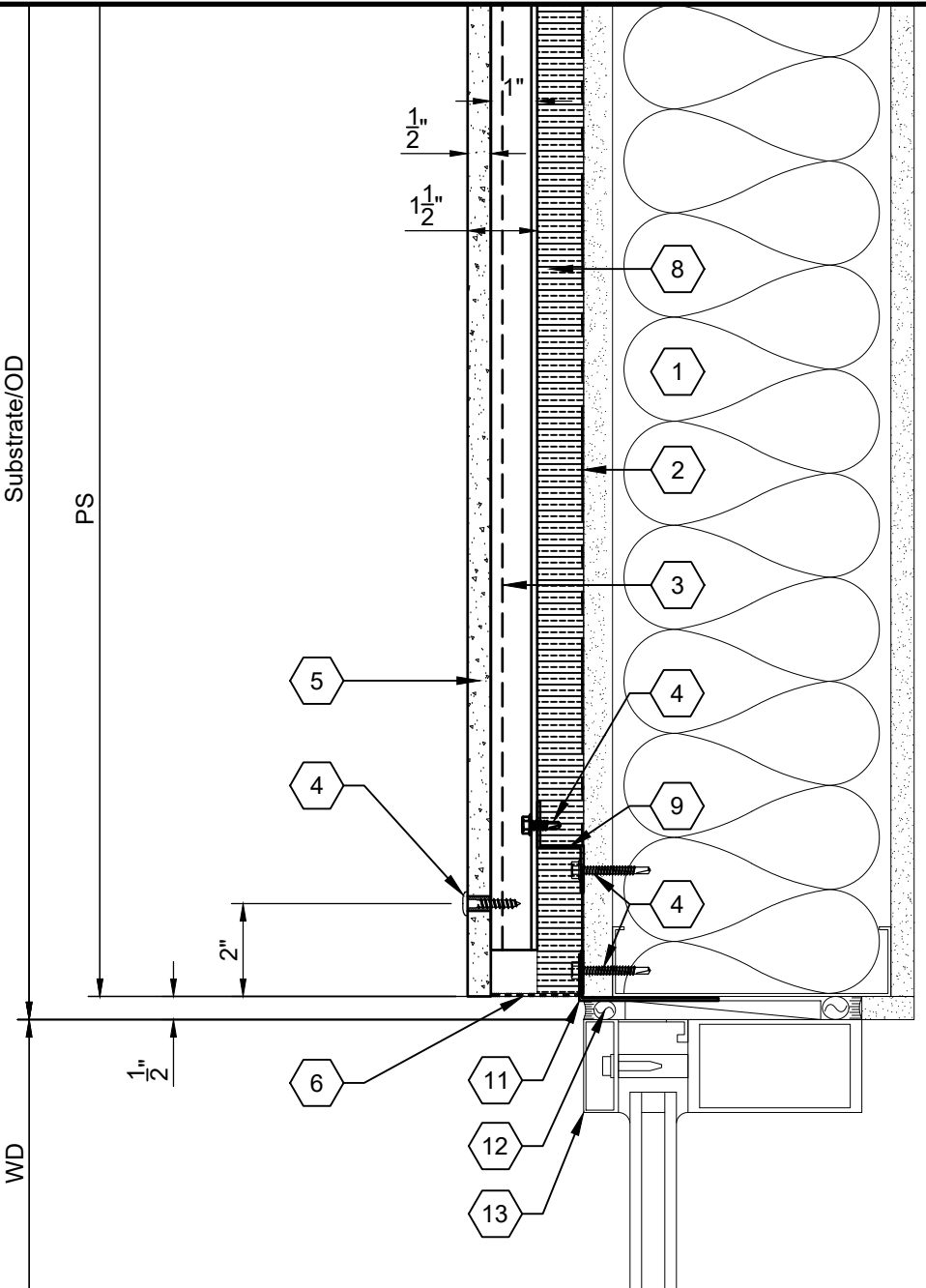
## DRAWING KEYNOTES

1. Stud Framed Wall Assembly, Per Arch.
2. Weather & Air Barrier, Per Arch.
3. J-Channel
4. Fastener Per Schedule - See Sheet F01
5.  $\frac{1}{2}$ " Envel Panel, Flat Or Textured Finish
6. Vent Screen
7. n/a
8. Insulation, Thickness & Type Per Arch.
9. Thermally Broken Insulation Girt
10. n/a
11. 1"x3"x.063 Angle, Continuous, By Others
12. Sealant & Backer Rod, By Others
13. Glazing System, By Others

Substrate/OD

PS

WD



System:

SYSTEM: EXPOSED FASTENER  
CLADDING: ENVEL UHPC RAINSCREEN

## ENVEL UHPC RAINSCREEN

Exposed Fastener

Sheet Title:

Typical Glazing Head

Issue Date:

4/7/20

File Name:

000-D03

Scale:

3" = 1'-0"

Sheet:

D03



<http://www.envelfacade.com>

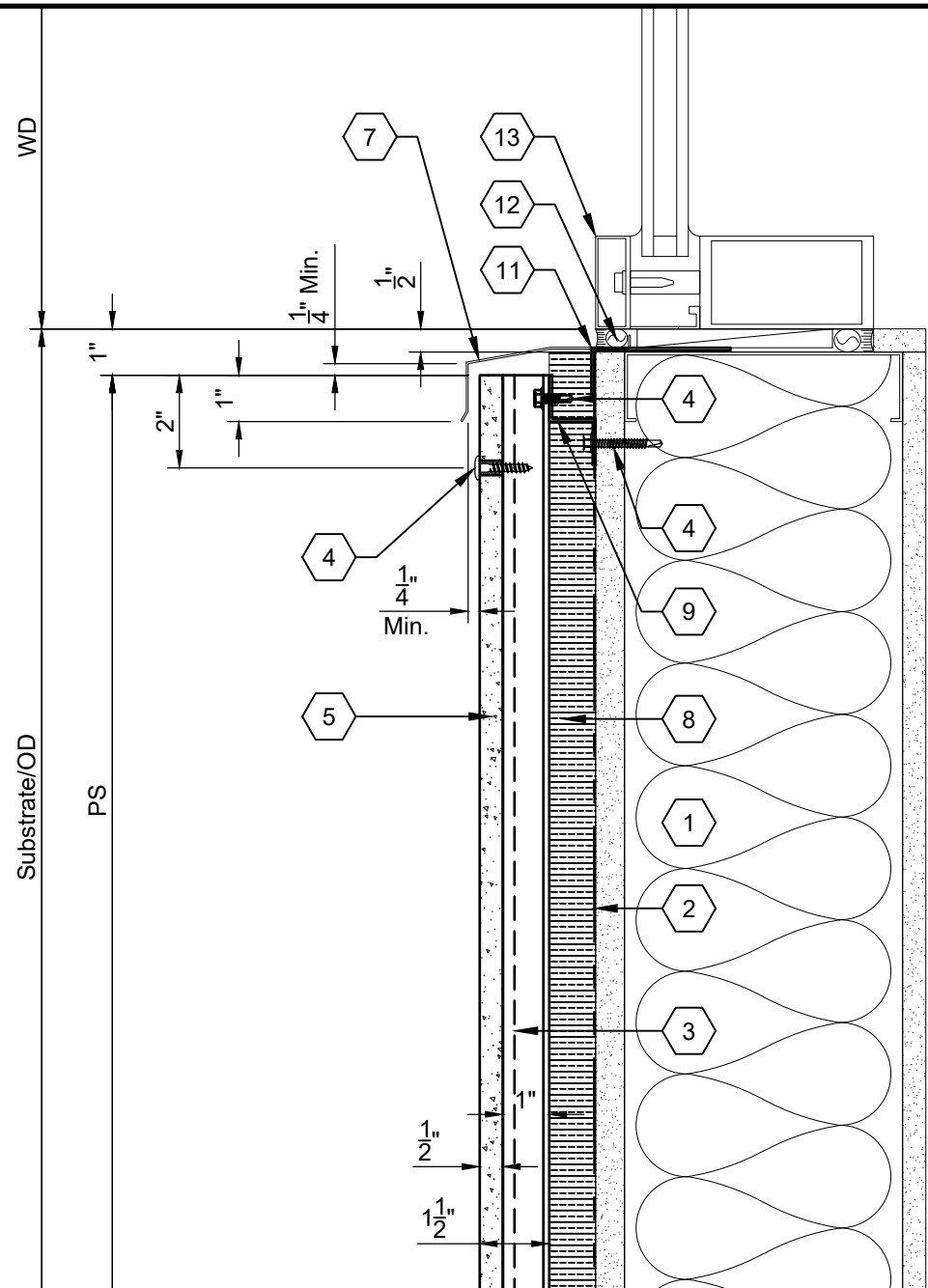
[sales@envelfacade.com](mailto:sales@envelfacade.com)





## DRAWING KEYNOTES

1. Stud Framed Wall Assembly, Per Arch.
2. Weather & Air Barrier, Per Arch.
3. J-Channel
4. Fastener Per Schedule - See Sheet F01
5.  $\frac{1}{2}$ " Envel Panel, Flat Or Textured Finish
6. n/a
7. Sheet Metal Trim/Flashing, By Others
8. Insulation, Thickness & Type Per Arch.
9. Thermally Broken Insulation Girt
10. n/a
11. 1"x3"x.063 Angle, Continuous, By Others
12. Sealant & Backer Rod, By Others
13. Glazing System, By Others



System:

SYSTEM: EXPOSED FASTENER  
CLADDING: ENVEL UHPC RAINSCREEN

## ENVEL UHPC RAINSCREEN

Exposed Fastener

Sheet Title: <b>Typical Glazing Sill</b>		
Issue Date:	4/7/20	File Name: 000-D04
Scale:	3" = 1'-0"	Sheet: D04



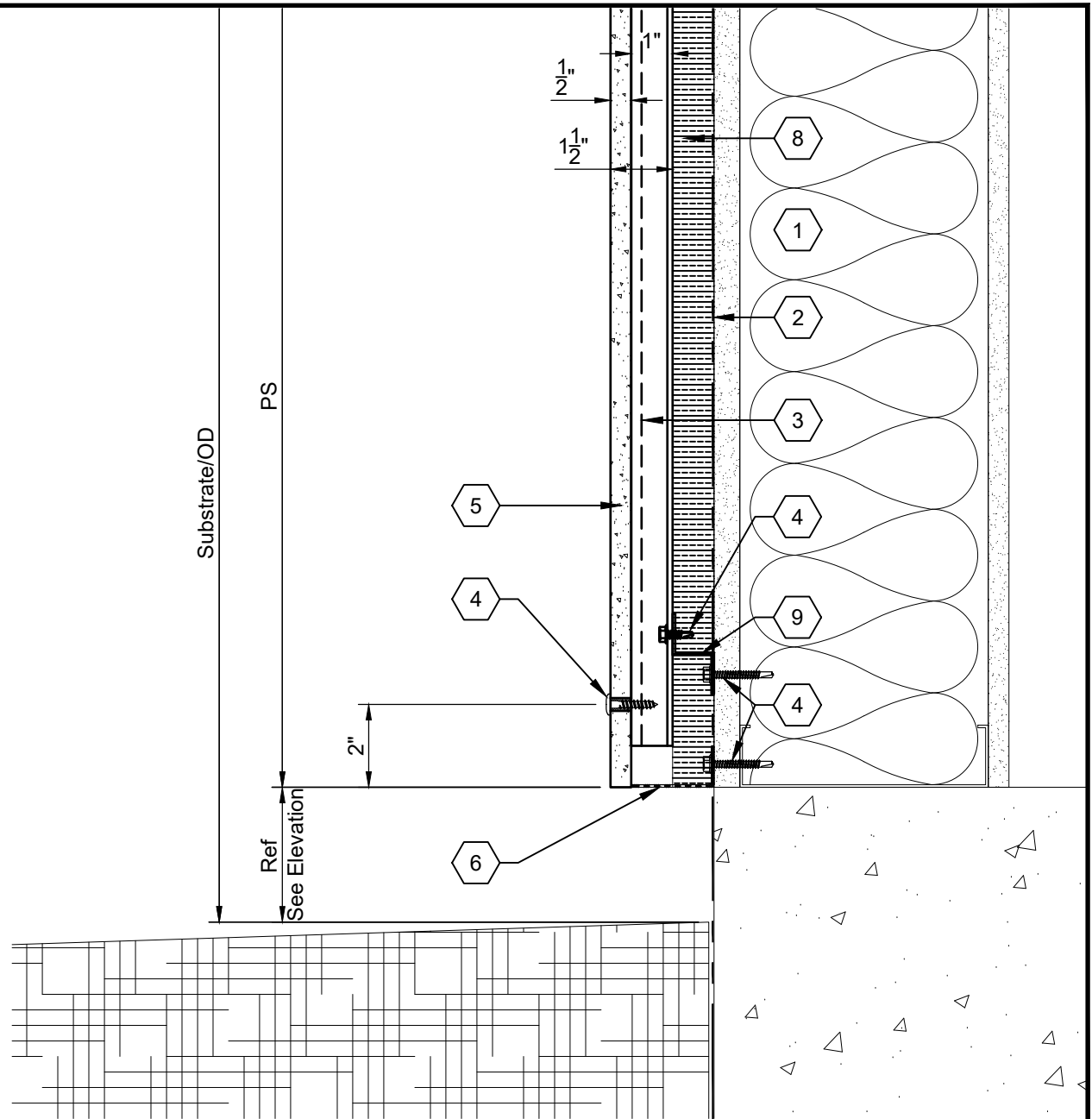
<http://www.enveffacade.com>

[sales@enveffacade.com](mailto:sales@enveffacade.com)



## DRAWING KEYNOTES

1. Stud Framed Wall Assembly, Per Arch.
2. Weather & Air Barrier, Per Arch.
3. J-Channel
4. Fastener Per Schedule - See Sheet F01
5.  $\frac{1}{2}$ " Envel Panel, Flat Or Textured Finish
6. Vent Screen
7. n/a
8. Insulation, Thickness & Type Per Arch.
9. Thermally Broken Insulation Girt



System:

SYSTEM: EXPOSED FASTENER  
CLADDING: ENVEL UHPC RAINSCREEN

## ENVEL UHPC RAINSCREEN

Exposed Fastener

Sheet Title:	Typical Panel Base (Exposed)	
Issue Date:	4/7/20	File Name: 000-D05
Scale:	3" = 1'-0"	Sheet: D05



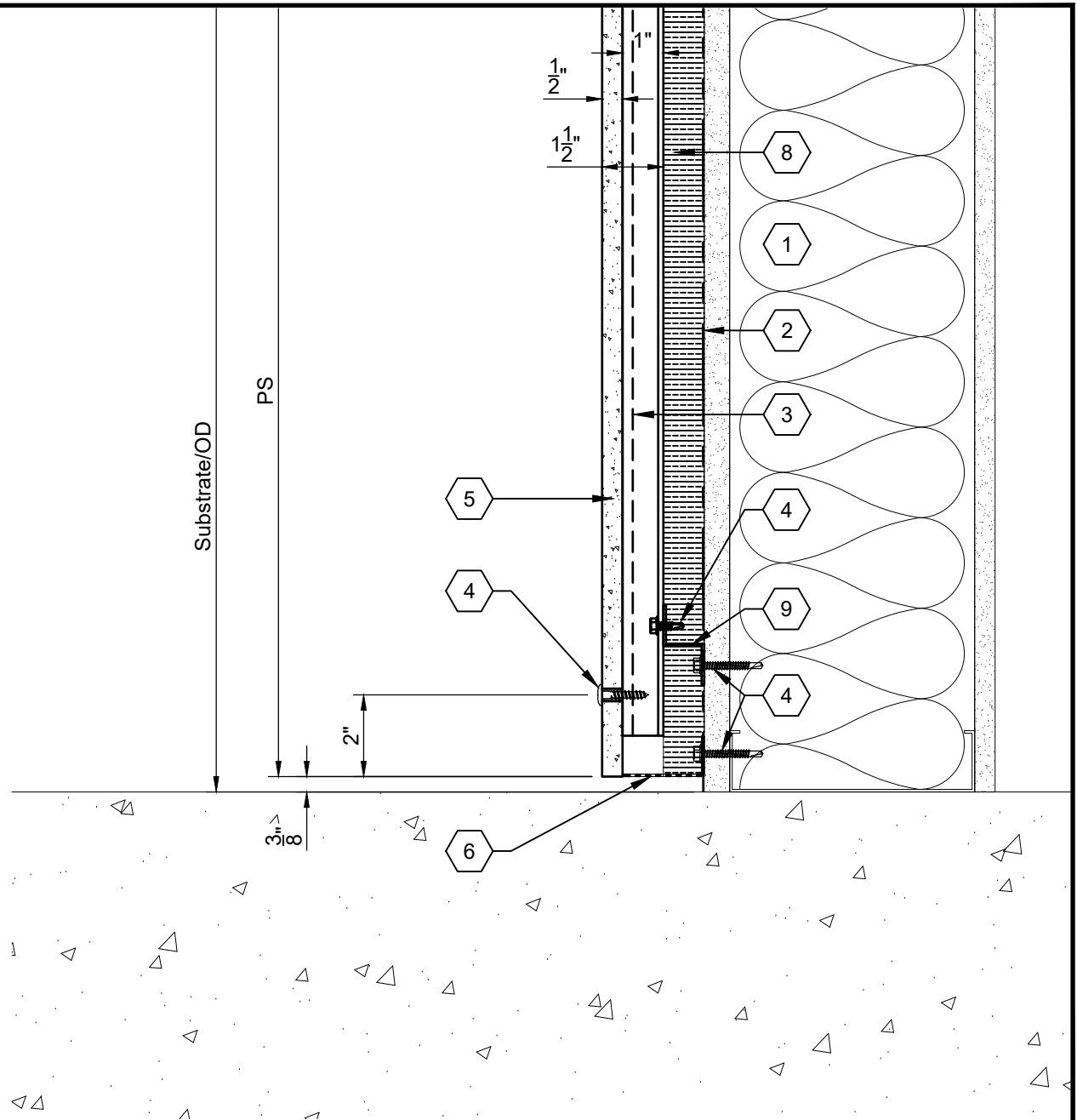
<http://www.envelfacade.com>

[sales@envelfacade.com](mailto:sales@envelfacade.com)



## DRAWING KEYNOTES

1. Stud Framed Wall Assembly, Per Arch.
2. Weather & Air Barrier, Per Arch.
3. J-Channel
4. Fastener Per Schedule - See Sheet F01
5.  $\frac{1}{2}$ " Envel Panel, Flat Or Textured Finish
6. Vent Screen
7. n/a
8. Insulation, Thickness & Type Per Arch.
9. Thermally Broken Insulation Girt



System:

SYSTEM: EXPOSED FASTENER  
CLADDING: ENVEL UHPC RAINSCREEN

## ENVEL UHPC RAINSCREEN

Exposed Fastener

Sheet Title: <b>Typical Panel Base</b>		
Issue Date:	4/7/20	File Name: 000-D05A
Scale:	3" = 1'-0"	Sheet: D05A



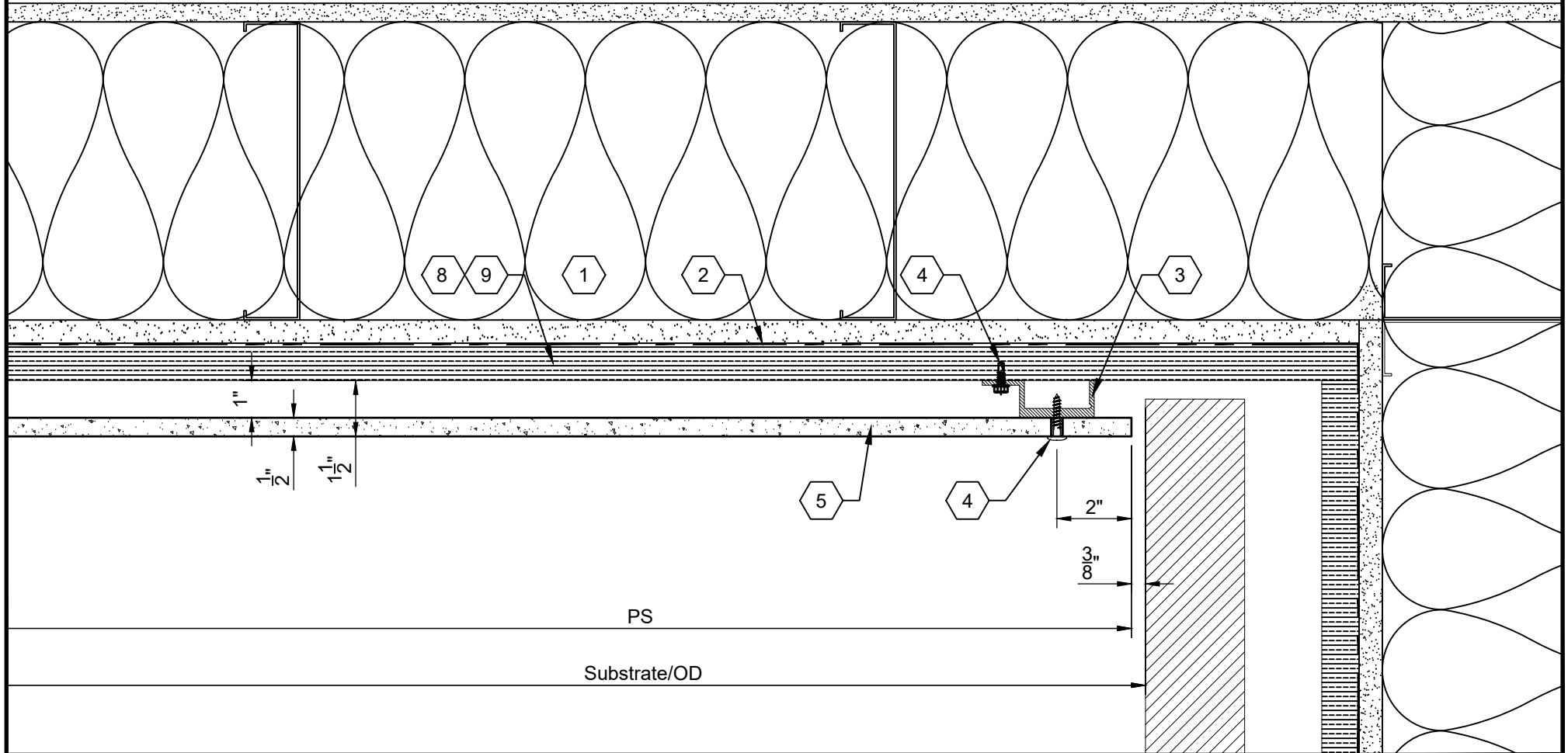
<http://www.envelfacade.com>

[sales@envelfacade.com](mailto:sales@envelfacade.com)



## DRAWING KEYNOTES

1. Stud Framed Wall Assembly, Per Arch.
2. Weather & Air Barrier, Per Arch.
3. J-Channel
4. Fastener Per Schedule - See Sheet F01
5.  $\frac{1}{2}$ " Envel Panel, Flat Or Textured Finish
6. n/a
7. n/a
8. Insulation, Thickness & Type Per Arch.
9. Thermally Broken Insulation Girt



System:

SYSTEM: EXPOSED FASTENER  
CLADDING: ENVEL UHPC RAINSCREEN

## ENVEL UHPC RAINSCREEN

Exposed Fastener

Sheet Title:

Jamb Termination

Issue Date:

4/7/20

File Name:

000-D06

Scale:

3" = 1'-0"

Sheet:

D06



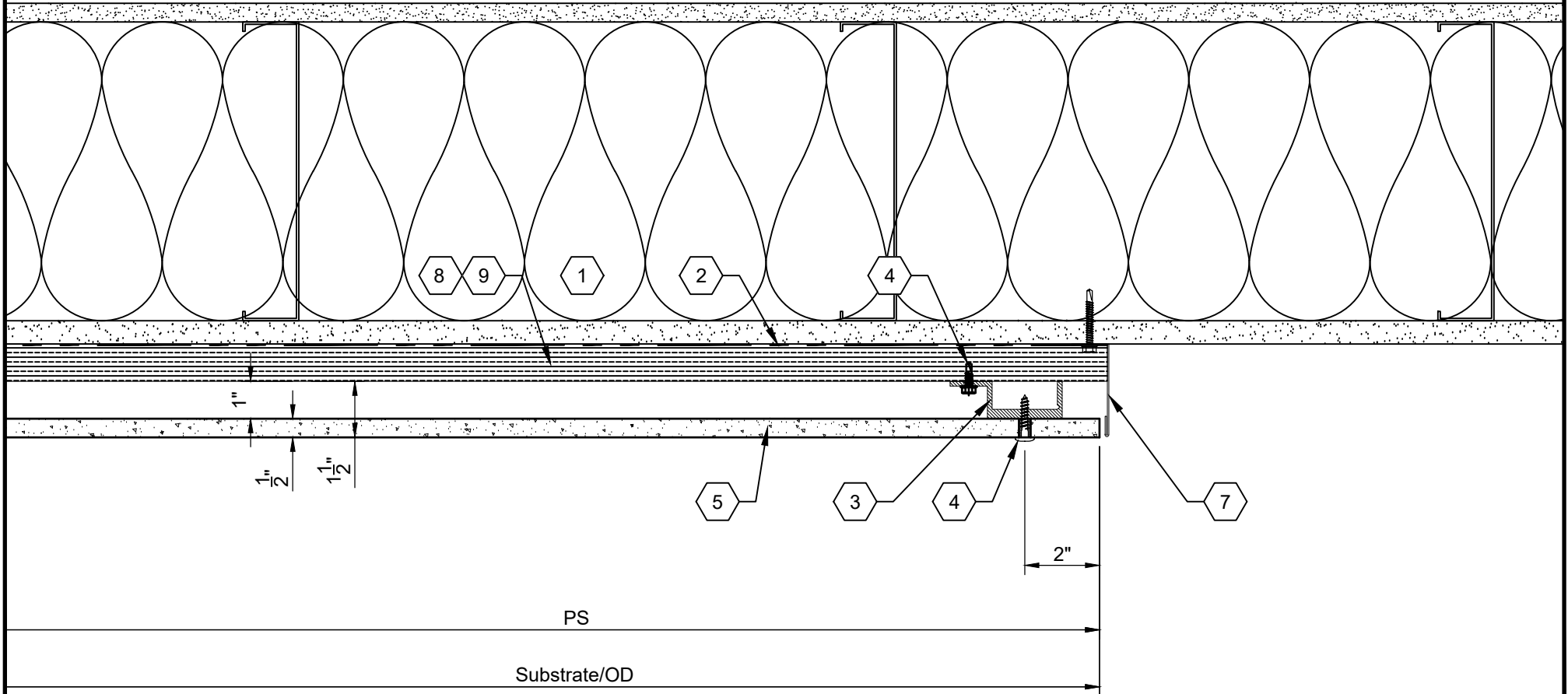
<http://www.envelfacade.com>

[sales@envelfacade.com](mailto:sales@envelfacade.com)



## DRAWING KEYNOTES

1. Stud Framed Wall Assembly, Per Arch.
2. Weather & Air Barrier, Per Arch.
3. J-Channel
4. Fastener Per Schedule - See Sheet F01
5.  $\frac{1}{2}$ " Envel Panel, Flat Or Textured Finish
6. n/a
7. Sheet Metal Trim, By Others
8. Insulation, Thickness & Type Per Arch.
9. Thermally Broken Insulation Girt



System:

SYSTEM: EXPOSED FASTENER  
CLADDING: ENVEL UHPC RAINSCREEN

## ENVEL UHPC RAINSCREEN

Exposed Fastener

Sheet Title: Jamb Termination (Exposed)

Issue Date: 4/7/20

Scale: 3" = 1'-0"

File Name: 000-D06A

Sheet: D06A



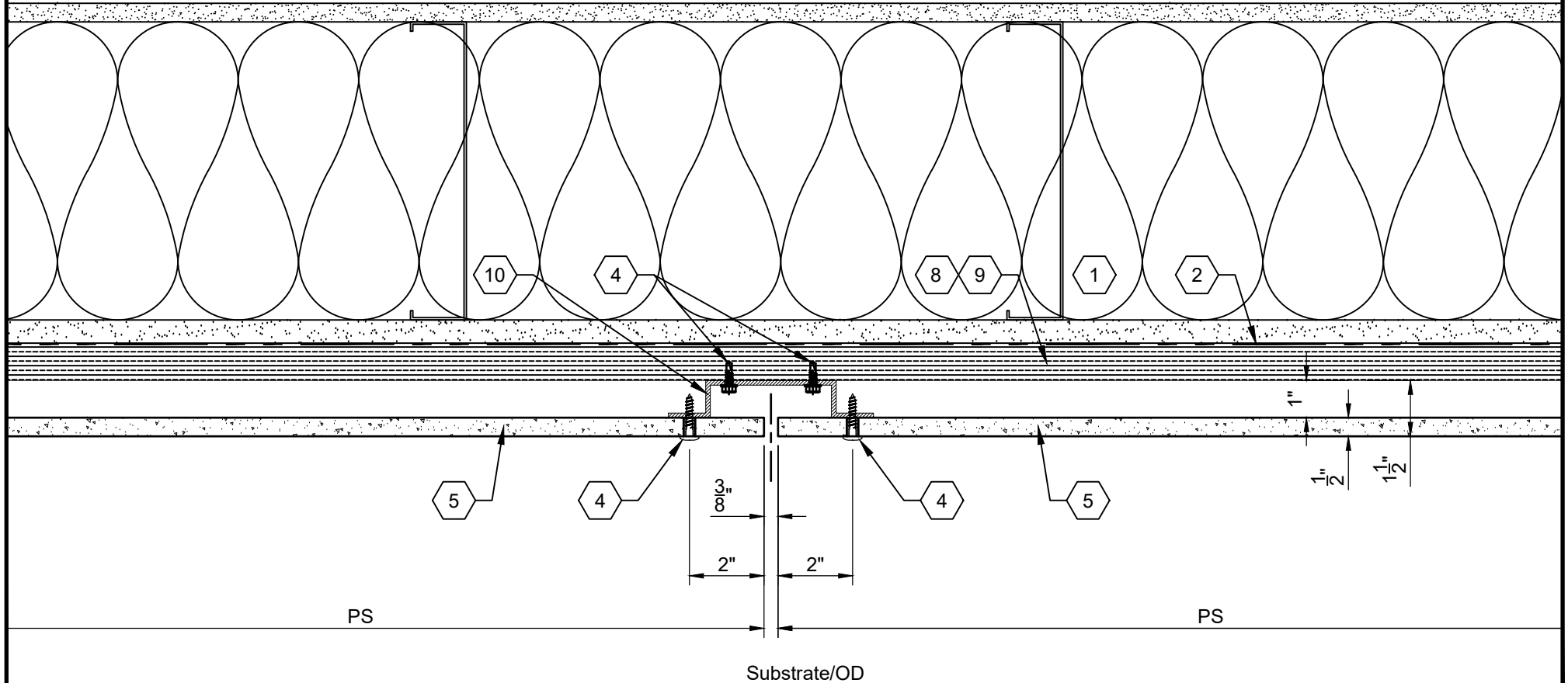
<http://www.envelfacade.com>

[sales@envelfacade.com](mailto:sales@envelfacade.com)



## DRAWING KEYNOTES

1. Stud Framed Wall Assembly, Per Arch.
2. Weather & Air Barrier, Per Arch.
3. n/a
4. Fastener Per Schedule - See Sheet F01
5.  $\frac{1}{2}$ " Envel Panel, Flat Or Textured Finish
6. n/a
7. n/a
8. Insulation, Thickness & Type Per Arch.
9. Thermally Broken Insulation Girt
10. Hat Channel



System:

SYSTEM: EXPOSED FASTENER  
CLADDING: ENVEL UHPC RAINSCREEN

## ENVEL UHPC RAINSCREEN

Exposed Fastener

Sheet Title:	Typical Vertical Joint	
Issue Date:	4/7/20	File Name: 000-D07
Scale:	3" = 1'-0"	Sheet: D07



<http://www.envelfacade.com>

[sales@envelfacade.com](mailto:sales@envelfacade.com)



**DRAWING KEYNOTES**

1. Stud Framed Wall Assembly, Per Arch.

2. Weather & Air Barrier, Per Arch.

3. J-Channel

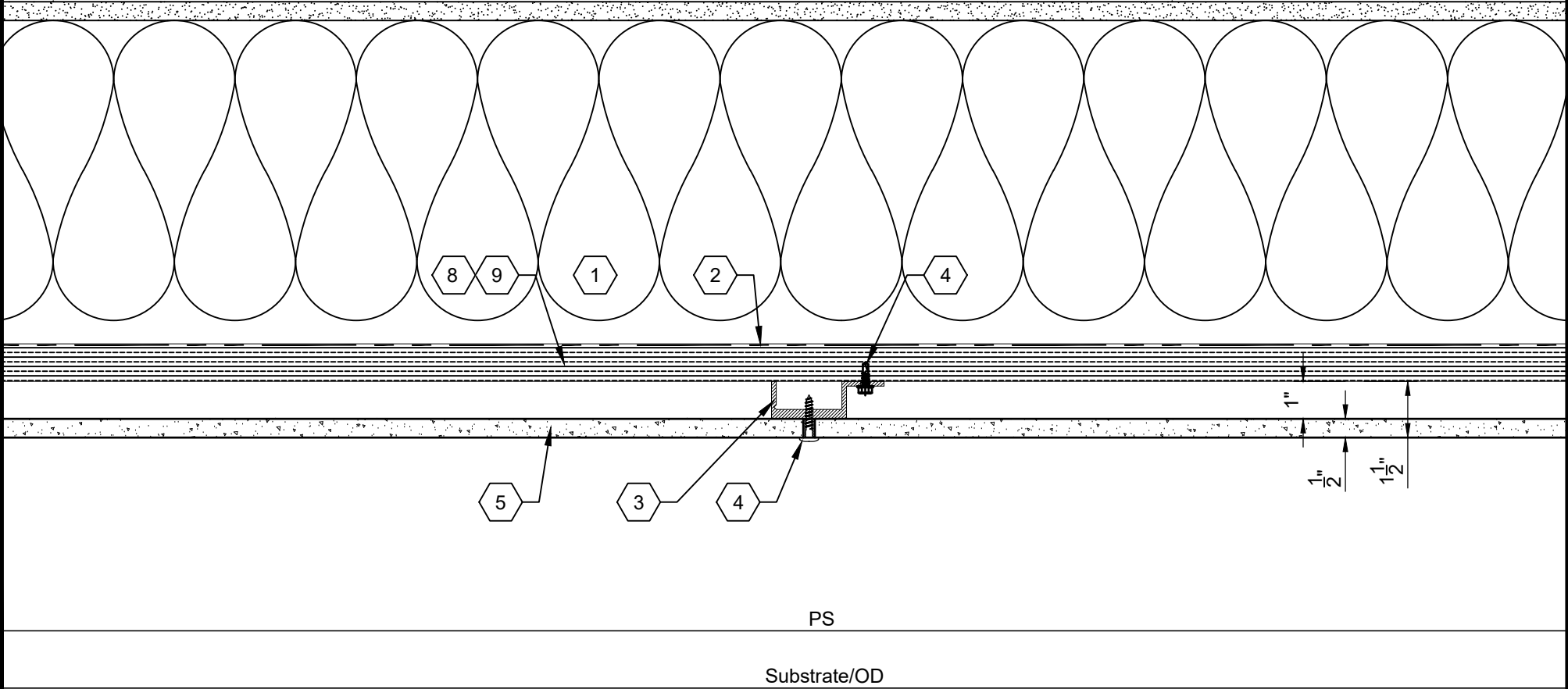
4. Fastener Per Schedule - See Sheet F01

5.  $\frac{1}{2}$ " Envel Panel, Flat Or Textured Finish
6. n/a

7. n/a

8. Insulation, Thickness & Type Per Arch.

9. Thermally Broken Insulation Girt



System:  
SYSTEM: EXPOSED FASTENER  
CLADDING: ENVEL UHPC RAINSCREEN

**ENVEL UHPC RAINSCREEN**  
Exposed Fastener

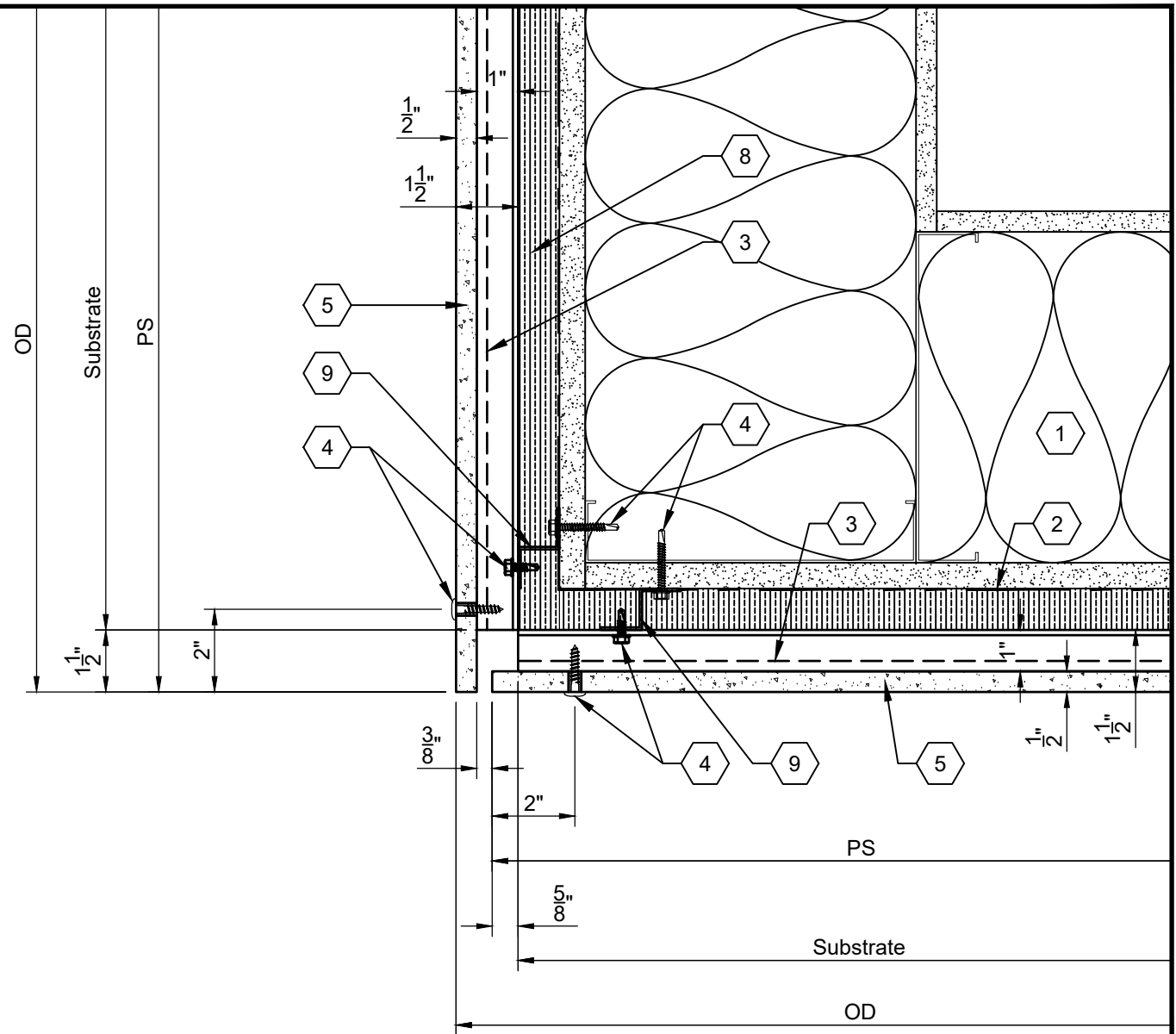
Sheet Title:	Vertical (Mid-Panel)	
Issue Date:	4/7/20	File Name: 000-D07A
Scale:	3" = 1'-0"	Sheet: D07A





## DRAWING KEYNOTES

1. Stud Framed Wall Assembly, Per Arch.
2. Weather & Air Barrier, Per Arch.
3. J-Channel
4. Fastener Per Schedule - See Sheet F01
5.  $\frac{1}{2}$ " Envel Panel, Flat Or Textured Finish
6. n/a
7. n/a
8. Insulation, Thickness & Type Per Arch.
9. Thermally Broken Insulation Girt



System:

SYSTEM: EXPOSED FASTENER  
CLADDING: ENVEL UHPC RAINSCREEN

## ENVEL UHPC RAINSCREEN

Exposed Fastener

Sheet Title:	Soffit Return	
Issue Date:	4/7/20	File Name: 000-D08
Scale:	3" = 1'-0"	Sheet: D08



<http://www.envelfacade.com>

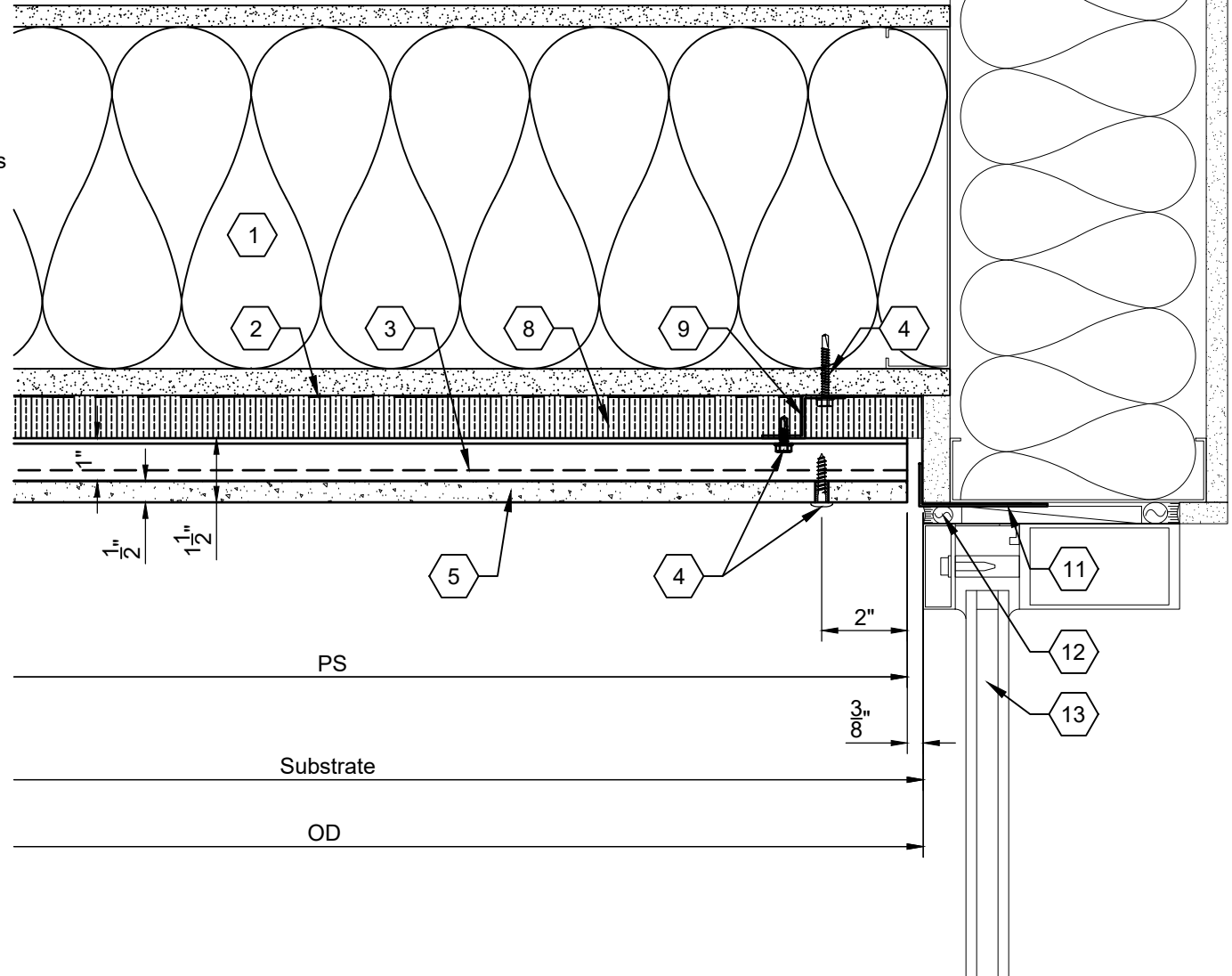
[sales@envelfacade.com](mailto:sales@envelfacade.com)





## DRAWING KEYNOTES

1. Stud Framed Wall Assembly, Per Arch.
2. Weather & Air Barrier, Per Arch.
3. J-Channel
4. Fastener Per Schedule - See Sheet F01
5.  $\frac{1}{2}$ " Envel Panel, Flat Or Textured Finish
6. n/a
7. n/a
8. Insulation, Thickness & Type Per Arch.
9. Thermally Broken Insulation Girt
10. n/a
11. 1"x3"x.063 Angle, Continuous, By Others
12. Sealant & Backer Rod, By Others
13. Glazing System, By Others



System:

SYSTEM: EXPOSED FASTENER  
CLADDING: ENVEL UHPC RAINSCREEN

**ENVEL UHPC RAINSCREEN**  
Exposed Fastener

Sheet Title: **Soffit Return To Glazing Head**

Issue Date: **4/7/20**

File Name: **000-D09**

Scale: **3" = 1'-0"**

Sheet: **D09**



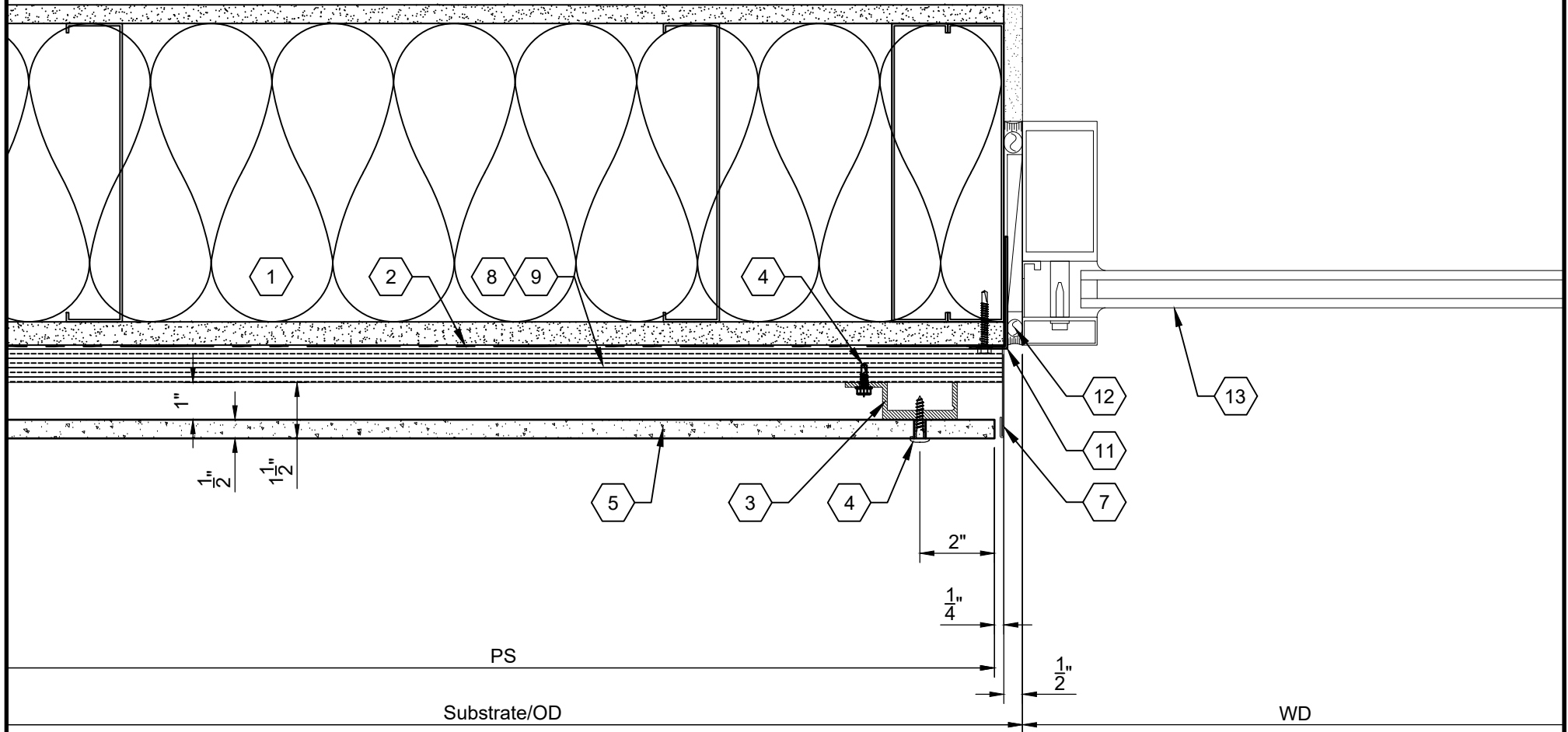
<http://www.envelfacade.com>

[sales@envelfacade.com](mailto:sales@envelfacade.com)



## DRAWING KEYNOTES

1. Stud Framed Wall Assembly, Per Arch.
2. Weather & Air Barrier, Per Arch.
3. J-Channel
4. Fastener Per Schedule - See Sheet F01
5.  $\frac{1}{2}$ " Envel Panel, Flat Or Textured Finish
6. n/a
7. Sheet Metal Trim, By Others
8. Insulation, Thickness & Type Per Arch.
9. Thermally Broken Insulation Girt
10. n/a
11. 1"x3"x.063 Angle, Continuous, By Others
12. Sealant & Backer Rod, By Others
13. Glazing System, By Others



System:

SYSTEM: EXPOSED FASTENER  
CLADDING: ENVEL UHPC RAINSCREEN

## ENVEL UHPC RAINSCREEN

Exposed Fastener

Sheet Title:	Typical Glazing Jamb	
Issue Date:	4/7/20	File Name: 000-D10
Scale:	3" = 1'-0"	Sheet: D10

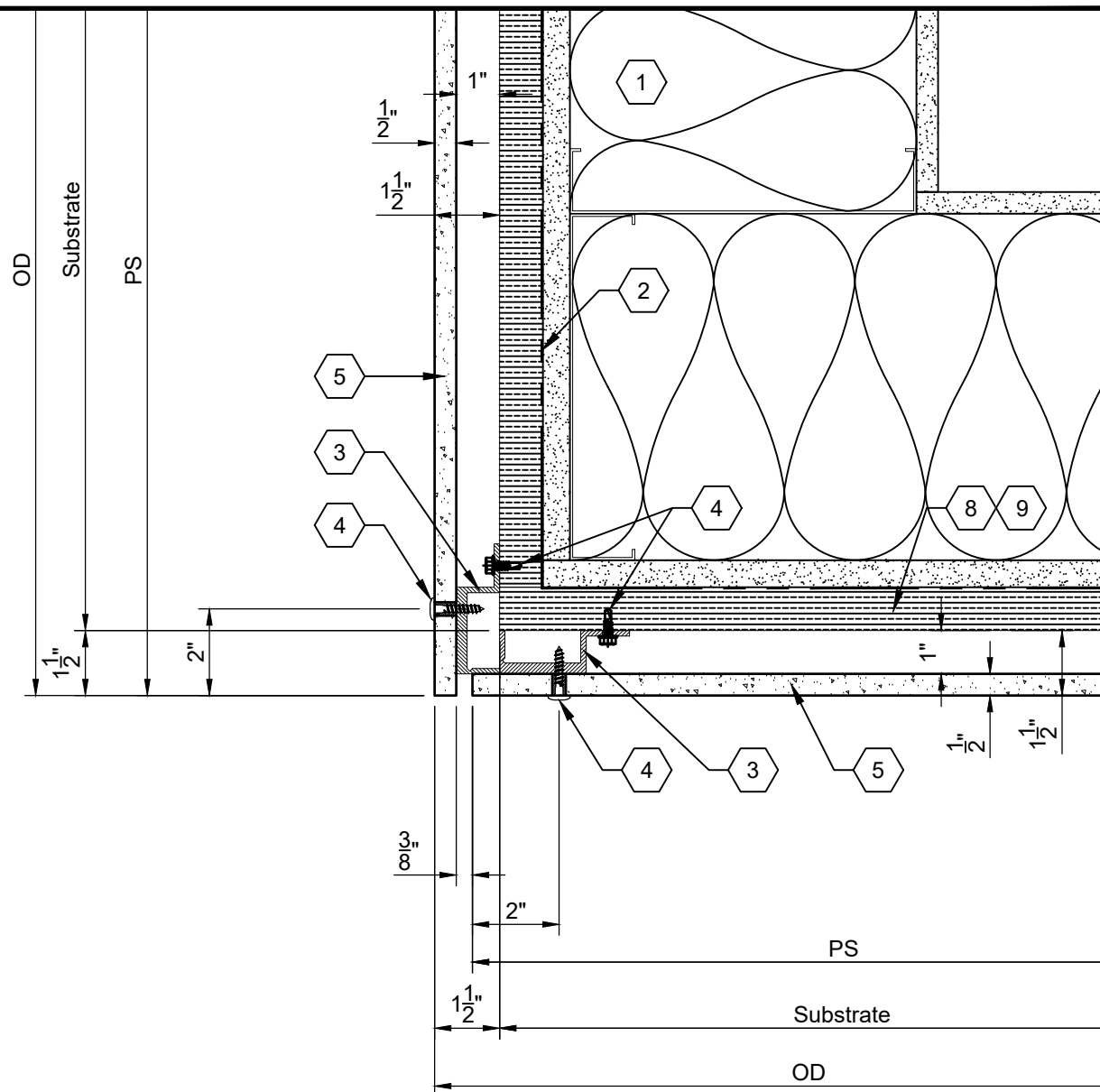


<http://www.envelfacade.com>

[sales@envelfacade.com](mailto:sales@envelfacade.com)



1. Stud Framed Wall Assembly, Per Arch.
2. Weather & Air Barrier, Per Arch.
3. J-Channel
4. Fastener Per Schedule - See Sheet F01
5.  $\frac{1}{2}$ " Envel Panel, Flat Or Textured Finish
6. n/a
7. n/a
8. Insulation, Thickness & Type Per Arch.
9. Thermally Broken Insulation Girt



SYSTEM: EXPOSED FASTENER  
CLADDING: ENVEL UHPC RAINSCREEN

## ENVEL UHPC RAINSCREEN

### Exposed Fastener

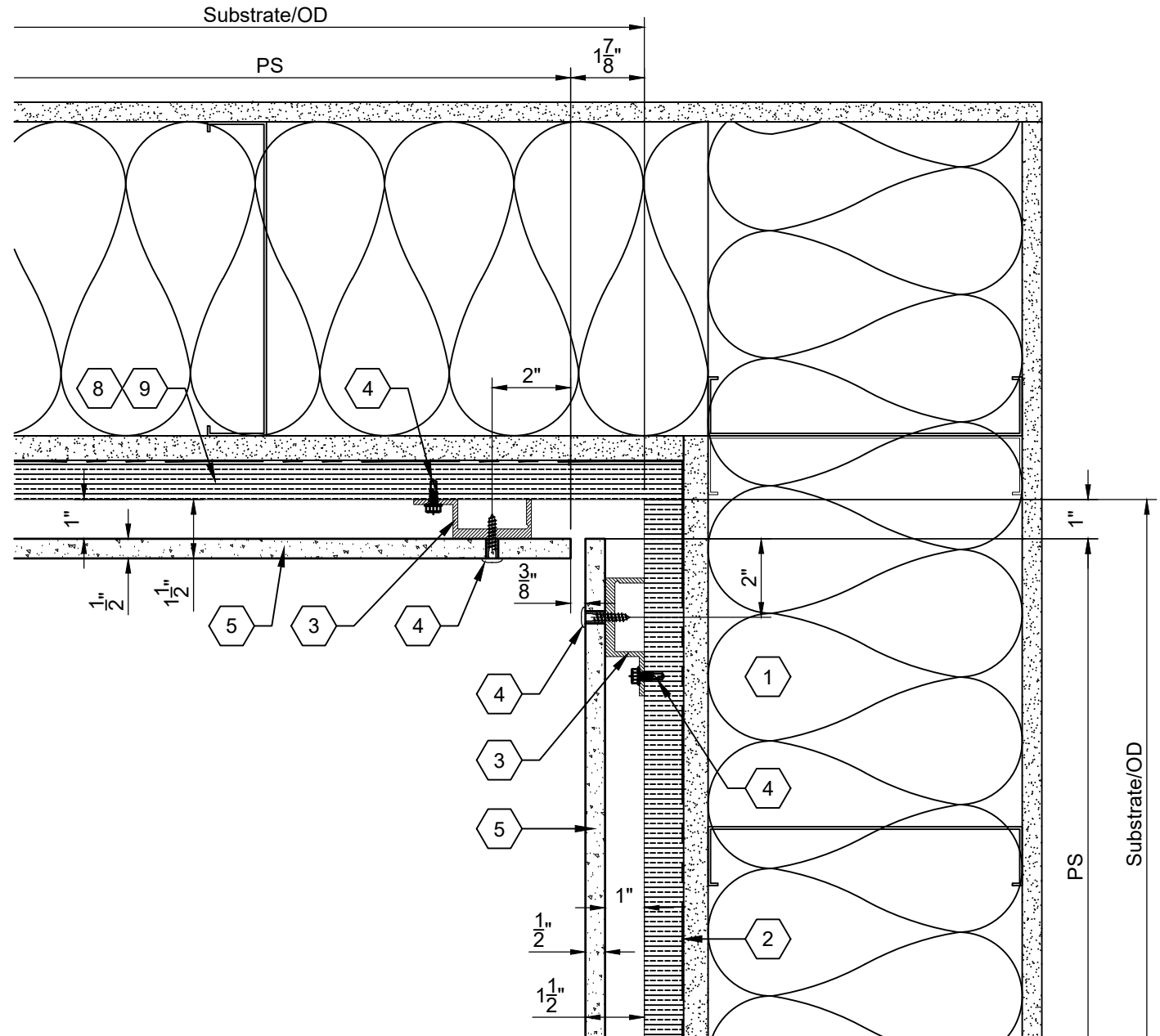
Sheet: **D11**

[sales@envelfacade.com](mailto:sales@envelfacade.com)



## DRAWING KEYNOTES

1. Stud Framed Wall Assembly, Per Arch.
2. Weather & Air Barrier, Per Arch.
3. J-Channel
4. Fastener Per Schedule - See Sheet F01
5.  $\frac{1}{2}$ " Envel Panel, Flat Or Textured Finish
6. n/a
7. n/a
8. Insulation, Thickness & Type Per Arch.
9. Thermally Broken Insulation Girt



System:

SYSTEM: EXPOSED FASTENER  
CLADDING: ENVEL UHPC RAINSCREEN

## ENVEL UHPC RAINSCREEN

Exposed Fastener

Sheet Title:	Inside Corner - Plan View	
Issue Date:	4/7/20	File Name: 000-D12
Scale:	3" = 1'-0"	Sheet: D12



<http://www.envelfacade.com>

[sales@envelfacade.com](mailto:sales@envelfacade.com)